

PROJECT FOCUS

FINDLATER'S CORNER



An iconic part of London Bridge and the capital's history. One of the oldest and most significant historic sites in Southwark, sitting just opposite the southern end of the medieval London Bridge and Southwark Cathedral.

PROJECT FOCUS

Findlater's Corner: Restoring the historic arches at London Bridge

Findlater's Corner is one of the oldest, most significant sites in Southwark, located opposite the southern end of the Roman and Medieval London Bridge.

The Findlater's Corner railway arches and viaduct were created in 1863 when the Southeastern Railway extended their lines into Cannon Street and Charing Cross Stations.

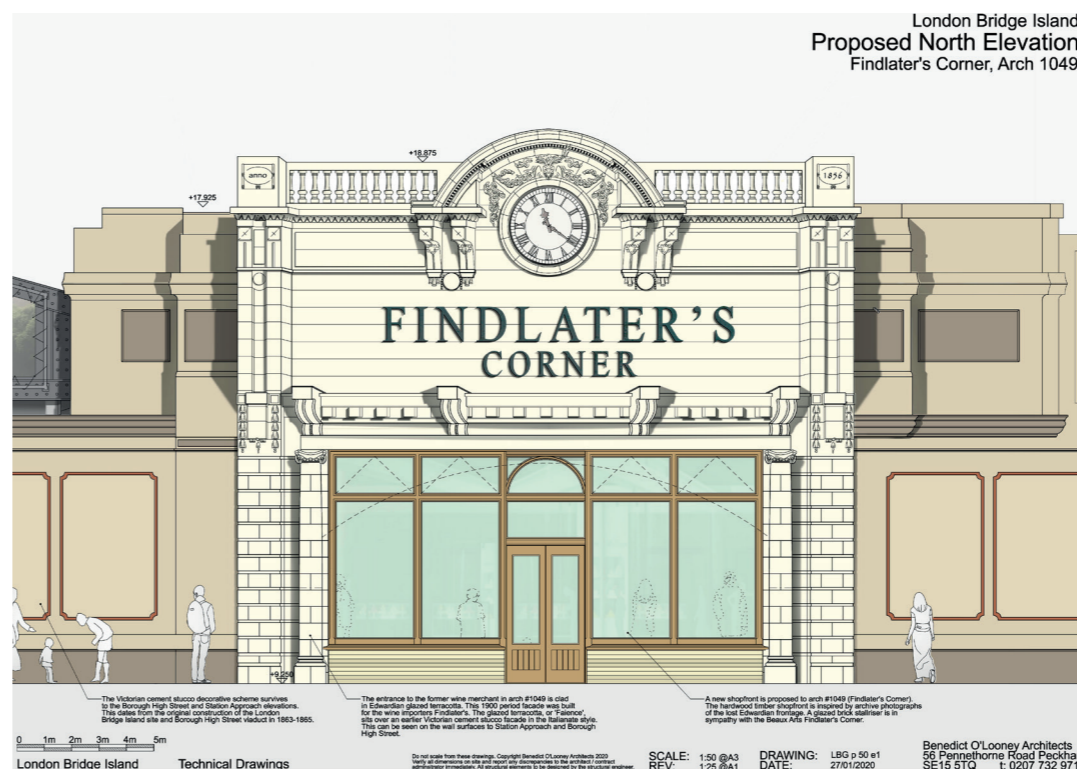
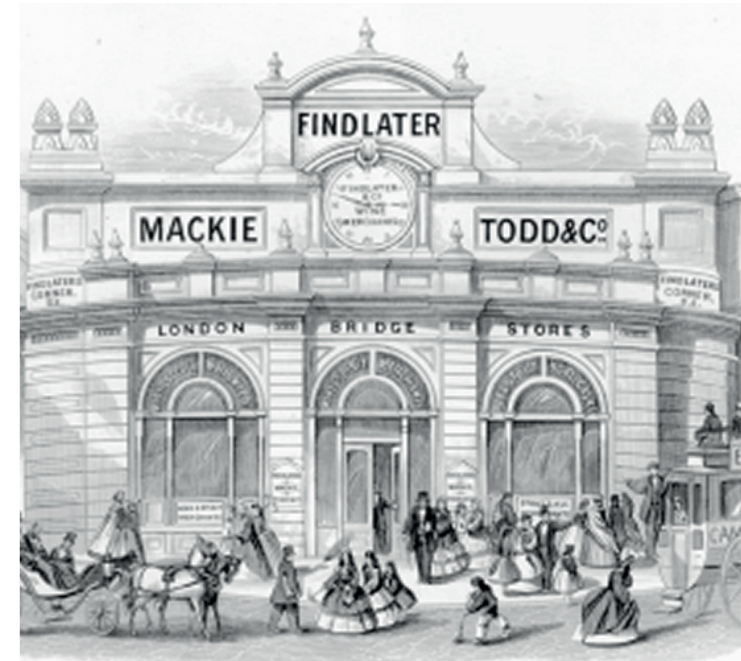
Findlater, Mackie and Todd were Scottish wine merchants who created a popular shop in these arches when they were first built. With their bold, eye-catching shopfront seen from across London Bridge, this place came to be known over the generations as 'Findlater's Corner'.

Frankham Consultancy Group were appointed by Arch Co to undertake multi-disciplinary design services to restore and reopen five of the railway arches at the London Bridge Island site, of which Findlater's Corner is the most prominent landmark.

The London Bridge Island site is located adjacent to London Bridge Station and Borough Market and is ideally situated with close links to London's top tourist attractions. Findlater's Corner, in particular, is a historic and prominent corner with a decorative clock and faience tiles that faces London Bridge.

At Findlater's Corner, we will be carrying out a full refurbishment of all ground and basement areas, suitable for retail occupier fit out. The external refurbishment of the North Elevation has also been commissioned to provide restoration of the Faience shop front surround and adjacent rendered panels. A number of heritage groups have also joined to support this landmark restoration project, these include the Heritage of London Trust, The Railway Heritage Trust, and Southwark Council's Cleaner, Greener, Safer fund.

A full review process has been undertaken of the surveys and these have been used to develop and influence the design. The proposal will create a more flexible and sustainable commercial retail environment, ranging from planning classes A1 -A5, that is attractive to tenants as well as local residents, businesses and commuters.



London Bridge Island
Proposed North Elevation
Findlater's Corner, Arch 1049

All photos
© Benedict O'Looney Architects



Project Team

Owner - **The Arch Company**

Architect - **Benedict O'Looney Architects**

Building Surveyors, Structural Engineers, Quantity Surveyors,
Principal Designer - **Frankham Consultancy Group**

Findlater's Corner is an important example of London's Edwardian Baroque Revival.

This vigorous classical architecture was often used for shops, public buildings and monuments in Britain around the year 1900.

Findlater's eye-catching ceramic facade terminates the view south along London Bridge and is seen by thousands of commuters every day.