

WINTER 2015

LIFE IS THE NEWSLETTER OF
FRANKHAM CONSULTANCY GROUP

14

4

MECHANICAL & ELECTRICAL



5

BRIGHTON CYCLE HUB



6

WATERMANS GARDENS



8

HEALTHCARE SUCCESS

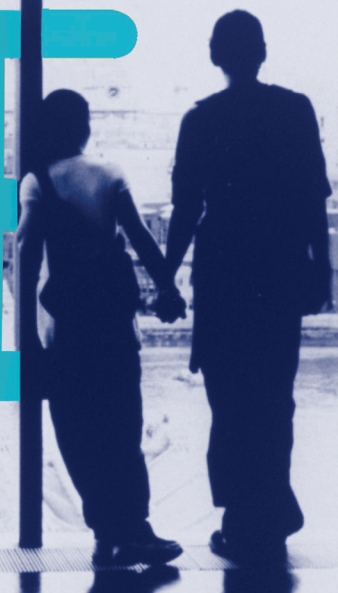


9

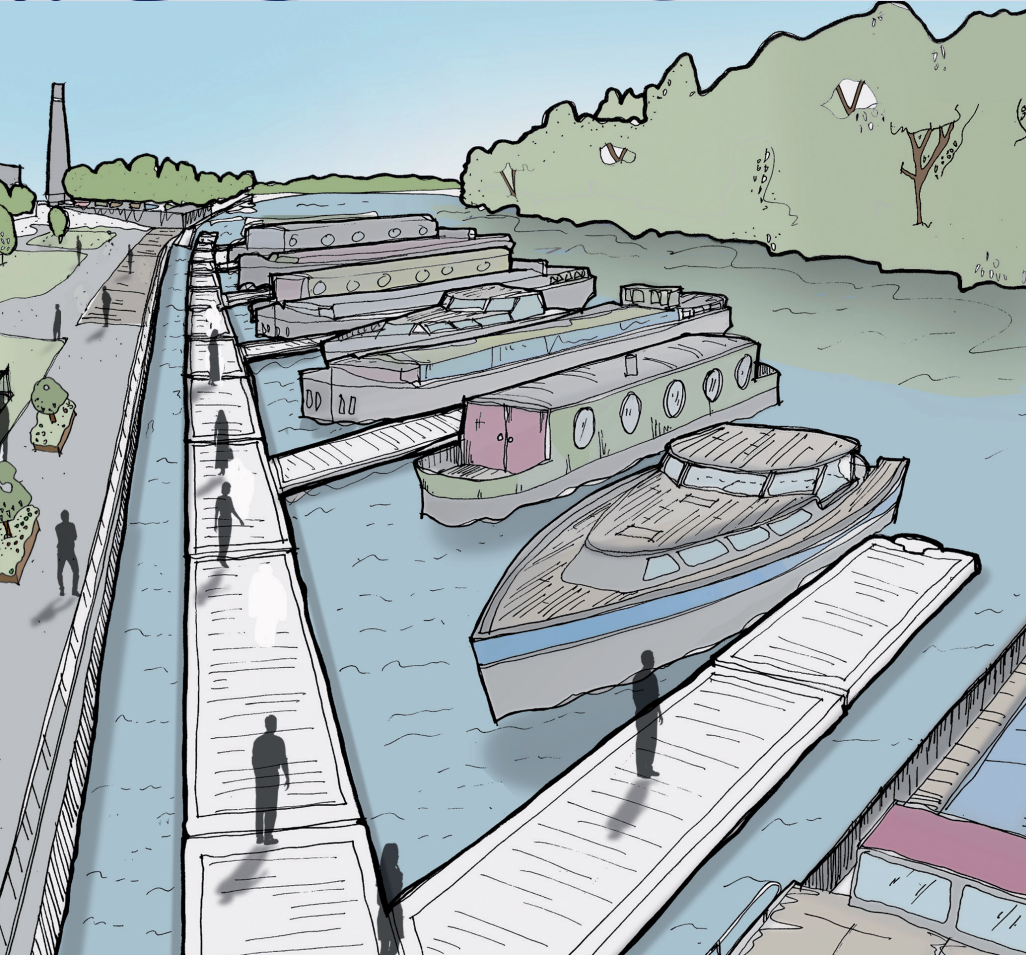
EDUCATION DESIGN VALUE



LIFE



A WINDOW TO THE WORLD OF FRANKHAM



**HEALTH SECTOR
FOCUS**

**CHANGES AT TEAM
FRANKHAM**

**CHARITABLE TRUST
REACHES
£1 MILLION PLUS**



FRANKHAM



FRANKHAM

LIFE

Steve Frankham

Welcome to our latest edition of LIFE.

As we come to the close of another year we look back at some of the changes at Frankham Group. One of the most important goals at Frankham is to train and bring on the next generation of professionals; the construction industry still needs to invest more to ensure we have the skills for the future.

To this end, earlier in the year we relaunched our Graduates programme and completely revamped our careers and opportunities initiatives which includes a route for Tradesman to progress to Technical or a professional status. We have also taken advantage of the Government apprentice scheme to employ new starters.

We have also continued our programme of BIM training. Frankham continue to strive for BIM excellence across all sectors and divisions of our business. We have gained numerous BIM specialist staff qualifications, with 11 of our senior staff achieving BIM Accredited Professional status and five of these staff have extended their experience level to Qualified BIM Project Information Managers (PIM). We are also in the process of moving our entire business towards BIM Level 2 Certification, in conjunction with the BRE, which we are aiming to achieve prior to the end of the financial year.

During 2015 we have had many successes in both new frameworks and projects and Richard Chitty is pleased to review these opposite. We are also pleased to announce various new roles within the Group; Jason Waplington is now our MD of multi disciplined design and will be focused on continuing our commitment to BIM and ensuring our first class service when delivering multi disciplined projects.

James Clements has also taken over running the Group's Mechanical and Engineering division, responsible for leading the delivery of our Building Services team across all offices. James has been steadily progressing within the Company for nine years now, rising from a Graduate to an Associate. This has allowed him to gain experience and knowledge of the day to day running of the department at every level, making him the perfect candidate to lead the department in its future successes.

We are pleased to also announce the promotion of Nurgul Barut to Group Chief Accountant. This new position comes with Associate Director status and is in

recognition of the additional responsibilities that have followed the growth of the Frankham Group of Companies. Nurgul will be responsible for the day-to-day running of the Finance and Accounts team. Nurgul has been with us for over eight years, starting as a Junior Accountant and achieving her Level 3 ACCA qualification with the support of Frankham.

As well as all the positive changes going forward, we unfortunately have said goodbye to our Regional Director John Higgins. John has been with the company for over fifteen years and has now chosen to take on some new challenges. We all wish John every success and thank him for his time at Frankham.

Many of you will be aware we take our Corporate Social Responsibility seriously as a company. We have for many years been focused on putting something back into the community and this year our charitable trust hit a milestone having raised in excess of a million pounds. It is a very proud moment for us all but not possible without the wonderful support we have had from our clients, supply chain and staff. We are truly grateful and rest assured every penny goes to worthy causes. We can also confirm that we have ordered our tenth bus.

On that note can I wish you, your family and loved ones a happy holiday and a fantastic New Year. We do not send Christmas cards, but instead make a donation to the Dennis Wise and Frankham Group Charitable Trust.



Steve Frankham
Chairman

“
WE HAVE FOR
MANY YEARS
BEEN FOCUSED
ON PUTTING
SOMETHING
BACK INTO THE
COMMUNITY AND
THIS YEAR OUR
CHARITABLE
TRUST RAISED
IN EXCESS OF A
MILLION POUNDS.”

New Business, Projects and Frameworks – Richard Chitty Group Managing Director

Across the Group, we have continued to be selected on to new framework agreements and a wide variety of new type projects and commissions across all sectors and disciplines.

We have noticed a change in the market place in this financial year. Up to the end of the last financial year, it seemed that the market was in danger of overheating in certain areas. Since April, this has noticeably changed. We have seen projects and commissions delayed, cancelled or put on hold particularly in certain parts of the public sector. This appears to be traced back to the election with the new Government reviewing and looking for savings in public sector spending.

There have still been plenty of opportunities, as you will see below, for us to continue to expand and diversify our workload. The below is in no way an exhaustive list but provides a selection and shows that we are succeeding in our aim of maintaining a well balanced portfolio of projects spread across key sectors and public and private clients.

Frankham continues to focus on its quality in delivery and Steve has highlighted some of the changes we have made in management and our investment in training.

I would like to thank all our clients and staff for aiding us in achieving our success this year and wish you all well for 2016.



FRANKHAM

LIFE

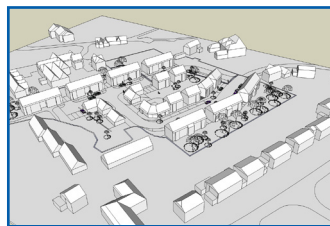
Housing

New Frameworks

London & Quadrant – multi
Swan Housing – multi
ASRA Housing – various
Estuary Housing – various

Major Projects

Wealden DC – Multiple sites
Estuary Housing – Fire Risk Assessments
Lambeth Living – Various packages
Homes for Haringey – 3 phase Decent Homes
Gateway Housing, Co-op Homes – Surveys
Southern Housing – 4 Decent Homes
Brentwood BC – Various new build projects
Reading – Hanover House



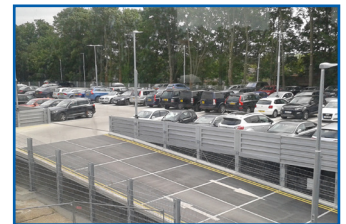
Transport

New Frameworks

Network Rail Commercial Property Various disciplines.
TFL Commercial Services and property consultancy, various disciplines.

Major Projects

GTR – Numerous Station
Gatelines
Southwest Trains Decked Car
Parks, multiple stations
London Underground ticket
offices
Network Rail – Brunel Arcade
South West Trains –
Wimbledon train care depot extension
Network Rail – SIN143 surveys to station assets



Local Authority, Civic



New Frameworks

Medway Council –
Multi-discipline
LB Ealing – asbestos surveying
LB Camden – fire risk services

Major Projects

LB Haringey Marsh Lane depot
LB Haringey Libraries

LB Hounslow – Western International Business Park
Thurrock – Tilbury Riverside Business Park expansion

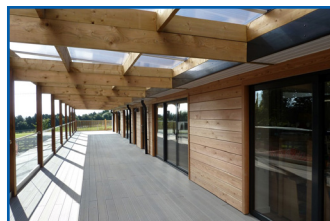
Education

New Frameworks

LB Hillingdon – Schools
condition CDM

Major Projects

Bounds Green
School, Haringey
Havering College
Southern Road Primary Newham Council
Notting Hill & Ealing High School. Girls Day School Trust
St Peter's London Docks PS, LDBS
Modular Buildings, LB Croydon
Oxford Brooks University – Various buildings
West Berks – Various projects



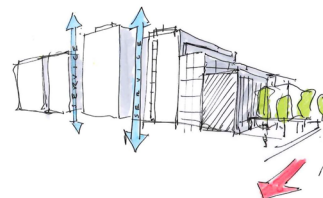
Health

New Frameworks

North West London Hospitals – multi
Frimley Park Hospital
St George's Healthcare – Arch

Major Projects

Royal Free Fire Compliance
LNWH – Modular block, 63 bed
Imperial Hammersmith
site – DCP
St Georges GICU £20m
Pembury Hospital
new ward block



St Georges – Endoscopy unit
East Kent – Pathology works
BSUH – TNBU & SCBU & Neurosurgery
LNWH – MRI & Mortuary
Stoke Mandeville – New ward
Barking – Breast care theatres

Other

Royal Military Academy – Replacement windows
Defence Academy – Cormorant building
FCO – British Embassy schemes – Paris, Prague



WINTER 2015

FRANKHAM

LIFE

MECHANICAL AND ELECTRICAL SERVICES



Frankham's well established Mechanical & Electrical team provides design and project management on projects from feasibility to inception.

The team believes it is vital that full consideration is given to not only how the services are

to be integrated into the building's overall design and meeting the capital cost target, but also how those choices made at design stage will affect the maintenance and use of the building over its lifetime. Our continued involvement through our long term Client relationships places us in a prime position to be able to help make these key decisions.

As well as performing the traditional role of designing heating, ventilation, air conditioning, lighting and electrical distribution systems, we can offer a range of integrated services to extract maximum value from your budget.

We can utilise our Building Physics capabilities, and in collaboration with the Architect, analyse and optimise passive design features to reduce the energy demand of the building. By doing this, we reduce the need to use complex building services, simplify future maintenance requirements, and improve the ease of use for the occupants.

Through research and implementation of new technologies we can realise additional streams of funding and greater levels of efficiency for our Clients by selecting the right technologies for their needs. Our understanding of Planning & Building Regulations will steer them through the process whilst reducing expensive bolt on solutions.

Investing in new technologies ourselves has allowed us to place BIM Level 2 accredited professionals at the core of our team, helping to demystify the subject for our Clients and the design teams we work with.

To Contact James e: james.clements@frankham.com
t: **020 8309 7777**



FRMS SERVICES - HEALTH FOCUS



Frankham Risk Management Services has been working in conjunction with NHS trusts on compliance based projects for many years – helping to ensure they are compliant with the plethora of legislation, regulations and guidance that impact on them.

As a measure of FRMS's ability and experience in providing compliance services, we are pleased to announce our recent tender success for Central and North West London NHS Foundation Trust and also on the appointment to a recent framework for NHS Shared Business services.

For Central and North West London, we are appointed to support the Trust's Estates team in maintaining a fully compliant estate and the services include the following:

- Risk Assessments and other related Inspections and Audits to the Trust Estate.

- Training to Trust staff and, where appropriate, sub-contractors (approximately 7,000 individuals). Fire safety training will cover generic mandatory training for the entire trust in addition to more specialist training to key staff members with specific fire safety responsibilities.
- Fire Safety Advice and Management Reporting.

Working for NHS trusts often means unique fire safety issues and working within Mental Healthcare, particularly as evacuation strategies need to function in an efficient and safe manner. By providing Consultants with extensive healthcare experience, FRMS is able to provide a very tailored consultancy and training service to ensure a safe Estate and environment to both staff and patients.

To Contact John e: john.powell@frankham-rms.com
t: **020 8309 7777**





FRANKHAM

LIFE

Brighton Cycle Hub

Southern Railway's new cycle hub at Brighton Railway Station was officially opened by Rail Minister Baroness Kramer on 26th March 2015.

The project team was congratulated for the delivery of this project, which has been in the pipeline for some time and brings an exciting facility to Brighton that fully encompasses the cycle and keeping fit philosophy from home to work.

The £1.5million scheme situated at the rear of the Grade 2* listed station provides 500 secure cycle spaces with the added convenience of a cycle repair/maintenance workshop and coffee shop on the ground floor with changing rooms, showers, toilet facilities and a changing places facility on the first floor, together with a spinning bike and office space for rent. The mixed use of the building ensures that the facility is vibrant and key social meeting place and community facility at different part of the day.



The scheme has been funded by the Department of Transport, Brighton and Hove City Council and Network Rail.

Frankham provided full multi discipline design services and the building was designed taking into account the topography of the site and the adjacency to the existing station.

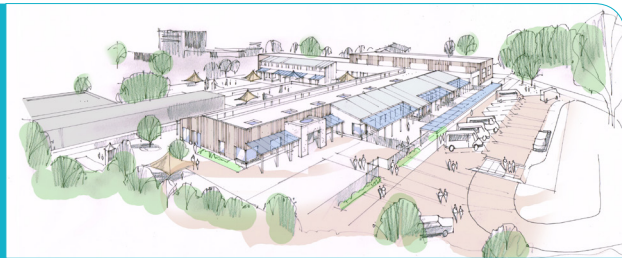
Detailed consultations took place with the planning, highways and conservation teams to establish a design principle which harmonised with the historic vocabulary in a modern building.

Abbey Court SEN Schools

The design team has been working with Medway Council on an £11 million project for a new Abbey Court SEN School, amalgamating the Nursery and Primary provision with the Secondary and Post 16 provision onto the one site.

The school design has been developed in a tight time frame with less than six months to get from initial interview and introduction to a Planning Application. Nevertheless, it was still important to involve as many stakeholders as possible with the teaching staff, therapists, pupils, parents, governors, user groups and the local community.

The project vision was to create a welcoming setting for the mix of SEN needs splitting the school requirements between Nursery, Reception, and through each Keystage up to Post 16.



With Abbey Court, the most important ingredient from the pupils' and teachers' view point is that the resultant building is practical and functional. It is critical to create a school which is flexible and able to respond to future demands. The balance of pupils being admitted to the School, evolving teaching methods and staff expertise will all evoke change. The designs will be generous enough to accommodate evolution and be able to incorporate a wide variety of activities to ensure its long life.

Northwick Park Hospital

Frankham was commissioned earlier this year to undertake Technical Advisor, Employer's Agent and Project Management duties on behalf of London North West Healthcare NHS Trust for a new four storey, 63 bed Treatment and Assessment Unit. This is linked to the existing Emergency Department and creates two floors of acute ward accommodation with a floor designated for infectious diseases and the ground floor accommodating a patient waiting/discharge area.

The new £10.5 million building is being constructed using a steel podium deck and



modular construction with external rain screen cladding, and brise-soleil to the southern facade. The building envelope is designed to have a contrasting vocabulary to the adjacent buildings.



FRANKHAM

LIFE

WINTER 2015



frankhamprojects

Development Consultancy
and Management

Jack's Story

Jack joined Frankham Projects Limited as a Land Buyer in February 2015. We catch up with him below...

How did your education help prepare you for this job?

Various aspects of my degree such as Accounting and Economics have proven very useful to my work however I wouldn't say that my particular degree (International Business with French) has been hugely relevant to my working life so far but that's not to say that the whole experience hasn't stood me in good stead.

What have you learned from mistakes on the job?

I've learnt that it's important to ask questions if you're not sure about something, even if you think you sound daft asking them.

Give an example of where you have applied your technical knowledge in a practical way.

Technical knowledge of planning and development is fundamental to our success as a business and by using this knowledge, I look to add value to the residential schemes we come across whenever possible.

Pick two celebrities to be your parents and explain your choice.

Jack Nicholson as my dad. Questionable role model but I'm confident there would never be a dull moment. The Queen as mum. Although quite old, the birthday and Christmas presents must be pretty decent.

Which superhuman power do you wish you had?

Having the power to stop time a la Bernard's Watch.

What attracted you to join us?

The chance to join a young and growing team in an industry which is constantly evolving was a great opportunity for me. Being handed the responsibility of largely managing my own time and projects also greatly appealed.

What are your goals for the future?

I would like to live abroad for a few years at some point in the future and I would also like to build my own house.

What is your greatest strength?

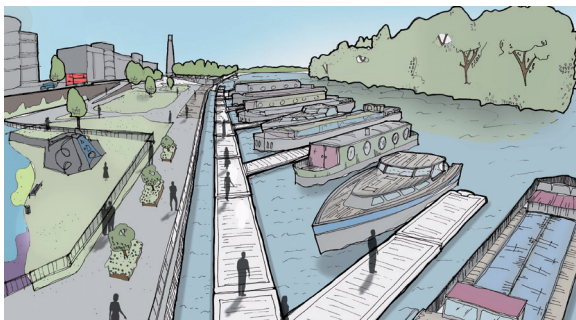
I think my greatest strength is being able to get on and communicate with the majority of people I meet which is useful in property given that you meet a wide array of individuals.

What song best describes your work ethic?

Lionel Ritchie – All night long.

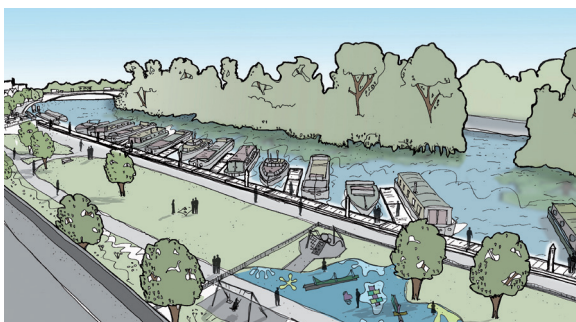
Watermans Gardens

Frankham Projects was appointed by the London Borough of Hounslow as the Development Agent on an area of foreshore immediately adjacent to Watermans Gardens, which is a linear area of park between a small channel from the main body of the River Thames and Brentford High Street.



The area is currently occupied by a number of unlicensed vessels moored to objects in the River owned by the Council. The existing vessels were required to be removed by the Port of London Authority and a business case was examined to ascertain whether this could be done on a cost neutral basis to the Council whilst also funding regeneration improvements to the park area over a four year phased masterplan.

Frankham Projects was advised on the viability of the development through the production of an outline business case for Cabinet, and development management and design services through the project culminating in a planning submission in April 2015.



The planning application involved the coordination of a full multi-disciplinary design team in addition to the services of our in-house maritime engineering division and was formulated on a strict development programme to ensure the client's aspiration for planning submission was achieved.

The project was the first of its kind undertaken by the Council and, as such, in addition to the standard processes, this complex project involved the coordination of a number of strands of information including legal issues, navigational rights of way, mooring management agreements, appropriation of open space and consultation with the GLA.



FRANKHAM

LIFE



Tim Peters

Principal Consultant Head of Asbestos

1. Describe the company in three words?

Professional
Listeners
Facilitators

2. In your opinion, what constitutes success?

Delivering the correct product, at the correct value, to the satisfaction of all parties involved

3. Give me an overview of the most interesting client project that you have worked on?

Having previously worked with DTZ (Tie Leung), I have inspected most of the central London government buildings, including Admiralty House and Arch, The Cabinet Office (Including Cabinet Office Briefing Room A (COBRA)), The Palace of Westminster, and 10 Downing Street.

4. What is the most difficult decision you have ever made?

At 22 years old, moving from Brighton to London was a very difficult decision to make, as my life and family were there. But the best things have happened since I took the decision to move.

5. What would you like to see being done in schools to promote Compliance Management as a career?

The discipline of Health and Safety Compliance is often viewed as killjoy (especially in the media) but it quite literally saves lives every day. It should be promoted as an exciting professional discipline, especially as there is such a variety of roles.

6. How do you see the next 3 to 5 years in the company?

The general standard of surveys, especially for main contractors, is poor, mainly because of the low unit rates, and those willing to work for peanuts. We are frequently in the position where we are resurveying poor surveys, and in the long run, is costing the clients more than if they paid a marginally higher price in the first place. In the future, we need to get clients to realise that paying slightly more up front, gets you a much better product, that will not need redoing. The key is to be there as an advisor at the procurement stage, so that the process is driven by compliance managers, not accountants. Therefore, if FRMS can correctly position themselves as advisors, then the standard of work within the industry will be improved. We will of course also need to be there to pick up the pieces for those who don't listen to common sense.

7. What are you most of?

I'm most proud of my family, especially my wife.

8. If you could be someone else for the day, who would it be and why?

It sounds cliché, but I would probably like to be myself, without the insecurities and uncertainties, that hold most of us back. I believe that to have an insight into what could really be achieved would be life changing.

9. What do you like most about working for the company?

The fact that I seem supported at every stage.

10. What attracted you to join us?

Within the industry, FRMS has always been known as a compliance consultancy, rather than a surveying company.

I have been part of a number of projects where FRMS has played the role of a professional advisor.

I then had the good fortune to be offered a position, and have felt grateful ever since.

11. What would you do if you won the lottery?

I would provide for my family and friends, then give the rest to charity. I would love to say "start a charity", but I believe that many charities already do such a fantastic job; much better than I ever could!

12. What's the best advice you have ever been given?

Probably either of the following:

"Love all. Trust few. Do wrong to no one" – Shakespeare

'You can't cross the sea merely by standing and staring at the water.' – Rabindranath Tagore.

13. If you were marooned on a desert island, what three things would you have with you and why?

1. A Bible – For companionship
2. Hunting knife – Hunting for food and for making shelters etc.
3. Flint Tool – For lighting fires

14. What has been your biggest achievement to date?

Providing a safe and loving environment for my children, where they are positively encouraged to be themselves.

15. What is your pet hate?

Drivers who aren't aware of their surroundings. They a danger to themselves and others.

Tim works for Frankham Risk Management Services. Please feel free to contact him on e:tim.peters@frankham-rms.com
t:**020 8309 7777** with any asbestos risk related project needs.



FRANKHAM

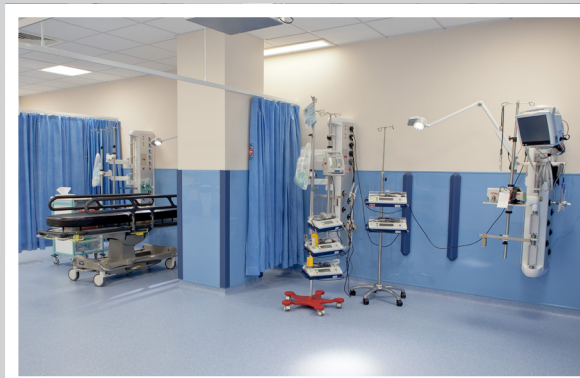
LIFE

WINTER 2015

Healthcare Successes Continue at Frankham

Further to the very encouraging announcement in late 2014 that Frankham Consultancy Group was appointed to the NHS London Procurement Partnership (www.lpp.nhs.uk), there has been a strong growth in its Healthcare Design Team. Many acute, mental health, community and primary care organisations have now benefitted from this comprehensive Multi-Discipline Design Framework and the outlook for the Healthcare Industry at Frankham looks very positive.

In recent months many Frankham Healthcare projects have been successfully completed across the London and South East region including several fast track bed capacity projects that have responded to challenges that some NHS Trusts face



with increasing their bed numbers.

Notable projects include the 26 bed expansion and conversion of administrative accommodation at Stoke Mandeville Hospital. The proposed works were within an existing building at first floor level, an area that was occupied by Trust offices and the IT Department. An added complication was the presence of Asbestos for which a full R&D survey was carried out once the decant had been undertaken. The project was completed on time and on budget.

After this successful completion, Buckinghamshire Healthcare NHS Trust said,

"As the main protagonists on this project, can I thank you all on behalf of the Trust and the Board for the excellent job that you have done in concluding a challenging project. Please thank your team members also for their diligence and hard work".

As part of an estate-wide bed expansion strategy that we assisted St. George's University Hospitals NHS Foundation Trust with, the Trust has recently completed an eight bed ward expansion. The project was successfully completed within a fast-track programme and provided essential bed capacity for the Trust. Similar such projects are planned throughout 2015 with Frankham



acting as Lead Consultant to ensure an effective construction and commissioning programme.

Our growing team of Healthcare design experts are involved in many NHS projects. The scale, cost and complexity of our projects vary and include Hybrid and General Theatre, Inpatient Ward, Laboratory, Mortuary and Intensive Care Unit design, to name a few. Our expanding portfolio of Healthcare projects is encouraging and we look forward to working with many NHS Trusts throughout 2015 and beyond.

NHS Framework Director, Allen Calcutt added,

"We are proud of the progress Frankham Consultancy Group has made over the last few years within the Healthcare industry, and we now believe that we are seen as a leading design consultancy for the NHS and CCG's. Much of our work is through recommendation and repeat business, but we are also very pleased with the prospect of being listed on major NHS Design Frameworks such as the Shared Business Services and London Procurement Partnership Frameworks".



Please feel free to contact
Allen Calcutt on 01444 444 900
with your Healthcare project needs.



FRANKHAM

LIFE

Education Design Value

Love it or hate it, the Building Schools for the Future Programme created a lot of discussion on schools design, many examples of innovative concept and thinking but unfortunately a perception that architects and contractors were wasteful with public money. Clients have now been reined in by Government during a time of austerity and the thought is that they are looking to Architects to curtail their innovation in line with the reduced resources.

This is an unfortunate perception of how designers approached BSF and certainly not an experience shared by the Frankham design team. Two years ago we delivered a new £30m replacement Secondary School for Langley Park School for Boys in London Borough of Bromley, a BSF One School Pathfinder project and this was a very successful scheme delivered on time and within the budget. It was greatly enhanced by a Section 106 contribution to include a community use, 650 seat theatre and concert hall.



So in the current climate we as architects and designers have had to embrace the reality of this funding regime. Frankham has always had the best interests of the aspirations of our clients at heart, we have consulted, collaborated and communicated openly with schools and their LA proactively and openly, challenged and informed their briefing processes and offered creative solutions. This has enabled us to build strong and successful relationships with all of our Local Authority, Diocese and contractor clients.

Through the funding policy directed by the Government we have worked closely within our design teams and with our contracting partners to make the construction and maintenance of schools more effective and to give greater value to the restricted capital budget. There is a perception that this has constrained architectural flair and creativity but the Frankham teams have embraced this challenge and our holistic multi-disciplinary approach regards design in a more innovative way. We don't only focus on obvious

architecture but also rigorously assess whole life costs and benefits, find best value in capital spending through operational and functional efficiency and remove as much waste in both



procurement and construction as possible.

This approach has been highly valued by our local authority and contractor clients, for example in the provision of two new-build primary schools for London Borough of Croydon which were designed and delivered by Frankham utilising the Governments Baseline Design guidance and the Scape Framework. Schools are increasingly being procured through contractors rather than consultants through the PSBP and the EFA. This is a challenge to the architects' traditional role as design leader, impacting upon the delivery team dynamics and how projects are managed. However, our clients have acknowledged that the role Frankham's architects play in the team is critically important especially because of their knowledge and understanding of the link between the built environment and educational outcomes. Comfortingly, school clients believe that well designed schools can inspire children and young people and motivate the teachers working within them.

With our long history of schools design and delivery, Frankham is able to share learning from our past experience that helps fine tune and improve both existing and new projects. Our clients have confidence in our professional advice and we in turn are able to inform and educate them to contribute proactively to the successful implementation of this knowledge.

To Contact Trevor
e: trevor.halls@frankham.com
t: 020 8309 7777





FRANKHAM

LIFE

WINTER 2015

Dennis Wise & Frankham Group Charitable Trust Reaches £1 million raised

It's been another busy year for the Trust, firstly, with the Million Pound Masquerade Ball held on the 21st March at the Savoy Hotel, London. The evening was hosted by Jonny Gould with the Drifters frontliner Ray Lewis headlining the evening's entertainment.

The target for the evening was a big one... to reach £1m raised since inception. Following an amazing meal, massive car raffle and silent auction and auctions, Steve and Dennis gladly announced that the £1m target had been exceeded with the funds raised now standing at around £1,030,000! The evening ended in full swing with DJs Speedy and SammyR spinning the decks.

Next, it was onto the ever popular Fundraising Lunch held at Oakley House, Bromley on the 6th November.

With over 350 people in attendance it was a busy day and everyone was entertained by two great comedians, Colin Cole and Adam Bloom. During the lunch the Trust was presented with a cheque for £13,912.50 from The Pink Tie Club, which was money they had raised at their Annual Golf Day. This, together with the money raised from the silent/main auction, (a further £57,887.42) gave us a grand total of £71,799.92 which will certainly help towards reaching our next £1m!

The Trustees would like to thank everyone for supporting these events and look forward to seeing you all at the next one.

Date for your Diaries:

The next Ball will be held on the 7th May 2016 at a new venue, The Grange Tower Hotel, London. Please contact Pat Saville or Becky Bosman for further details.



Frankham proudly presents cheque for £550 to the British Legion

Steve Frankham had the honour of presenting a cheque for £550 to the President of the local Royal British Legion.

The money was raised from Poppy Appeal donations at our Dennis Wise & Frankham Group Charitable Trust Fundraising Lunch on Friday 6th November 2015.

Many thanks to all who contributed.



New Braille Technology at Frankham



Darren Platt has been Frankham's receptionist for 15 years. Thanks to new technology, Darren can now send and receive emails using the latest Braille equipment, which Frankham has

sponsored along with Access to Work.

Darren says:

"Since I had the equipment installed, it has certainly made my work in the reception at Frankham a lot easier and quicker. For example, rather than having to take a message from a caller then dictate it to a colleague on reception for them to email on my behalf, I can just simply email it straight away which saves time.

The ability to read and write both incoming and outgoing messages created in braille is a very liberating experience that puts me on a more equal playing field."



FRANKHAM

LIFE

Bus Donations

This year the Trust presented Buses No.006, No.007 and No.008.

Bus No.006 was donated to The Parents Consortium, a local charity in the Dartford, Gravesham and Swanley area. They provide services and care to disabled children, young people and their families including: support, advice, leisure activities, after school clubs, social and holiday clubs, overnight breaks and training. They required a wheel chair accessible bus to accommodate three wheel chairs.



Katrina Adams, Operations Director at The Parents Consortium said "This is a massive donation to us and we are really excited to receive this today. We can now take lots of children out on day trips and pick them all up from school and home. It will save time and money and the most important thing is that the children love it. The mini bus has a football theme design on the side and does not look like a disability bus. Both Steve and Dennis said they were proud to support such a worthy charity."

Bus No.007 was presented to special needs school Shaftesbury High School in Harrow. Coincidentally, the Headmaster of the school was Dennis' Headmaster back in the day, albeit not at Shaftesbury High School. They required a 16 passenger bus. Shaftesbury is a school for children with learning, emotional, behavioural, autistic, communication, medical, physical, sensory and social needs.

Bus No.009 has been donated to Parkwood Hall School steel band who regularly perform at the Trust's events. The official presentation has yet to take place as the children are designing the artwork for the mini bus and trailer.

Going forward, the Trust has two buses on order ready to be donated to The Jigsaw School and another to be decided.

If you know of a school that would benefit from a new minibus, please contact pat.saville@frankham.com

Qualifications

The SMT are pleased to announce the promotion of **Nurgul Barut** to Group Chief Accountant with immediate effect. Nurgul will be responsible for the day-to-day running of the Finance/Accounts team and will report directly to John Gardner.

It gives the SMT great pleasure to announce that **James Clements** has been promoted to Associate Director Building Services with responsibility for leading the delivery of our Building Services team across all our offices.

Following months of hard studying, congratulations to **Nick Surtees** who has successfully completed his Part 3 studies at Brighton University, achieving the highest score within his group, and following his registration with the ARB will now become a registered Architect.

Jamie York has successfully qualified as a Chartered Building Surveyor. This is top news for our London Office and huge congratulations go to Jamie for his hard work and dedication.

The CDM & Health & Safety Team continue it's drive to develop the Health & Safety side of our business and are pleased to announce that **Phil Peters** and **Alan Swailes** have been elected as members of the Institute of Industrial Accident Investigators.

As the name suggests this places them and the team in a position to actively assist Clients in investigating and advising on accident prevention as well as help them through the challenges that follow industrial and workplace accidents – Well done to all.

Well done to **Daniel Lucas** who has now completed all of his exams and qualified as an ACCA Qualified Accountant.

Congratulations to **Mirander Laver** upon receiving a BSc First Class Honours degree in Building Surveying and on recently receiving her RICS student membership.

Congratulations also go to **Richard Percival** who has recently qualified as a Chartered Engineer and been made a Member of the Institute of Civil Engineers.

Frankham Consultancy Group is very pleased to announce that one of our Engineers, **Richard Sellwood**, has started to study part-time for his MSc in Civil Engineering at University College London.



**Sidcup (Head Office)**

Irene House
Five Arches Business Park
Maidstone Road
Sidcup, Kent
DA14 5AE
T 020 8309 7777

Oxford

Wootton Business Park
Wootton
Abingdon
Oxfordshire
OX13 6FD
T 01865 322 500

Haywards Heath

21 Perrymount Road
Haywards Heath
RH16 3TP
T 01444 444 900

Central London

Third Floor, Baird House
15-17 St Cross Street
London, EC1N 8UW
T 020 7651 0790

enquire@frankham.com
www.frankham.com



Accreditation News

D4* Achilles Audit Success

We are delighted to have passed our first new format audit with Achilles with 4 stars, the highest star rating that you can achieve under the new scheme. This audit reviews our business management procedures which are required to work within the Rail industry and is testament to our excellent Health, Safety and Environmental policies.

BSI Accreditation

We are pleased to have been recertified for ISO9001 (QMS) and ISO14001 (Enviro) following a two day assessment by BSI. QMS obtained a clean sheet with non observations or minor non conformities.

Legionella Control Association

Frankham Risk Management Services is pleased to announce their membership of the Legionella Control Association.

Frankham's policies in relation to water hygiene were comprehensively reviewed by the LCA. Membership is seen across the industry as increasingly important in demonstrating high standards of service.

Share your ideas

Frankham is fully committed to customer service and we continue to regularly monitor feedback from our clients through Frankham Direct.

frankham.direct@frankham.com

This email address allows you to contact Frankham's Executive Board directly, and encourages positive feedback and suggestions for future improvements.

"Feedback is the food of champions"



FRANKHAM