

WINTER 2013

LIFE IS THE NEWSLETTER OF
FRANKHAM CONSULTANCY GROUP

12

3

KEY PROJECTS



6

FULL GROUP SERVICES



8

TECHNOLOGY



9

CORPORATE SOCIAL RESPONSIBILITY



10

COMPANY NEWS



LIFE

A WINDOW TO THE WORLD OF FRANKHAM



**“A SUPERB OUTCOME:
A BUILDING THAT
MEET THE NEEDS
OF OUR COMPLEX
CHILDREN YET IS
AESTHETICALLY
STUNNING.”**

THE FRANKHAM
DESIGNED SEN
“VILLAGE SCHOOL”
OPENS!



FRANKHAM



FRANKHAM

LIFE

STEVE FRANKHAM

As we near the end of 2013 we can look back on a year of significant change. At last the construction industry is showing signs of improvement and Government policies have put confidence back into the housing market. As the number of new house starts increase, this sector of our industry will bring benefits to the whole economy right down to those that provide all the items that are purchased when setting up new homes.

Frankham has seen a dramatic increase in orders and opportunities, in fact, we now seem to have an estimating division growing alongside our successful bid team. In many cases, we have been successful securing new frameworks but the hard work then starts with mini tenders and the preparation of quality plans, even for the smallest of fees. So it would appear that there are many signs of recovery for the construction industry but it's not a time to be complacent; we must stay focused as we look to substantially grow our future order book.

If the signs are right and life is improving, we will now start to suffer the knock on effects of recession. Many companies have down sized, looked to make efficiencies, reduced investment in training, lost Senior Professionals to early retirement, the list goes on. So it's a time of rebuilding our businesses and to encourage our next generation of young professionals and build confidence for our loyal and committed staff.

We still have a long way to go and we know that our clients and competitors are also aware of the resource shortage of quality people. We think a collaborative approach towards identifying individuals in communities who can be taken on as trainees and apprentices must be investigated by consultants, contractors and clients. We should work together to do our utmost to encourage the next wave of Architects, Engineers and Surveyors to join our industry.

We know that the Government is continually encouraging businesses to expand and invest in our economy but we as a company still have major concerns and believe that there are some key issues to be addressed:

- Streamline procurement procedures to reduce costs and time input by professionals.
- Streamline the planning process in order to release more projects quicker.
- Government to seriously consider initiatives to encourage the next

generation of young professionals to fill the skills shortage that is otherwise inevitable.

- The banking world needs to regain trust and support business of all sizes, we all need honest help and investment.

As confidence and our order book grows, we have been able to increase our investment in our greatest asset, our people. We have employed more Graduates and we continue to provide work experience placements for students from local schools. We are also providing more Leadership and Management courses for our managers of the future. None of this is possible if margins are driven down, we need to be profitable to invest in the future.

It was also pleasing that when the Building Magazine's Top 250 Consultants survey 2013 was published Frankham had maintained its position at 59th in what has been a demanding and challenging market. Importantly, since these returns were made we have increased our staff levels by 15%. We are also delighted that seven months into the financial year, our order book target stands at 95% for the 12 month period. Notably, we are also pleased that our architecture team increased its standing, moving up to 66th from 77th.

We are also delighted to announce that due to growth of our London team, we will be moving to larger offices and developing our Multi Discipline services for our commercial clients. Our newly formed measurement company, Lane & Frankham Ltd, will also be based in the London office. Andy Lane has done a sterling job providing the new Area Measurement and Report services to our commercial clients.

Finally, I would like to thank my Group Managing Director, Richard Chitty, Financial Director, John Gardner and PA Pat Saville, all of whom have been with me for twenty years; they have been totally committed and their support and loyalty invaluable.

As always, can I wish you and your families a Happy Holiday and a fantastic New Year. Here's to continued growth in our industry.



Steve Frankham
Chairman

“IT'S A TIME OF
REBUILDING OUR
BUSINESSES
AND TO
ENCOURAGE
OUR NEXT
GENERATION
OF YOUNG
PROFESSIONALS”

HEALTH

2013 has seen some significant changes in the NHS, with the loss of Primary Care Trusts and the introduction of Clinical Commissioning Groups taking up many of their functions, also the introduction of NHS Property Ltd and its responsibility for part of the NHS Estate.

Frankham's Healthcare Team has been busy keeping abreast of the changes and has maintained an excellent order book with clients including St Georges Hospital NHS Trust, Maidstone & Tunbridge Wells NHS Trust and Brighton & Sussex University Hospitals NHS Trust. Our inclusion on the NHS Shared Business Services Framework for Architectural & Quantity Surveying services was also cause for celebration amongst the team, with several opportunities arising out of this framework.



Some of this year's projects include:

- Delivery of new twin modular theatres
- £5.5 million refurbishment works and new build for a General Intensive Care Unit
- £500,000 remodelling of Haematology and Oncology Outpatients department
- Ward re-modelling and re-configuration for Dementia & Maternity services
- Five year business critical estate review for Kingston Hospital
- Strategic review of core service support facilities at Maidstone Hospital
- Appraisal for new Pathology Unit
- Appraisal for new Birthing & Maternity Services Unit
- New £4 million Hybrid theatre & TSSU remodelling
- Strategic review of Pathology services for Kent Pathology Partnership
- Various schemes including the remodelling of pathology, maternity wet rooms, ward refurbishments and ambulance drop off

The health care team continues to expand following recent successes and developments in this sector and is looking forward to the opportunities and challenges of 2014.



FRANKHAM

LIFE

FRANKHAM RMS - RISK & COMPLIANCE OVERVIEW

In May this year, Frankham Risk Management Services (Frankham RMS) signed a three year National Framework Agreement for the provision of compliance and other related Services to VINCI Facilities, as a nominated consultant of choice. VINCI Facilities established the Framework to focus on targeted expertise and to excel in the provision of service requirements for their customer base. By prioritising current and prospective UK wide clients, the objective of this framework is to facilitate supply chain partnerships and mutually share in the risk, reward, good practice and recognition.

VINCI Facilities has approved several specialist providers for varying compliance related services; however, the unique difference with the Frankham agreement is

that it gives VINCI Facilities access to a broad range of other related services, providing a truly integrated multi-disciplinary capability.

Other successful compliance contracts for 2013 include frameworks with:

- Gallions Housing Association
- Hanover Housing Association
- Slough Borough Council
- Greater Anglia
- Thames Valley Housing
- Croydon Churches Housing Association
- Transport for London
- London Borough of Camden

Frankham RMS continues to supply organisations with a better understanding of integrated compliance, and assists them to achieve more effective management of risk and compliance.

HOUSING

Following on from our successes with several Housing Provider frameworks, all disciplines have been busy delivering new build and asset management projects across a range of stock types.

The architectural team is involved in a wide range of projects assisting clients in site identification and acquisition, feasibility studies, planning, building control and working drawing packages both in the UK and Europe.

Our building surveyors have successfully completed work on two Decent Homes packages

for Lambeth Living and are completing the tender analysis for a third.

Work is due to start on a programme of surveys and reports to provide improved fire resistance to approximately 750 street properties for the London Borough of Camden.

We are also due to start on site with four large Decent Homes packages for Homes for Haringey, with a number of smaller projects to follow.

We are acting as Employer's Agent for the London Borough of Havering and East Thames, Estuary, Swan, Sentinel, and Metropolitan Housing Associations.

This success is built on our quality of service; attention to detail and our ability to deliver outstanding homes at a cost that makes projects a viable venture.





FRANKHAM

LIFE

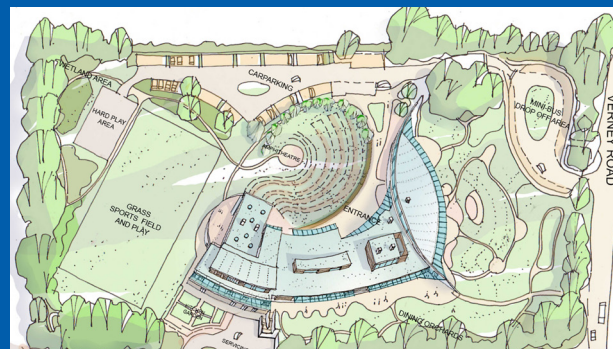
EDUCATION

Following the end of the BSF and Academies Framework programmes, education funding has changed its priorities to address demographic pressures and maintenance needs. This has allowed Frankham's Architects, Surveyors and Engineers to work closely and collaboratively with Local Authorities, who have more direct spend and control over their budgets. This has involved numerous projects, particularly in the Primary sector, to provide best value space and accommodation shortfall for an increasing school population.

We have delivered this service for many of the London Boroughs including Croydon, Hillingdon, Haringey and Brent through the London Construction Programme Consultants Services framework and in other areas through frameworks with County and District Councils in Oxfordshire, Surrey and West Berkshire.

in Special Educational Needs School design. Children and Young People need and deserve attractive and accessible school buildings and inclusive design can enable and empower those with SEN and physical disabilities to participate fully in life at school and in the wider community. With the summer completion and handover of the £30 million Village School in Brent, Frankham has led the vision and process of designing and delivering the largest and most advanced SEN school in the country and has overseen this becoming a reality. It has been welcomed as a triumph by all concerned and described as an exemplar by which all schools should be delivered.

Frankham is currently using this knowledge base on a scheme for Buckinghamshire County Council to expand a co educational day community SEN school from 120 to 148 pupils. This will underpin the School's aspirations for the future and provide an inspirational learning environment within a hub of expertise.



LIFE IN THE UNIVERSITY OF OXFORD

The Frankham Team continues to develop high profile projects for University of Oxford including a commission to provide Project Management Services on a £3 million fast track, two phase scheme to remodel the Dyson Perrins Building, on behalf of the School of Geography and the Environment.

The Dyson Perrins building is an important Grade 2 Listed building that comprises a mixture of office, administration, teaching and seminar lecture spaces for 800 students and 400 members of staff.

The scheme involved the reinvention of teaching and administration spaces. Works are being carried out to comprehensively enhance the quality of the spaces and introduce state of the art AV technology into the teaching spaces.

The works are split over two phases. Phase one was carried out June to September 2013 and handed over in October this year and phase two will be carried out over the summer of 2014. The works were procured on a two stage Design and Building Contract (JCT 2011 D&B).

The project was commissioned by the University of Oxford Estates Services and involved the management of the project in accordance with the University of Oxford 'Guide

to Capital Building Projects'. The project has allowed us to develop a valuable understanding of the relationship between the University of Oxford and the individual departments occupying the buildings. The University is represented by BESC (Buildings and Estates Sub-Committee) and the Departments occupy each building in a landlord – tenant capacity, with corresponding duties and obligations.

The two phase project is extremely demanding and challenging but the results have been well received by The University Estates Department and School of Geography.





FRANKHAM

LIFE

THE VILLAGE SCHOOL



The Village School is a Special Education Needs School for 235 pupils, aged 4-19. It is a replacement building for the London Borough of Brent and is for a wide spectrum of SEN pupils inclusive of Profound and Multiple Learning Difficulties (PMLD), Severe Learning Difficulties (SLD) and Autistic Spectrum Disorder (ASD) and highly complex pupils. The finished building is one of the largest and most advanced SEN schools in the country.

The scheme also includes the eight bedroom Ade Adepitan Short Break Centre on the same site, to provide overnight and weekend respite care for the children and parents.

People

The design team worked closely with the Borough and School throughout the consultation process and through to delivery. An extensive consultation process was undertaken across all current and expected user groups.

Results

The new buildings have provided some of the most vulnerable children and young people within the Borough with an opportunity of hope. The school provides a positive approach to schooling and respite care - something which, without the vision and determination of those involved would not have been possible. The young people now have the chance to learn everyday Independent Living skills through simple life experiences such as making a cup of tea or cook a meal, giving a real difference to their everyday lives.

Design

The design builds strongly on the concept of core teams around the pupils, focusing on their needs through a multi-disciplinary approach. The shared 'Every Child Matters' agenda and the team around the child model were at the centre of a 'Three Village' concept whereby children progress through Village 1 (2-7 years), Village 2 (7-14 years) and Village 3 (14-19 years). The new School is seen as a symbol for the London Borough of Brent's investment in Special Educational Needs. First and foremost it is a welcoming comfortable place for the children where they can feel safe within an inclusive environment, a school in which they can have a sense of pride and a Short Break centre that is fun to come to and a joy to use. The school building is outward facing to the community, inviting and open to the local neighbourhood. Engagement with the local residents is central to the ethos of the school with the cafe, pool, sports hall, external hard court, drop-in therapy, exhibitions and special events. The school's desire is to develop as a meeting

place and in turn help break down perceived barriers and gain greater acceptance and understanding of special needs within the area. The 'Village' is a place people want to come to learn, teach, share and socialise in. 'Out of hours' use is simple



and straightforward, there is an emphasis on 'Life Skills' and vocational teaching, preparing individuals for a future in the working world but ensuring those close links with ex pupils remain beyond the age of 19 and into adulthood. Ultimately, The Village is a place people want to invest time and effort in, adopting it as part of the neighbourhood and taking pride in the symbolism its buildings represent, a celebration of the school, the centre and its pupils cherished by the local community.





WINTER 2013

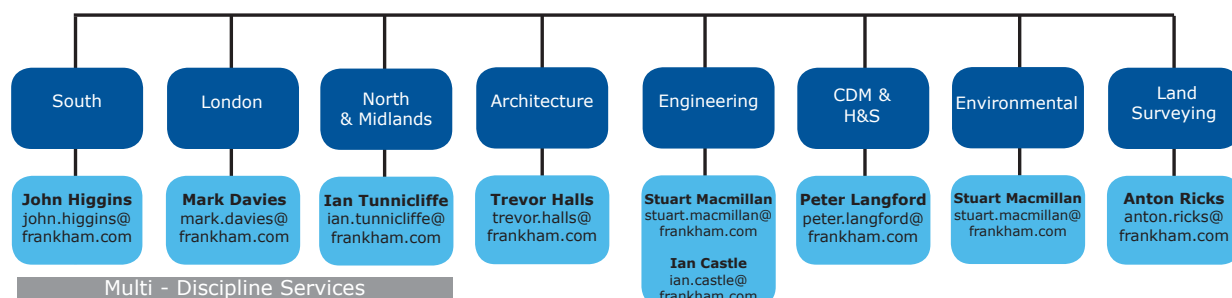
FRANKHAM

LIFE

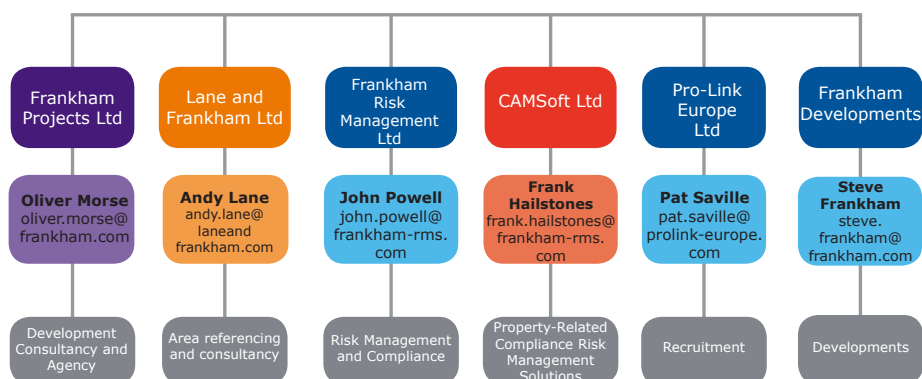
GROUP COMPANY STRUCTURE

Frankham Consultancy Group provides a full range of design and consultancy services to the built environment and a broad range of complementary specialist services on a UK basis. This year the Group has added new companies, services and office locations, here is a high level guide:

FRANKHAM CONSULTANCY GROUP



GROUP COMPANIES



LEEDS OFFICE

Frankham has opened a dedicated office to service its growing northern client base.

Based in Leeds, expansion is planned so that we will ultimately provide the same full multi-disciplinary service that we provide from our other offices.

Contact Dominic
Blackmore at Suite 136,
4100 Park Approach,
Thorpe Park, Leeds, LS15
8GB.

T: 0113 3970 332

AREA REFERENCING SPECIALISTS

Lane & Frankham



After a great start to the new area referencing venture set up in January 2013, projects have continued to be secured throughout the summer and turnover had already exceeded its annual target in the first nine months of trading. However the most pleasing aspect is the excellent working relationships we have established with developers that include Land Securities, Canary Wharf, Derwent London & Westfield and fund managers Hermes, M & G Real Estate, F & C Investments as well as the major multi-national agents, CBRE, Jones Lang LaSalle, Savills and Cushman & Wakefield.

It seems that after five years of subdued activity in the UK Commercial Property sector we are now seeing an increased demand for warranted Area Referencing reports to support the increasing investment activity in London and also the Regions. We are also noting a requirement for more traditional surveys to support the delayed development schemes or those brought forward due to the increased confidence in the sector.

If your project, be it an existing office, new development, shopping centre, business or industrial park, High Street retail or mixed use scheme requires accurate, independent and timely measurement in accordance with the latest RICS codes of Measuring Practice then contact Andy Lane through our dedicated website - www.laneandfrankham.com



BURGESS AUTISTIC TRUST

Burgess Autistic Trust provides a wide range of services supporting children, young people and adults with differing needs within the Autistic Spectrum. Currently working from a converted terraced house in Bromley Common, the Trust has outgrown its current premises as the team has begun to serve other South East London Boroughs as well as Bromley. They were keenly looking for alternative accommodation that would provide scope not only to continue to grow their organisation's offering but also allowing them to provide this from a HUB facility that would match the organisation's aspirations.

Frankham Projects was appointed to manage the project from identifying a location and agreeing terms, to overseeing the design process and submission of a planning application to vary the existing building. We also developed the programme for the phased relocation of the

existing Trust Headquarters. A new purpose designed facility will be delivered for February 2014 providing teaching and training facilities, a multi-purpose hall, Community Cafe and administration facilities for the Trust in a landmark building in the Beckenham, Clock House area of the Borough.

We were also able to help relocate one of the Trust's outreach centres at short notice when, following a lengthy negotiation period, a proposed lease on a new building fell through at the last minute. Frankham Projects was able to immediately identify a vacant D1 premises in a great location that would meet the requirement to serve users in the Lewisham area. Contracts were exchanged within two weeks and the Trust were able to move in shortly after. *For more information contact Oliver Morse, Director Frankham Projects oliver.morse@frankham.com.*



FRANKHAM DEVELOPMENTS

Frankham Developments is a niche developer of high quality, bespoke, private residential developments across South London and Kent. Completion is nearing on a ten unit scheme in a prime location directly opposite Riddlesdown Station and backing onto Purley Downs Golf Club and work is about to begin on sites in Greenwich and Medway providing a further 25 units.

Frankham Developments is actively seeking new opportunities and would like to hear from you should you have a property which you think may be of interest. Please contact Oliver Morse on 020 8309 7777.



TOPOGRAPHICAL SURVEYING - EASTLEIGH DEPOT

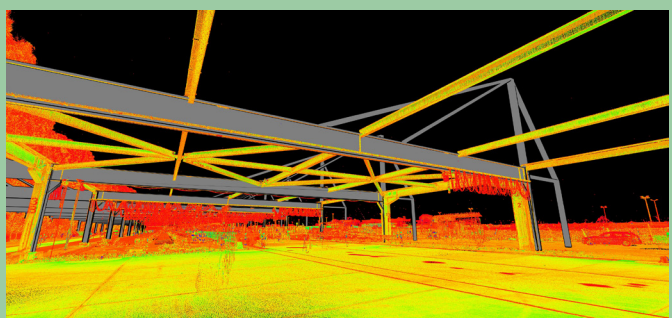


Eastleigh Long Weld Depot is set in a siding and is dedicated to the welding of rail sections to form maximum lengths of rail up to 216m long. Rail sections are delivered to the depot by rail and off loaded using mechanical crane lifting systems supported by portal frames along the length of the delivering train.

Frankham Consultancy Engineers, Architects and Land Surveyors were commissioned by Network Rail to devise and visualise different designs for extending this facility. The first phase was to carry out a topographical survey of the depot and adjacent sidings. As the project was only at Feasibility stage, the works needed to be completed quickly and to a cost effective budget, so the Land Survey Division used their team of HDS laser scanners that enabled the collection of large amounts of data that was processed

and interrogated as required, without interrupting the operations of this busy working facility.

Once the data had been collated and processed into a 3D model, Frankham Engineers, Architects and Land Surveyors were able to incorporate design options into fly-through visualisation and still presentations allowing Project Leaders and Planners the opportunity to see an accurate representation of each option, thus enhancing their ability to define the pros and cons of each design. Contact anton.ricks@frankham.com.

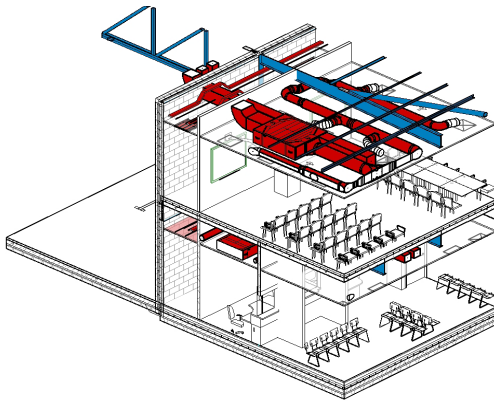




WINTER 2013

FRANKHAM

LIFE



BIM

Frankham BIM capability is going from strength to strength with an improved staff skill base resulting from ongoing training and new projects that implement Level 2 BIM protocols.

Frankham is involved in various construction sectors in providing multi-disciplinary, co-ordinated information modelling including major projects in defence, education and police.

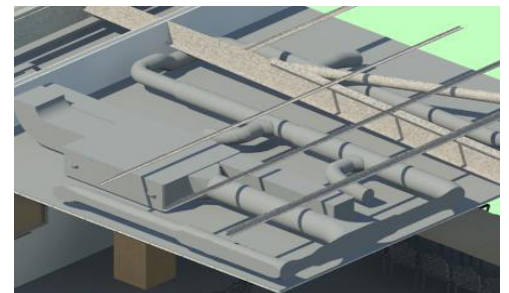
Frankham is working collaboratively through the iESE framework to provide an industrial unit for a

Government body in Central London. This BIM Level 2 compliant project complies with the Government guidelines for this type of scheme along with the stringent design guides provided by the client. With full co-ordination between in-house Architectural, Structural and Mechanical & Electrical team members, supported by the Group BIM Manager and Project Manager, this project is shaping the protocols to be used by Frankham on future schemes.

Within the education sector, Frankham Architects and Structures have been working closely together to provide a co-ordinated building design for an SEN School. Frankham is working with a separate client appointed M&E consultant

on this scheme and utilising the 3D model helps the teams to clearly co-ordinate through the detailed design and construction phases. With a complicated design this project has proven to be a very useful learning tool to the teams involved and will influence procedures and projects of this type in the future.

Frankham is investigating working practices with other external consultants for BIM projects and is exploring the protocols and plans that need to be put in place to allow other consultants to seamlessly work with each of our in-house teams, together or separately.



For further information please contact **Richard White**, BSc Hons ACIT, Group BIM Manager richard.white@frankham.com or **01685 322500**

FRANKHAM SOCIAL

You can now keep up to date with the latest news via our social media pages.



Like us on Facebook: Frankham Consultancy Group



Follow us on Twitter: @FrankhamGroup

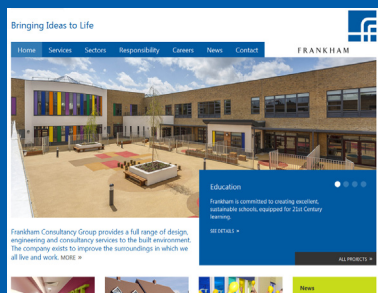


Follow us on LinkedIn: Frankham Consultancy Group



Richard is an Autodesk Revit Certified Accredited Professional.

FRANKHAM WEBSITES



Frankham Group now has three complementary websites that feature a wealth of company information for clients, collaborative partners and prospective employees of the business. The sites are designed to provide a

simple user journey through our broad range of services with easily located, informative information.

The frankham.com website helps users navigate by providing a high level grouping of services and more in-depth information on each service and sector.

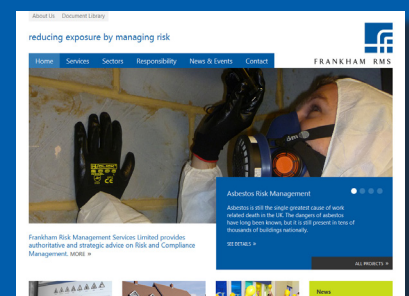
Frankham Risk Management Services (Frankham RMS) has re-designed and re-launched its website www.frankham-rms.com with the view to it becoming the first-choice destination site for all compliance and risk related services.

Following feedback from clients, suppliers and staff, Frankham RMS re-designed the website to better reflect

the needs of its target audience. The updated site has kept the same professional look and personal feel that Frankham is known for, whilst adding value with new and improved features and information.

The Pro-Link Europe website ensures that services are fully accessible to clients and candidates.

Pro-Link Europe understands the expectations of clients and candidates and detailed information on their services can be found at www.prolink-europe.com.



DENNIS WISE & FRANKHAM GROUP CHARITABLE TRUST

Dennis Wise in the Community once again proved that even in the current economic climate, supporting charities and raising money for children is never far from people's hearts.

On Saturday 18th May we held our 2013 Dennis Wise in the Community Ball at the prestigious Savoy Hotel in London and with over 250 people in attendance, the night was a roaring success.

One of the many schools we support, Parkwood Hall School, made a special appearance to entertain the guests at the reception with their Steelband and then the evening saw entertainment

from Mark Walker, Jason Allen, Lady Grey Productions and The Colour Movement.

These events are held to raise money for Dennis Wise in the Community, which is soon to be made into a registered Trust. The total so far from the evening, which includes a very generous donation of £25,000 from Gallions Housing Association for a bus, looks to be in excess of **£57,000** which is amazing. That will see the total amount raised to date reach the £800,000 mark!

The bus donation from Gallions will be the fifth bus with the fourth one ordered and due to be allocated to a school soon.

A big thank you from Steve Frankham, Pat Saville and Becky Bosman to those who helped make the evening a great success.

Here's to the next great event and reaching the £1,000,000 mark.....



OFFICE BAKE OFF



Inspired by the 'Great British Bake Off' the Oxford office held a Great Frankham Oxford Bake Off

earlier this year in aid of the Big Bus Challenge. 18 cakes were slaved over and entered and sold off in slices which raised a total of £80. **Kenny Peters** was the overall winner with her White Chocolate and Raspberry Marquise.

Following Oxford's success, the Sidcup office held their very own Halloween themed Great



Bake Off with 16 amazing entries. The standard was incredibly high so the judges had a really tough decision to make but it was **Amanda Rogers** who was crowned the champion! A total of £53 was raised for the Big Bus Challenge.

FRANKHAM JOINS THE REAL APPRENTICE

As an extension of our Work Experience programme involving local school students, Frankham has looked into the Government initiatives for getting young people ready or back into work.

Frankham is pleased to have been able to join with Mitie on the scheme and has undertaken two six week placements.

Kishan joined Frankham in February and through a structured programme was introduced to various aspects of our work in both Building Services and Structural Engineering. We also had Tanya

join us in June working in our in house recruitment company Pro-Link. Tanya has since been employed full time with us as a Receptionist at our Sidcup HQ.

"I very much enjoyed the placement and thought my site manager (John Hall) was excellent and taught me as much as possible given the time frame and amount of work to do. FCG as a whole were very welcoming, introducing me to a lot of their disciplines and kept me very much involved with work to do throughout the placement."
Kishan Vadgama – March 2013

FRANKHAM NINJAS BRING HOME SILVER

On the 9th June 2013, our finest team of Ninjas (Becky Bosman, Jo Silley, Vikki Gray, Oliver Morse, Amar Thakrar, Janet Aburn, Jack Aburn and Matt Kent) took to Mote Park, Maidstone to take part in the Children Today charity 'It's a Knockout' challenge.



Dressed up in our finest Ninja outfits with attitude to boot....

There was tough competition from 11 other local teams but with great game strategy and everyone willing to win we went on to win each of our rounds in spectacular style.....

Unfortunately we were just pipped to 1st place by one point...not bad for our first time!

Thanks to the great team who took part and to those who supported us and donated sponsorship money.



FRANKHAM

LIFE

Frankham HQ features in the film "The Northern Paradigm"

Frankham was recently approached by Erica Kacikova, a producer from Eavesdrop Films to use the HQ building to feature in the last scene of the film the "Northern Paradigm".

1. Please can you tell us a little but about yourself and what you do?

I work as a freelance Location Manager for various film productions and I'm also a part of the production team at Eavesdrop Films. Eavesdrop Films is an independent production company based in the UK. Our show reel includes a number of short films, corporate commercials, music videos and feature films. A number of our projects have been featured in various film festivals all over the world. Our latest music video production was for a well known Korean star G-Dragon.

2. What are you currently filming and who is it for?

Eavesdrop Films is co-producing a feature film with Northern Paradigm Productions. The film is a drama about an ex military veteran searching for the truth about his brother's death and finding himself on the journey. The film also called The Northern Paradigm, is a self funded project by Mark Hall, a new and upcoming director. More details can be found on Facebook and IMBD.

3. Why this building and location, how did you come across it?

I came across your building by an accident. On a search for a "coffee shop" location around Sidcup for one of the film scenes, I got lost and ended up in your business park. My passion is architecture and interesting buildings and I was intrigued by its unique design.

4. What is the scenario in the scene that you are to be shooting?

The scene is the happy ending in the film, the main character comes to terms with his brother's death, his turbulent past and looks forward to the future with a woman he meets on the self discovering journey. The tall shiny building represents the shiny new life that lies ahead of him.



FRANKHAM GOING GLOBAL

Frankham RMS is delighted to announce that it has been **Shortlisted to Top 5**, in the category **Partnership of the Year (with Vinci Facilities)**, at the Institute of Risk Management - Global Risk Awards 2014.

Institute of Risk Management



DEBORAH O'DONOGHUE Assistant Architect, Haywards Heath.



Deborah has recently joined Frankham as an assistant architect working at the Haywards Heath office.

1) You have been at Frankham for a few months now, how have you found it?

I have really enjoyed it. It has been a challenge and I love the Team here at Haywards Heath, they are very supportive and good looking! It has been wonderful to see the Team grow and it is very inspiring for the future of our industry and great to be a part of it.

2) What is the best advice you have been given?

My Mum always reminds me that when something goes wrong "it's not the end of the world" and there is always a recovery plan to put in place.

3) If you could choose one amenity to add to the workplace, what would it be?

A sofa that pulls out into a bed for those days when you have to work late to meet a deadline.

4) What was the single-most influential event in your lifetime?

The decision to take up Architecture which was influenced by my Art Teacher, Miss Riley who was very impressed by some sketches I did of the Georgian Architecture in Dublin and suggested that I should become an Architect.

5) If we came to your house for dinner, what would you prepare for us?

I'm assuming it's not the whole company! Cider Chicken as that is my signature dish with of course, potatoes, because I'm Irish.

6) What three things would you take to a desert island?

- Bruce Willis
- First Aid Kit (for Brucie as he tends to get injured a lot)
- Dark Chocolate Hobnobs

7) If you could splurge on 1 must-have item, what would it be?

Definitely a house as I am dying to get on the property ladder and have a place of my own.

TANYA MOUSTAFA Receptionist, Sidcup.



Tanya has recently joined us as full time receptionist at our HQ office after successfully completing the MITIE Work Experience programme.

1) Tell me how you worked effectively under your apprentice scheme to gain your full time position as the company receptionist?

I feel that a combination of previous work experience and communication skills gained whilst studying has contributed to my success at Frankham. Working for Pro-Link previously has also given me a head start on familiarising myself with the way the Company operates.

2) What is your greatest strength?

My greatest strength is my people skills. I enjoy having a client facing role and the interaction it brings. I also respond well to challenges as I feel this is important to my personal development.

3) How would you rate your memory?

I think my memory is average, however, I am hoping to improve upon this and feel that my role at Frankham will help. As the first point of call I will be expected to remember key members of staff, their roles, departments and general Frankham protocols.

4) What are your goals for the future?

I would like to continue developing my role within Frankham and I believe this will contribute to my growth on a personal level also.

5) What other languages do you know?

My family are of Turkish Cypriot descent which has given me the advantage of being able to speak both Turkish and English fluently. I have found this to be of great use when travelling to Cyprus or Turkey.

6) What do you do in your spare time?

When I was a teenager I was a keen dancer and entered competitions. I still have a love of dance, however, these days I tend to spend more time socialising with family and friends. I enjoy going for meals and spending quality time with my family.

7) If you could be someone else for the day, who would it be?

I am a big fan of the Les Twins who are well known in the dance world for being talented hip hop dancers and choreographers. Even to interview them would be a dream.

GOVERNMENT AGENDA

Frankham HQ was visited in November by Bob Neill, our local MP and Vice Chairman for the Conservative Party. Bob spent many hours with key Frankham staff discussing the key issues and challenges that a Design based construction SME company faces.

Some of the issues discussed were to continue to streamline the planning process to release construction projects more quickly, streamline procurement processes and costs to companies, consider Government support and financial assistance for training to encourage the next generation of construction professionals and the Government's other initiatives to encourage growth in the construction sector.

As a resident of Chislehurst, Bob is closely involved with a number of local organisations and meets regularly with residents and community groups, voluntary organisations and local business, to hear their views, campaign on their behalf and represent their concerns at Westminster. It was a welcomed meeting.

ABOUT BOB

Bob Neill was elected as the Member of Parliament for Bromley & Chislehurst in June 2006. In May 2010, Bob was elected for a second term as MP for Bromley & Chislehurst. He served as Parliamentary Under Secretary of State at the Department of Communities and Local Government until September 2012, with responsibilities for the Fire Service, Thames Gateway, the Olympics, local government and planning. In September 2012, he was made Vice Chairman of the Conservative party for Local Government.



Qualifications

Colin Aburn graduated this summer with a 2.1 BSc (Hons) in Building Surveying (Consultancy Management).

Stuart Brown within the Topo team graduated this summer with a BSc (Hons) in Civil Engineering Surveying.

Mike Bricknell has achieved his membership of the Chartered Institute of Building and Associate member of the RICS.

Fenja Scarisbrick-Jones achieved a 2:1 BSc (Hons) in Environmental Management from the University of London, Birkbeck College.

Lindsey Dobbin achieved his degree this summer with a BSc (Hons) in Civil Engineering.

Mat Cowell achieved a MSC in Building Rehabilitation this July.

Congratulations to the above mentioned in their pursuit of personal and professional achievements.



**Sidcup (Head Office)**

Irene House
Five Arches Business Park
Maidstone Road
Sidcup, Kent
DA14 5AE
T 020 8309 7777

Oxford

Wootton Business Park
Wootton
Abingdon
Oxfordshire
OX13 6FD
T 01865 322 500

Leeds

Suite 136
4100 Park Approach
Thorpe Park
Leeds
LS15 8GB
T 0113 3970 332

Haywards Heath

21 Perrymount Road
Haywards Heath
RH16 3TP
T 01444 444 900

Central London

Third Floor, Baird House
15-17 St Cross Street
London, EC1N 8UW
T 020 7651 0790

enquire@frankham.com
www.frankham.com



FRANKHAM OPPORTUNITIES

Frankham has seen an increase in work and opportunities across all sectors and this is creating opportunities in all of our service teams. These are inclusive, from school leavers and graduates to more experienced staff.

If you are looking for a new challenge or know someone who may be, please have a look at the careers page on our website or contact our in-house team, Pro-Link Europe, on 020 8309 2701.

Frankham Consultancy Group is an equal opportunities employer and welcomes applications from all sections of the community.

SHARE YOUR IDEAS

Frankham is fully committed to customer service and we continue to regularly monitor feedback from our clients through Frankham Direct.

frankham.direct@frankham.com

This email address allows you to contact Frankham's Executive Board directly, and encourages positive feedback and suggestions for future improvements.

"Feedback is the food of champions"



FRANKHAM