

WINTER 2010

9
LIFE IS THE NEWSLETTER OF
FRANKHAM CONSULTANCY GROUP

2
KEY PROJECTS



4
SCHOOLS SPECIAL



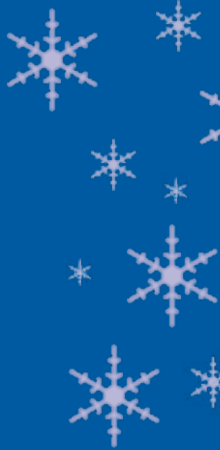
5
NEW SERVICES



6
CORPORATE SOCIAL RESPONSIBILITY



9
AWARD SUCCESS



A WINDOW TO THE WORLD OF FRANKHAM



SPENDING REVIEW

Providing Strategic Asset
Management advice

SCHOOL FOCUS

Range and depth of our
work

**NEW TECHNOLOGY &
STAFF DEVELOPMENT**

Investing in our future



FRANKHAM



FRANKHAM

L I F E

STEVE FRANKHAM

We will certainly not forget the events of 2010 in a hurry! Once again, we have had our share of world disasters, tragic earthquakes, another Tsunami, our skies cleared of aircraft for several weeks due to the spillage of volcanic ash and, of course, the disaster of all disasters was England's World Cup efforts.

We have also seen the first Coalition Government formed since the 1970s which, by the way, only lasted eight months and prior to that it was during World War II. As we know, the new Government has now delivered to the nation their austerity measures and spending cuts. Let's hope this doesn't require the reintroduction of rationing cards!

During this year, we have also seen various companies collapse, having been perhaps too focused on keeping the City boys happier than their clients and supply chain. I am certain there will be lessons learnt, the suicide bidders will be deterred from buying work and, hopefully, our clients will not be totally focused on the bottom line. We have worked hard to maintain financial stability over the year and, hopefully, this will become a priority in the eyes of our clients when reviewing the criteria of their bid. As we all know, the cost of cleaning up failed companies is very rarely recovered in full, let alone the delays that are incurred and inconvenience caused to our end users.

We all know that the spending cuts will affect all our companies and many of us have, over the last two years, driven cost savings and efficiencies into our business so it will now be even tougher protecting jobs and livelihoods. There is, however, some light at the end of the tunnel. With growth in our manufacturing and commercial sectors, our London office is extremely busy.

The housebuilding sector is a main stay of our industry and really does need the banks to do their bit by supporting and funding existing and new businesses and, just as importantly, they need to assist the many youngsters who need to step onto the property ladder. They are critical to the housebuilding market. Apparently, it has been reported that the average age of a first time buyer is now 37 years old!

Despite the tough times we are all facing, I have to say that our industry hasn't forgotten how to support worthy causes and especially needy children. At Frankham, we have a great belief in trying to put something back into society and, along with so many of our clients, supply chain, friends and Frankham staff, we raised £43,000 at our annual fundraising lunch in November. So a huge thank you to everybody who supported such a fantastic day, you are all stars.

As a group of companies, we know that we must remain focused on the challenges ahead and continually strive for improvement. Recent successes such as Royal Free NHS Trust, St George's Healthcare NHS Trust, Lambeth Building Schools Frameworks and ranking number one in the East Thames Group Employer's Agent KPI League Tables prove that we are going in the right direction.

We have continued to invest in our future and it is always pleasing to see our staff achieving success with their further education (see page 9). Just like the Chilean miners, we will never give up and miracles do happen.

As a self confessed football nut, I am certain that many of you, like me, were completely gob-smacked with the recent World Cup announcements. However, we need to realise that there are still many continents that have not been given the opportunity to stage such a prestigious tournament. Maybe it's not all bad news, both Russia and Qatar will need the help of the many experienced stadium, low cost carbon and infrastructure designers that we have in the UK so opportunities beckon and, perhaps, a negative will become a positive for our construction industry.

So on that upbeat note, can I wish all our clients, supply chain, friends, staff and their families, a fantastic holiday and a very prosperous New Year.

Steve Frankham
Chairman

“
WE MUST
REMAIN
FOCUSED
ON THE
CHALLENGES
AHEAD.”



FRANKHAM GETS CLEAN BILL OF HEALTH

Frankham's extensive experience in health building refurbishments, extensions and successfully managing these projects in occupied space, has recently been recognised in two major Framework awards.

Firstly, we are delighted to announce our appointment as consultants on the St George's Healthcare NHS Trust Framework for Architectural, Mechanical and Electrical consultancy services.

St George's is one of the UK's largest teaching hospitals and serves a population of 1.3 million across South West London.

We are looking forward to working collaboratively with the Trust and their appointed consultants to deliver the Trust's vision, strategy and capital programme over the next three to four years.

The works are likely to include projects to change office accommodation into inpatient areas, additional high dependency capacity, redevelopment of the 5th floor children's hospital and meeting single sex accommodation requirements.



October saw our appointment as consultants for the Royal Free Hampstead NHS Trust Framework for Architectural services.

The Trust's main site consists of a 15 storey tower block constructed in the early 1970s with a range of ancillary buildings of varying ages. Over the next few years, the Trust plans to carry out a number of Capital Works programmes.

Frankham's proposals showed how we will address current key challenges facing capital projects at Royal Free and the measures we will take to promote excellent communication with the project team and stakeholders.

We also demonstrated our performance measurement methods and how we will ensure continuous improvement.

SMOOTHING IMPROVEMENTS IN RAIL CATERING

Frankham's multi-disciplinary design team has provided a fast turnaround to a specialist food environment requirement: a prestigious new rail catering contract that required swift design services for the construction of three new units, all within an existing station building.

Our Architectural, Structural, Mechanical and Electrical Engineers and CDM Co-ordination team designed and prepared a fully integrated contractor tender package within four weeks from receipt of the client brief.

The new units are of steel framed construction and located directly over the train platforms of a mainline London station. They take receipt of dirty catering trolleys which are stripped, washed in specialist washers, prepped and re-stocked prior to re-loading.

Frankham's design included the technical brief for cold room storage, welfare and localised office spaces.



Frankham's experience in rail Health & Safety requirements allowed us to quickly prepare a compliant tender brief.

The total project construction value is approximately £1.5m, and is due for completion early in 2011.

FIRE WORKS AT HENLEY BUSINESS SCHOOL

The University of Reading has appointed Frankham to carry out Fire Precaution Works.

The University identified a potential need for structural upgrades to a number of buildings to improve and reinforce the fire precautionary arrangements.

Frankham is undertaking a structured Qualitative Design Review (QDR) so that a design for the delivery of fire precautions can be prepared.



NEW JETTY IN KENT

Frankham has been appointed to design a new jetty in Belvedere, Kent. The site owner has recently installed a new bitumen plant where there is an existing 1930s timber jetty that is in poor condition and considered beyond economic repair. A new jetty is required to allow for road stone to be brought to the new plant via the River Thames, rather than by road.

Some of the existing jetty will be removed, whilst other parts will remain as habitat for marine life. The reinforced concrete landward section of the existing jetty approach will have a gravel covering that will attract birds.

Our Maritime Engineers are providing design services to ensure the structure supports the conveyor system enabling the jetty to function effectively.



FRANKHAM

L I F E

SCHOOLS 2010 FOCUS:

Sustainability and value for money through refurbishment.

With the Department for Education's consultation on school funding expected to report by the end of the year, schools and local authorities will be bracing themselves to see how their budgets are likely to change in the future.

For nearly three decades, Frankham has been working with local authorities and schools to maintain, refurbish, remodel, extend and build new school facilities. We are skilled in bringing together clients, stakeholders, project teams and contractors to develop effective and aspirational briefs. Our subsequent designs provide value for money solutions with carbon efficiency.

We outline here some of the key issues involved in school refurbishment and a few of Frankham's current achievements.



FOR NEARLY THREE DECADES FRANKHAM HAS BEEN WORKING WITH LOCAL AUTHORITIES AND SCHOOLS.



WEST BERKSHIRE FEASIBILITY

Frankham is currently undertaking feasibility studies for remodelling works at two primary schools for West Berkshire Council.

The accommodation at Hungerford and Long Lane Primary schools are under pressure from rising pupil numbers and suffer with inadequate size and shape of classrooms. Frankham is looking at the existing schools to produce a master plan for each.

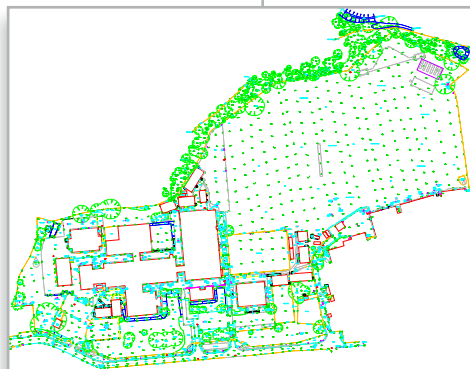
Our design will address the requirement for schools to adapt to long term changes with the most effective configuration to achieve the best possible solution.

EARLY SURVEYING

In school refurbishment projects, buildings are often of varying quality and condition and up to date survey information is important for early feasibility studies and design brief development.

Frankham has completed numerous asset condition surveys, complete with costings, priority ratings and programming, for local authorities. We also undertake extensive DDA assessments of the existing buildings prior to completion of the design for both new build and refurbishment works.

Our topographical survey team carries out internal and external measured surveys of schools. At Langley Park, for example, we produced drawings of the existing school grounds and access roads. The survey was aligned to Ordnance Survey grid and level datum using GPS.



BUILDING SERVICES EFFICIENCY IN REFURBISHMENT

Early involvement of building services engineers is key to effective brief development and programme planning. Frankham's consultants will suggest ways to mitigate risks to affordability and delivery, and propose a plan to ensure carbon emission reduction is understood as a requirement by the project team.

DEVELOPING EXISTING BUILDING SERVICES IN TOWER HAMLETS

Frankham is currently providing full Mechanical and Electrical Engineering services for Meath Gardens Children's Centre project to extensively remodel the internal space.

Frankham's design utilises existing under floor heating services in parts and incorporates a new low-temperature, hot-water heating system via radiators. Existing electrical services are retained and, in parts, complemented by new.

LAMBETH BSF FRAMEWORK

Frankham has recently been awarded the contract to provide Civil and Structural Engineering services for the expansion of Sunnyhill Primary School.

The team is carrying out structural designs to maximise the potential of the Sunnyhill site.

The design will expand the school from two forms of entry to three and address issues of condition, suitability, security, access and sufficiency of the existing internal and external spaces, as well as below ground drainage.

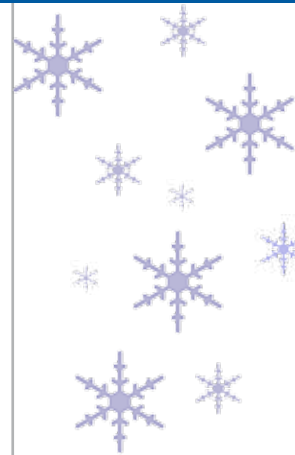
The new sports hall design must complement the existing main building, which is Grade II listed and built in the 19th Century. This is likely to result in a complicated arrangement of rooflights spanning the cranked beam supports.

FLEXIBILITY & ADAPTABILITY

Flexibility and adaptability are fundamental to the design philosophy of any new or refurbished school.

The flexibility element will allow for short term changes to take place, such as different classroom layouts to suit different teaching styles, subjects and activities. Generally, a simple structural system of the building should encourage maximum flexibility, with visual connections between classrooms.

Adaptability addresses the issue of adjusting the concept design to long term changes and the Frankham design team will allow for this in both structure and building services.

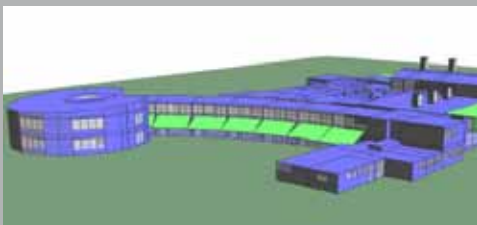


SPECIALIST EDUCATION DESIGN

Having delivered numerous stand alone and incorporated Special Education Needs (SEN) facilities, our dedicated education staff have a full understanding of the latest developments in this field.

We are fully up to date with specialist SEN requirements and are highly experienced with firsthand understanding of SEN, disability and the philosophy of inclusion.

CARBON EFFICIENCY



Frankham recently completed phase one of the Sudbury Primary School project, which officially opened Autumn 2010.

All existing areas of the School required full refurbishment, including replacement of all building services.

Wherever feasible, the existing building fabric was renovated to increase its thermal efficiency and the majority of the spaces have the capability to use passive ventilation.

Having minimised the site's energy demand by passive means, much of the School's needs will now be produced on-site using renewable energy.

The design solutions incorporated by our Low Carbon Consultants and Mechanical and Electrical Engineers have resulted in an estimated 26% reduction in annual CO₂ emissions.

ASSESSORS IN ACTION

The private education and care provider, Acorn Care and Education, required five new classroom blocks and office space on the site of the existing Heath Farm SEN School near Ashford, Kent.

Frankham was appointed as the BREEAM assessor and worked with the client, contractor and design team ensuring the objective to reach a minimum of a BREEAM Good rating, which was successfully awarded in November 2010.

An environmental review was provided during phase one to accompany the planning application. After planning approval, the site was further investigated by geotechnical and contamination testing.

Phase one was completed in July 2010 and the project was short listed for this year's RIBA Awards.

For further information, please contact Stuart MacMillan at stuart.macmillan@frankham.com



ACCREDITED CLIENT DESIGN ADVISOR SERVICE

The Royal Institute of British Architects is running a database of chartered architects accredited to act as Client Design Advisors (CDA).

Frankham's Stefan Pop is now one of three RIBA accredited architects based in Kent, able to help clients through the design process. The CDA works directly with clients, providing vital independent advice.

Safeguarding the quality and value on a construction project is a full-time job and, as a CDA professional, Stefan can support clients in strategic decision making, stakeholder consultation, design brief development, budget-setting, feasibility studies, obtaining planning consent, procurement procedures and design proposal assessment. A CDA professional can also advise on financial planning, whole life costing, preparing a project programme, as well as evaluating bids, construction teams, design teams and value for money.

Stefan will make sure that your vision and aspirations are fully reflected in the design team's proposals providing exciting functional and affordable solutions.

For further information, please contact Stefan Pop at stefan.pop@frankham.com.



Stefan Pop



FRANKHAM

LIFE



STRATEGIC ASSET MANAGEMENT

FOR THE SOCIAL HOUSING MARKET

The social housing market's objective to create more available, affordable and 'green' housing is becoming increasingly challenging.

Following the cost reduction requirements set out by the Government, it is important to review the big picture, considering how to achieve cost savings without compromising your aspirations and objectives. Major strategic change is needed with greater involvement from the private sector in both management and funding.

Frankham offers independent support and strategic advice to clients to realise potential savings by anticipating market development and formulating a plan for stock development.

We strive for continued improvement and work in partnership with our clients to assess local services and provide practical recommendations to improve people's lives.

If you would like further information on Strategic Asset Management, please email info@frankham-rms.com or call 020 8309 7777.

FRANKHAM
CAN OFFER
INDEPENDENT
SUPPORT AND
ADVICE TO
CLIENTS IN
REALISING
POTENTIAL
SAVINGS.



UPGRADING TECHNOLOGY WAS OUR IDEA!

Frankham underwent a technical revamp in the Summer of 2010 and replaced all staff desktop hardware and software to Microsoft Windows 7 with Office 2007 Professional.

Additionally, all AutoCad Software has been networked and upgraded to the latest 2010 versions to facilitate the creation of project drawings in the most commercially popular format.

Clients, suppliers and stakeholders are now able to readily access the designs and contribute their thoughts throughout the design process.

This investment has led to improved customisation of services and provides faster information exchange without compatibility issues between external partners and internal disciplines.

INTERIOR DESIGN IS EXPANDING...

Frankham has extensive experience in providing an interior design service from inception to completion. The design team uses your aspirations to create exciting and innovative interior designs, whilst maintaining commercial awareness. Our interior designs provide an environment that responds to both your current and future requirements.

Utilising resources to undertake projects in the commercial, retail, restaurants, health and public sectors, Frankham can deliver a bespoke service. We are currently undertaking several new and exciting interior design projects involving an interior corporate branding project for London Borough of Bromley Libraries and Office refurbishments.

For further information, please contact Nicole Nevin at nicole.nevin@frankham.com.



breeam

IN-USE AUDITING

Add value to existing buildings and achieve 'outstanding' results.

Your building may be designed to be green but, if it is not being run efficiently, you will not see the full benefit. Frankham can help you gauge how 'green' your building is in practice by providing a comprehensive assessment of major environmental issues that affect buildings throughout their operational life.

These standards are compatible with the major regulatory and corporate reporting systems that are relevant to all non-domestic commercial, industrial, retail and institutional buildings.

BREEAM In-Use audits provide information about environmental performance in terms of the building, the operation of the building and how clients manage their activities within the building.

The information will enable you to establish the environmental sustainability of existing buildings and portfolios, their operation and activities to help both reduce cost and improve the environmental sustainability.

In addition to this, the BREEAM In-Use audits must be included within the BREEAM Design and Procurement and Post Construction requirements for an OUTSTANDING Rating.

For further information, please contact Johanna Jarvinen at johanna.jarvinen@frankham.com

2010 Building Regulations: ACHIEVING COST EFFECTIVE COMPLIANCE

Critical changes to Building Regulations took effect on the 1st October 2010.

A number of significant requirements have been imposed, so careful review of the design will be needed if an initial application was not made to Building Control before 1st October 2010. This may involve re-design and have a significant impact on capital cost.

Frankham's Low Carbon Consultants can undertake energy studies to help clients identify the most cost effective solutions, including optimising the building's shape, orientation and maximising the potential for natural ventilation. The greatest benefit for new projects will be realised by our consultants working with the Architects from the earliest feasibility stages.

New non-domestic buildings are required to achieve 25% to 40% lower carbon emissions compared to previous regulations. Frankham can identify the most feasible Low or Zero Carbon Technologies whilst taking into consideration capital cost, future maintenance and operational costs, the location of the site and the availability of a possible energy source.

For further information, please contact Paul Eslinger at paul.eslinger@frankham.com



Platform Humps – What Are They?

Platform Humps are a raised section of platform that gives level access to trains. This is necessary to comply with Railway Vehicle Accessibility Regulations (RVAR) which stipulates that the horizontal gap between the platform and the train cannot exceed 75mm, and the step cannot exceed 50mm. London Underground opted for platform humps as a solution to this problem.

Frankham has been involved with their development over the last seven years. After initial trials on the Waterloo &

City Line were successful, permanent humps were installed on the Victoria Line and a roll out of this new design to all other stations is underway.





FRANKHAM

L I F E

DENNIS WISE IN THE COMMUNITY: LET'S REMEMBER

Our very last fundraising function for the year was held on the 5th November at Oakley House in Bromley and the lunch was sold out long before the event took place. Our host, Adger Brown, provided fantastic entertainment, with guest appearances from Jimmy Jones, Mark Walker, Mike Delaney, David Redfearn and, not forgetting, Keith the thief.

On the day, £43,000 was raised, taking our total fundraising to date to a staggering £553,381.

As we were nearing Remembrance Sunday, Steve fined anyone not wearing a poppy, raising £890.00 for the British Legion, another worthy cause.

As you may be aware, Dennis Wise in the Community was formed in 2000 by Steve Frankham and Dennis Wise with the aim of providing much needed support to their local communities. Listed below are some of the organisations for whom we have been proud to raise funds for on a regular basis.

- Parkwood Hall School. Residential/day special school steel band.
- Marlborough School. For children who have severe, multiple and profound disabilities.
- Northlands Multiple Sclerosis Society. A day centre for MS sufferers.
- Bromley Autistic Trust. Improving the quality of life of people of all ages with ASD.
- Threshers Day Nursery. Provides regular meals, clothing and opportunities to learn and play.
- Demelza House. Provides one-to-one care with a team of highly skilled care team members, which includes palliative care nurses and assistants.
- Chalfont St Peters Football Club. Bringing sport and football to the community.

We are also proud to announce that on Wednesday, 15th September 2010, Steve Frankham and Dennis Wise presented our very first sunshine coach to St Nicholas School in Canterbury. **Look out for that coach.**

Despite the tough marketplace, our supporters have been magnificent; we cannot thank the many clients, supply chain and friends that have contributed to make this all possible.

Frankham will be organising a May Ball at the Grosvenor House Hotel in Park Lane on 21st May 2011.

If you would like further information, please do not hesitate to contact Pat Saville on 020 8309 7777.



Frankham has been involved in the Bromley Education Business Partnership scheme with the London Borough of Bromley and have attended several events at local schools.

The purpose of the partnership is to use local business people to introduce the pupils to the rigours of a working environment and help prepare them for leaving school.

Previous events included a CV workshop and mock interviews to sharpen presentation techniques.

A 'Dragon's Den' style event was held where pupils were asked to design a product and business plan before presenting to a board of investors in a format similar to the popular TV Show.



Oliver Morse, from Frankham Projects, is one of our attendees, "it is important that companies like Frankham, who have been involved in local projects over a number of years, help pass on any experience we have to our future business leaders and help them towards employment", he said.

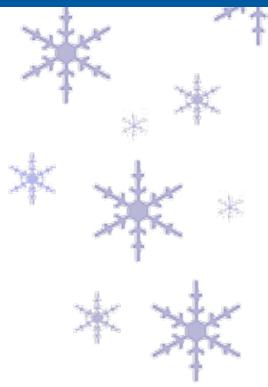
"We first started working with Frankham during the initial stages of the new-build at Langley Park Boys School and have enjoyed this relationship for the last four years. Many of the employees have supported our events for secondary school students by giving up their time to work with the young people.

This has been to help with job seeking skills as well as developing their enterprise skills through our own Dragon's Den activity.

Our main contact, Alan Fletcher, always helps us when he can and has encouraged other Frankham team members to get involved. He has also invited us along to the networking events in London and through this we have recruited other organisations to work with young people.

Lesley Holland, Operations Manager
Bromley Education Business Partnership,
London Borough of Bromley





COMPUTERS 4 AFRICA

Frankham donates old PCs

Due to an ongoing IT upgrade throughout our offices, Frankham recently donated a number of old computers to the **Demelza Charity** and **Computers 4 Africa**.

Demelza supports children's hospices around the UK, providing support for children and young people (0-19) who are not expected to reach adulthood, and also offering support to their families. Children's hospices can differ significantly from adult hospices in that many of the conditions children and young people are suffering from are degenerative in nature and progress over many years.

Over the last few years, **Computers 4 Africa** have shipped more than 6000 computers to schools and communities in the following countries: Tanzania, South Africa, Cameroon, Zambia, Zimbabwe, Sierra Leone and Namibia.

FRANKIE the Frankham Pony

This September saw Team Frankham spring into action and rescue a small pony that had been abandoned near a motorway not far from Head Office.

Four friendly policemen and staff from Frankham arranged for the pony to be taken to a safe yard where he received a health check by a vet. As no one came forward to claim the pony, Steve Frankham, on behalf of Dennis Wise in the Community, kindly offered to sponsor Frankie, who will be trained and donated to a local riding school for disabled children.

To aid his training and develop his trust in people, the Australian Horse Training team in Goudhurst have kindly offered to help.

We hope he will come home a reformed character and ready to start his important career as the perfect pony for the disabled children.



(www.australianhorsetraining.co.uk)

COMPANY NEWS

FRANKHAM RELOCATES ITS LONDON OFFICE

Frankham has a new office in central London, located at Gresham House, Holborn Viaduct.

This ideal location provides us with an opportunity to extend the service we provide to our existing clients in the City and West End. It also facilitates the expansion of our services to new clients as our workload grows. The office has conference facilities allowing instant access to the Group's three other offices in the UK, as well as a client meeting place.

The commercial property team in London have considerable experience in offices, retail and residential development.

Business Development Consultant, Amanda Dunn, with 17 years experience in the Commercial Property market, joins the team focusing on future opportunities in and around London.



For further information, please contact Mark Davies at mark.davies@frankham.com

QUALIFICATIONS

Frankham is pleased to announce that:

James Mitchell, John Seaton and Chris McDonald completed their degrees with first class honours. James studied Quantity Surveying, John studied Surveying and Mapping Sciences and Chris studied Construction Surveying Management.

Adam Powrie achieved a 2nd class honours degree in BSc Building Surveying.

Nurgul Ozden has passed her final accounting exams and has now obtained ACCA Affiliate status.

Laura Pearce completed her BREEAM Assessor Course and is now a registered BREEAM Commercial Assessor. The Commercial Scheme allows assessments of Industrial premises, Retail and Offices, which complements our existing BREEAM assessment service offerings.

Lesley Quinn and Stuart Nagle have both successfully passed their Occupational Health and Safety Management Systems Lead Auditor Training Course. This allows them to audit external clients' Health and Safety Systems.

Frankham already has a working relationship with Achilles to act as their auditors, assessing railway contractors and consultants against the Link Up railway accreditation scheme for all Health and Safety matters.

Eddie Maguire recently undertook a CDM Co-ordination Management Course and is now applying for membership to the Association for Project Safety.

Eddie Maguire and James Watchman recently completed a course with the London Fire Brigade. Both are now carrying out simple Fire Risk Assessments and gaining experience to enable them to apply for the IFE Register of Fire Risk Assessors.





FRANKHAM

LIFE

REDUCING THE FOOTPRINT OF THE CONSTRUCTION PROCESS

Frankham received recognition for Energy Efficient Site Accommodation in a Carbon Trust publication.

The Carbon Trust report included some of the details from the Frankham report for Speedy Hire's new EnviroCabin. These energy efficient site accommodation alternatives are designed to offer improvements in insulation, lighting, heating efficiency and waste management.

The use of the cabin has been shown to achieve similar energy savings as permanent, commercial buildings by reducing CO₂ emissions by more than 50%, compared to standard accommodation, and is 98% recyclable.

Frankham can advise that this report has led to wider usage than first envisaged.

For further information, please do contact Stuart MacMillan at stuart.macmillan@frankham.com.

REDUCING
SITE
ACCOMMODATION
CO₂ EMISSIONS
BY MORE
THAN 50%. ■■

GREENHEART

AWARD SUCCESS

In our previous issue of 'Life', Frankham reported that Dartford Borough Council had commissioned us to design a new pedestrian and cycle link through Central Park and a major recreation space in the heart of Dartford town centre. The project had been shortlisted for the 2010 Institution of Civil Engineers (ICE) Engineering Excellence Award.

Since then, Frankham was awarded the ICE Engineering Excellence Award.



ICE South East England
West and East Sussex Branch
Engineering Excellence Awards 2010
Community Award
Presented to
Dartford Greenheart

ice

ICE Engineering Excellence Awards 2010
Community Award
Presented to
Dartford Greenheart

PHIL WRIGHT Divisional Director



1) Welcome to Frankham Phil, can you tell us a bit about your plans for your divisions over the next two years?

The areas of the business that I am responsible for are Environmental, CDMC, Health & Safety, Land Surveying and our London team.

Sustainability is now part of everyday life and I see potential to develop and grow our environmental services. Increasing regulations and carbon reduction commitment will create opportunities for our experienced team. This also forms part of our Corporate Social Responsibility at Frankham.

Demand for our CDMC and Health & Safety services are growing and there is a diversity of opportunities in the market place as clients and suppliers alike solicit our experience to ensure they comply with regulations.

Technology investment has enhanced our land surveying team with the recent purchase of the Leica C10 laser scanner enabling us to gather 3D data speedily and enhance our offer to the market. We are expanding our client base for this team which comprises varied skills enabling us to provide measured building surveying, area measurements, topographical surveys as well as specialist rail surveys.

Our London Team, based at new offices in High Holborn, is focused mainly on the commercial sector in and around London which has an expanding workload. **Growth is the plan.**

2) Where do you see yourself in five years?

Overseeing an established consultancy in London with the Frankham brand in the Commercial sector. Also being a member of the Exec Board – but that's not up to me (laugh)!

3) What do you think has been your greatest professional achievement and why?

Growing a business from £2m to £9m in five years. It was hard work, and sometimes painful, but always rewarding and fun.

4) On a personal note, what was your best holiday and why?

Australia 2004 with stopovers in Dubai and Bangkok, it was a chance for my four children to experience other cultures, see some fantastic places and meet their relations. Manly Beach in Oz is heaven on earth!

5) What is your favourite book and why?

Not really a favourite but recent good reads are 'Waiting for the Etonians' by Nick Cohen, about life in England before the crash.

And 'Farewell but not goodbye' Autobiography by the late Sir Bobby Robson.

6) Which TV programme would you consider a 'secret pleasure to watch' and what is your favourite film?

My favourite TV programme is Spooks and favourite film is Sergio Leone's 'Once upon a time in America'. Robert De Niro is awesome.



JOHANNA JARVINEN

Senior Environmental Consultant



1) Hi Johanna, can you tell us a bit about your role within Frankham?

My role has evolved during the years. I started by conducting environmental surveys and running the Group's Environmental Management System, however these two are only part of my job role now.

Most of my work is carried out in feasibility and planning stages of build projects. At the feasibility stage, I work with the client and design team to make sure that the site limitations, including environmental, ecological, hydrological and geological issues have been taken into account and reported. At planning stage, it is my role to make sure that the correct surveys are carried out to ensure planning approval will be granted with minimum conditions.

I also write Sustainability Statements for planning purposes. This statement collates all the information about the sustainability of the design in one report. Another part of my role is as a BREEAM and Code for Sustainable Homes assessor, as well as providing advice to the design teams on how to embed the requirements of these standards into their designs. And, of course, I have my role to play to market and develop the environmental consultancy side of the business together with Stuart MacMillan.

2) How do you feel your role impacts on providing a sustainable future?

The sustainable thinking cannot be forced on people so I think that education is the key. Therefore, by educating our clients, supply chain, staff and other stakeholders, I hope I can make people realise that it is important and they can make a difference.

3) I understand you are originally from Finland. In your opinion, how does the UK rate against Finland in sustainable development and initiatives?

To be honest, I don't keep up to date with the initiatives in Finland as keeping up to date with UK initiatives is a full time job. However, the buildings in Finland have been built to keep the heat in and district heating is generally in use in urban areas. This does help with energy consumption but Finland is still far away from reducing its energy use to the level set by the EU, mostly due to heavy industries like paper factories still consuming vast amounts of fossil fuels.

4) The Finnish are known for driving fast cars, hard drinking and enjoying life generally. When not in Finland, what do you do in your spare time?

Finnish people do a lot of sports as well, you know...when not drinking (laugh). So, yes, that's what I do: sports and drinking. Goes well together, don't you think!

5) If you had to go on a reality TV show, which one would you choose and why?

Coach Trip! It looks fun and you get to see places.

6) What is the most beautiful thing you have ever seen?

Life is beautiful.

FRANKHAM REACHES NEW HEIGHTS

With the prospect of a clear and sunny evening, a group of 12 intrepid, daredevil aviators from Frankham, including partners and families, headed north up the M40 to Banbury. The venue, an old wartime airfield, located at Edge Hill, overlooking the Cotswolds and now home to Shenington Gliding Club.

Despite initial apprehensions, everyone was made to feel welcome by the club members and instructors. Safety briefings and instructions on the use of parachutes and basic operation of the controls over, it was time to 'go flying'.

Each member of the group took their turn to climb into the front seat of the glider with an instructor in the rear, ready to be launched 1,000ft into the air at an acceleration of up to 60+ mph. At 1,100ft everyone got the chance to take the controls whilst they took in the views over the Cotswolds, with Stratford upon Avon about 15 miles ahead, and Banbury and Oxford behind them.

After several flights were completed, the group started to become a little more daring requesting aerobatic flights. Fellow instructor John Donovan, who has aerobatic training, was keen to oblige for the rollercoaster ride. With all eyes looking skywards, John put the K21 glider through its paces with a couple of loops, chandelles (steep turns) and high speed (100mph) low pass over the airfield, pulling up into a steep turn with increasing 'g' before landing.

In awe of their experiences, or maybe just relief to be back on the ground, everyone exited the gliders with a broad grin across their face and rounded the evening off with a BBQ and chat with the instructors and crew recounting their experiences.

A great evening was had by all with several members of the group taking two flights each and several vowing to return to take advantage of their three month's club membership.

For further information, please contact Geoff Purcell at geoff.purcell@frankham.com.



Frankham Top of Framework Employer's Agent KPI League

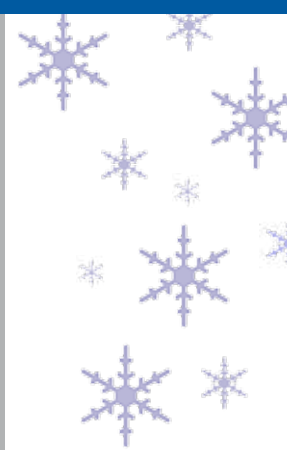
Frankham has been ranked number one in the East Thames Group Employer's Agent League Table with an overall performance score of 88%.

The quarterly KPI scores are based upon information provided by individual Project Managers within the East Thames Group, and the assessment takes into consideration the running of projects and overall performance.

Frankham has been involved as Employer's Agents on two recent successful projects on behalf of East Thames, in Havering and Broxbourne, with high levels of resident satisfaction.

We look forward to maintaining this position and securing ourselves as a preferred consultant under the new East Thames Group Framework.

“FRANKHAM HAS BEEN RANKED NUMBER ONE IN THE EAST THAMES GROUP EMPLOYER'S AGENT LEAGUE.”





**WE WISH YOU A
SUCCESSFUL
NEW YEAR.**

Sidcup (Head Office)

Irene House
Five Arches Business Park
Maidstone Road
Sidcup
Kent DA14 5AE

T **020 8309 7777**

F **020 8309 7890**

Haywards Heath

21 Perrymount Road
Haywards Heath
RH16 3TP

T **01444 444 900**

F **01444 455 642**

Oxford

Wootton Business Park
Wootton
Abingdon
Oxfordshire, OX13 6FD

T **01865 322 500**

F **01865 327 393**

Central London

Gresham House
24 Holborn Viaduct
London, EC1A 2BN

T **020 7651 0790**

F **020 7248 3144**

enquire@frankham.com

www.frankham.com



FORGET THE PREMIER LEAGUE

The tables that really matter are Building Magazine's Top 250 consultant league tables. Frankham has worked tirelessly over the last year to ensure we not only maintain our position despite the market downturn, but improve on it.

In the overall Top 250 consultants, Frankham has moved up from 68th to 62nd, our aim being to achieve a position within the top 50.

In the Top 100 Fee Earners' table, the Group is up from 61st to 52nd.

In the Top 100 Surveyors' table, Frankham is up from 50th to 44th.

In the Top 100 Engineers' table, Frankham is up from 45th to 41st

In the Top 100 Architects' table, Frankham has maintained its position at 75th.

SHARE YOUR IDEAS

Frankham is fully committed to customer service and we continue to regularly monitor feedback from our clients through Frankham Direct.

frankham.direct@frankham.com

This email address allows you to contact Frankham's Executive Board directly, and encourages positive feedback and suggestions for future improvements.

"Feedback is the food of champions"



FRANKHAM