

SUMMER 2010

LIFE IS THE NEWSLETTER OF
FRANKHAM CONSULTANCY GROUP



2 SIGNATURE BUILDING



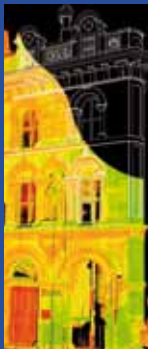
4 COMMUNITY BUILDINGS



5 SPECIALIST PROJECTS



6 BRINGING IMAGES TO LIFE



9 FRAMEWORK SUCCESS



A WINDOW ON THE WORLD OF FRANKHAM



TEAM FRANKHAM

Setting and achieving goals

NEW SERVICES & PEOPLE

Investment in the future

PROJECT NEWS

Range and depth of our work



FRANKHAM



STEVE FRANKHAM

As I pen my notes for our Summer Edition of Life Magazine, World Cup fever has taken over and we all now know what a Vuvuzela is and that it sounds like a swarm of bees! Despite all the concerns, South Africa has delivered, with the quality of the stadia and overall organisation being top rate. This time last year, we at Frankham were under no illusion that the coming financial year was going to be very tough and we too needed to deliver. We couldn't be certain quite how the year would turn out although we knew that, just like the World Cup, only the best teams would progress. With this in mind and in the knowledge that, 'when the going gets tough, the tough get going', we have worked very hard to create what we call 'Team Frankham', a culture and spirit of all working together throughout these very volatile times.

At the start of the new financial year in 2009, we knew that it was all about setting 'GOALS', protecting jobs and keeping our people employed. I am very pleased to report that we have exceeded all of our goals and achieved all of our objectives.

A key factor has been our diversity in skills and client base. We have learnt how important it has become to listen to and work with our clients in order to deliver the right outcome for all parties; we also fully understand the need to be flexible and our aim has been to provide a solid, professional service at all times.

We are also very much aware of how fast information technology is moving and that there is a continued need to invest in our future. Ever mindful of this, we have just undergone a major programme of renewing our IT equipment and updating our software, as well as investing in state of the art laser and measuring equipment.

Through continued research and development, our own software company, CamSoft, has now developed a further product called CoRAS which is another tool that will benefit our clients and ensure they can control the plethora of compliance that we now have in our workplace.

The year 2009/10 also saw the relocation of our Haywards Heath office to new premises within the town, providing our people with a modern working environment and room for further growth. In addition, we opened our London office in Holborn to better service our City and commercial clients.

Commitment to staff training and the investment in the next generation of professionals is still very high on our agenda, and we have an ongoing programme to provide leadership and management training for our young professionals who will become our future management. Accordingly, it is always very satisfying when a member of staff qualifies and the recent news that Brian Gallagher, who has been with us from school, has just become a Chartered Building Surveyor was fantastic. Along with Brian, both Ian Scott at our Sidcup office and David Wilson from our Oxford office, also became Chartered, (the words 'hat trick' comes to mind). We are immensely proud of maintaining a consistent flow of newly qualified staff and we all congratulate the guys on their achievement.

So, hopefully, our message is loud and clear – we do and will continue to invest in our Group. As we are all aware, this does come at a cost, but we believe it is a necessity if we are to continue to improve our service and achieve our vision of becoming a Top 50 consultancy practice.

Already 2010 has thrown up some difficult challenges. We have a new coalition government with new ideas and a determination to drive in severe cuts in public expenditure: that word tough springs to mind yet again. However, we still continue to add to our list of current frameworks, and some of our recent successes have been with both Sentinel and Peabody Housing Associations, Brent Housing Partnership, One Housing Group, Oxford County and Suffolk Councils and Oxford and Buckinghamshire Mental Health.

As always, we try desperately hard to improve and satisfy our clients' expectations so please let us have your feedback. Also I'd like to take this opportunity to thank our many clients who continue to complete and return the mountain of reference requests. These have become a critical part of the assessment process and, without them, all the effort that we put into our bids could become worthless. We really appreciate your time and effort, thank you.

May I wish you and your families a great summer and thank all of you for your continued support.

Steve Frankham
Chairman

“ I am very pleased to report that we have exceeded all of our goals and achieved all of our objectives. ”



Health Refurbishments

SUMMER 2010

GARSTON CLINIC IMPROVEMENTS

Frankham's brief from Hertfordshire NHS Primary Care Trust was to improve infection control in clinical areas, the poor internal working environment and extend the structure's life for a further five years.

Frankham specified new clinical wash basins with sensor operated taps, privacy window film, easy-to-clean vinyl flooring and clinical wall linings. Environmental conditions were improved by replacing old cast iron radiators with modern, low surface temperature types and thermostatic valves, insulating the single-pipe heating system to minimise latent heat gains and replacing loose rooflights with modern, insulated, dome lights to aid ventilation.

A critical objective was to maintain patient access to some clinical services during works. This was achieved by working closely with the client and on-site staff, Frankham's careful phasing of work and decanting of clinical and administrative spaces.

ACUTE DAY TREATMENT UNIT, SHRODELLS BUILDING, WATFORD GENERAL HOSPITAL

The Acute Day Treatment Unit at Watford General Hospital project involved internal alterations and refurbishment of a section of the existing Shrodells Unit to deliver a new ADTU. The ADTU is a pilot scheme for Hertfordshire Partnership NHS Foundation Trust, and offers a range of clinical and therapeutic outpatient services, in an attempt to reduce in-patient bed occupancy.

The challenge was to provide a robust, vandal resistant and anti-ligature environment for service users, making the most cost effective use of a dilapidated 'sixties eyesore'.



BIGGIN HILL LIBRARY AND POOL

The requirement for a signature building on the site of the original library is nearing fruition.

The two storey glass frontage provides unobstructed views into the new library. The straightforward, modern signage announces the presence of an additional facility making it a focal point for the local community.

The multi-coloured ribbon provides a vibrant palette of colours which are repeated internally. The use of accent colours and bold internal signage, coupled with coloured banners to shelving, quickly orientates visitors. Brightly coloured furniture also adds to the sense of fun with 'happy chairs' and wi-fi to the teenage zone and zany sofas to the 'relaxing zone'.



You would be right in thinking that this all hints at something more than just a library. Separate café and fun room, with Wii gaming, have views into the swimming pool. A more formal function room is offered for hire at first floor level.

The pool hall is light and airy with modern cladding providing diffused natural lighting whilst maintaining privacy. Deep Glulam (timber) beams and wall mounted up-lighting all add to the dramatic effect.

On a more sober note, the curved Sedum (living) roof over the pool mitigates visual impact on adjoining residents while managing rainwater run-off. Use of a combined heat and power (CHP) system generally recovers heat from the air and generates surplus electricity which can be sold back to the National Grid. We are currently reviewing the use of an additive to the water which helps minimise heat loss and does away with the need for a cumbersome pool cover.

THE OLD FIRE STATION

The Old Fire Station, Oxford, has been purchased via a joint venture between CRISIS UK and Oxford City Council. The scheme is extremely high profile in the local community as it is in a sensitive area of the City.

The plan is to revamp the buildings to create a café, work areas and other CRISIS related activities supported by access to the existing theatre and Ovada art gallery. The present scheme budget is approximately £3.46M, inclusive of all risk, contingency and fees, and the scheme is presently at the detailed design stage.

Frankham is providing the CDM Co-ordination Services for the project.

LIFE 

"The use of accent colours and bold internal signage, coupled with coloured banners to shelving, quickly orientates visitors."

METRONET SURVEYS

Transport for London, acting through London Underground, presented us with a significant challenge last summer – asking us to complete over 400 surveys of industrial buildings in a four month period.

Frankham was entrusted with a full re-evaluation of their building stock at nine rail depots across London in an exercise to establish if these key assets met the requirements of the various statutory regulations imposed on the railway environment.



At Sidcup, we have building surveyors who hold the necessary rail safety certification essential for working in this environment. This project, however, required us to commit to a significant element of additional, site-specific safety training for our core six man specialised industrial survey team. This enabled them to work safely and with confidence in these hazardous environments.

Close liaison with the depot management and staff was essential both to maintain

good access but also, and importantly, to gain information of known problems with the buildings and to understand the ambitions and expectations of the staff for their working environment.

SANDBANKS

Working with London Borough of Hounslow, Frankham has developed the scheme for a new build Residential Dementia and Rehabilitation Unit of 60 beds, with an adjoining new build Day Resource Centre for 40 day visitors.

The facility replaces the existing Sandbanks Older Persons Resource Centre which is located elsewhere on the same site.

The scheme makes more efficient use of the site to provide increased bed numbers and release a large portion of the site for a 16 unit housing development. The project is currently in the procurement process for contractor selection. The scheme will then progress using the Detailed Employer's requirements, room data sheets and drawings produced by Frankham's Architects, Building Services Engineers and Structural Engineers on a JCT Design & Build contract, with Hounslow retaining Frankham as technical advisor through to completion of the scheme.



Cllr Peter Thompson, leader of the council, said, "By combining residential, extra care and day care, we will pave the way for a much more integrated approach to housing, social care and health for older people in the community."

GREENHILL HOUSE

Works were recently completed on the internal refurbishment of Greenhill House, the HQ of the Defence Academy UK.

The original Sandhurst building had undergone numerous disparate modifications over the years. Works involved significant structural re-modelling, installation of two lifts, new structured cabling, Comms and NER rooms, fire detection, emergency lighting, alterations to power, heating, ventilation and drainage systems, DDA improvements and general refurbishment works to provide a modern office environment.

Despite the majority of the works being undertaken in occupation, the project was delivered on time and under budget at just over £1.5m. As a result of the successful project, our clients were awarded two official commendations from the Director General for their achievements, which reflected the efforts of the entire project team.



EALING DECENT HOMES 2009-2011

Acting as client representative, cost, quality control and CDM Coordinators, we are now entering the second and final year of helping Ealing Homes to meet their Decent Homes Target. The project involves internal and external fabric repairs and renewals across disparate property types from traditional family homes to high rise flats. The team continues to receive extremely high levels of client and customer satisfaction and has seen our budget allocation increase from £10m in 2009/10 to £23m in 2010/11.



RHODES HOUSE

Rhodes House is a prestigious listed building in the centre of Oxford, completed in 1928.

The building is currently in full occupation by the Rhodes Scholars, and houses archive storage for the Bodleian Library as well as providing a venue for corporate events and weddings.

Frankham has carried out a full condition survey and report upon the building fabric, mechanical and electrical service installations, with a view to the preparation of a 10-15 year maintenance plan. Ongoing maintenance advice and support with regard to asset management, space utilisation, statutory compliance, accessibility requirements, cost advice for budgetary control, repair and maintenance planning have also been provided.



DORCHESTER SAILING CLUB

The club house accommodates an entrance lobby, male/female and disabled changing facilities, briefing room and training room facilities. The briefing room and training areas have fully glazed doors which allow an uninterrupted view of the adjacent lake. The client opted to install a lake source heat pump to generate heat for the under floor heating system, which is a highly sustainable solution to the club house heating requirement.

Frankham has provided full architectural services for this project which was completed in September of 2009 and is now fully functional as a sailing club.



CHURCH STREET, TWICKENHAM

Above Langton's bookshop in an old street, just off the High Street in Twickenham, is a small flat built about 250 years ago that requires updating.

Architect, Derek Gillingwater, was engaged to re-design the flat and Frankham inspected the property and architect drawings to prepare calculations, detail drawings and a specification.

The building is traditional construction, load bearing, brickwork walls, timber floors, roof and studwork partitions. The second floor ceiling is to be raised and this affects the structure of the roof. Our calculations were carried out in some detail to be able to assess the effects of this change on the building.

The valley gutter between the front and rear roofs has leaked and led to timbers becoming rotten. The roofs are to be stripped, repairs carried out and re-tiled. They will then be insulated to modern standards and the flat fitted out to create a desirable residence.

The original builders used beams and joists that they knew would work – in 44a Church Street most timbers were strong enough to modern standards and only a few needed enhancing.

It is now at tender stage and it is hoped that work will start on site imminently.



“ Pairs of large oak beams run through the length of the building with oak floor joists tenoned into the beams. ”

BLUEBELL RAILWAY'S 'OPERATION UNDERCOVER' - A TEAM EFFORT

Bluebell Railway's 'Operation Undercover' has been a marathon project, from inception almost a decade ago, to locating a site, obtaining lottery funding and developing architectural detailing from a few old photographs. Frankham's Haywards Heath office was appointed to assist and after a detailed planning application and complicated ecological issues, the project is now under construction with a grant from the Heritage Lottery Fund and is due for completion before the end of the year.

The Bluebell Railway was the first standard gauge passenger railway to be preserved in Britain and is one of the largest tourist attractions in Sussex. Operation Undercover is an ongoing project to get the vintage carriages undercover, to protect them from the elements.

Having established the volunteer team's requirements, we set out buildings to steam railway standards, developed detailed proposals and overcame ecological and site constraints. As construction is now underway, Frankham is working closely with Bluebell Railway and Morgan Ashurst ensuring construction work does not affect the public interface of the railway and the daily running of the trains.

The project has had many challenges, but the commitment and enthusiasm shown by volunteers has been infectious and our team is devoted to the project. We will continue until the vintage carriages are tucked away and the steam trains are again running into both platforms at Sheffield Park.





LIFE

RICS LICENCED ASSESSORS

As part of Frankham's continuing commitment to the development and training of younger (in most cases !!) staff members, John Murray and Graham Fryatt are both now RICS Licensed Assessors for Building Surveying and Quantity Surveying respectively.

John and Graham, along with several colleagues, have been involved with a recent series of Mock APC panels set up by John Roberts, a longstanding APC assessor, to help prepare candidates for the real thing.

Feedback from previous years is that the 'Mocks' have been just as daunting as the actual panel !!

If any clients feel they, or members of their staff, could benefit from such preparation for their RICS APC panels, please do not hesitate to contact **John Roberts, John Murray or Graham Fryatt on 020 8309 7777.**



BRINGING IMAGES TO LIFE

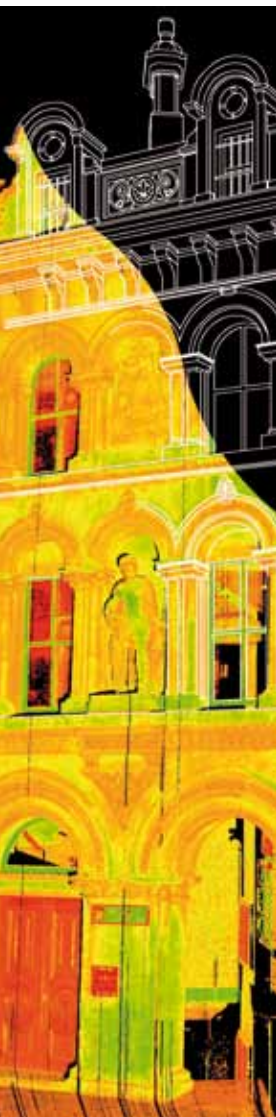
Frankham has recently invested in a state of the art **Leica C10 Laser Scanner** for use by the Land Surveying Division.

Laser scanning creates highly accurate digital data efficiently and quickly in 3D. The data can be used in its raw state, called point cloud data, to provide 3D measurements. In addition, photos can be taken and wrapped over the data to produce a 'true view' model that can be interrogated by surveyors, engineers and clients. With a range of up to 300m and the ability to record data without the need to place a target on your subject, the scanner is ideal for surveying difficult-to-access locations. We also welcome Tim Beach to Frankham, who has been involved in laser scanning since the early days of its introduction to the UK. Tim is an expert in capturing data on site and converting it to the clients' needs.

Using the laser scanner, we can produce elevations, floor plans, reflected ceiling plans, cross-sections, 3D CAD models and walk-throughs more quickly and with greater detail than can be achieved solely by using conventional surveying techniques.

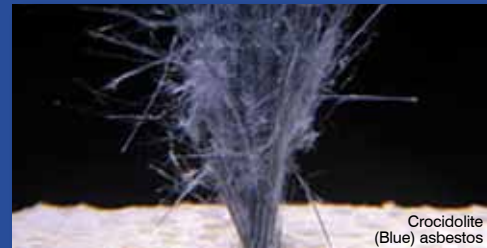
Laser scanning is now used in many sectors including Rail, Police & Forensics, Property, Engineering, Retail, Education and Health.

For further details please contact
Anton Ricks e:anton.ricks@frankham.com or
Phil Wright e:phil.wright@frankham.com



ASBESTOS

Frankham Risk Management Services is now able to offer additional asbestos services including undertaking asbestos surveys, sampling, re-inspection and advice on remedial works method statements.



The issue of new guidance documentation – HSG 264 (Asbestos: The Survey Guide), has resulted in a number of changes in the way asbestos surveys are planned and carried out.

As a group, we can now offer our clients asbestos surveys in accordance to this new guidance, as well as other asbestos related services such as advice on remediation, awareness training and asbestos management plans. We have highly qualified and experienced staff on hand to assist, a track record in providing these services to all sectors and specific insurance cover in place.

Any queries should be forwarded to **Rob Turley e:robert.turley@frankham-rms.com** or **Tom Byers e:tom.byers@frankham-rms.com**

A MAJOR CHANGE IN STRUCTURAL AND CIVIL ENGINEERING

BSI codes were withdrawn on the 1st April 2010 so all publicly funded projects with a tender issue post this date require the use of EuroCodes. Updated Section B 50 of NBS specifications covers many of the new requirements. Building Regulations have issued advisory letters confirming their acceptance.

Frankham has been planning for this change since the first part of the EuroCodes was issued in 2002 to the last part being issued on 31st March 2010. We have updated all of our design software, and associated technical training is complete.

Not all companies, however, are so well prepared with over half of engineers stating in a recent survey they were not in a position to undertake designs in accordance with the EuroCodes.

For further information contact
Chris Gibbs e: chris.gibbs@frankham.com

NEW CONSTRUCTION ACT INFORMATIVE

A new Construction Act is being implemented in 2011 which replaces the construction aspects of the Housing Grants, Construction and Regeneration Act 1996.

The amendments will affect two main areas of adjudication and payment:

1) Adjudication, in summary:

- It removes the requirement for a construction contract to be in writing (relevant mostly for very small works) except the adjudication provisions, which must still be in writing.
- It introduces statutory slip rule for adjudicators' decisions allowing adjudicators to correct minor errors in their decisions.
- It allows parties' right to agree who pays the costs of the adjudication later. Previously, whoever made the claim must pay both parties costs, irrelevant of outcome.

2) The payment amendments will have the following effects:

- To prohibit 'pay-when-certified' clauses so a main contractor cannot make payment to a subcontractor dependent on their own payment being certified by the employer.
- The introduction of new rules on payment and withholding notices, more in favour of the payee.

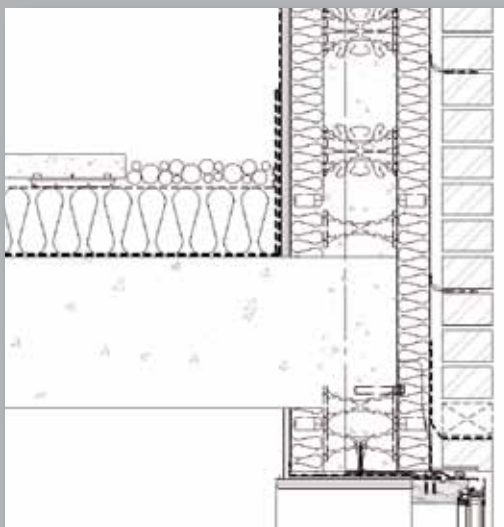
Any standard forms of agreement or bespoke documents will need to be amended by legal teams to reflect these changes. This will include the above but more simple changes such as terminology will also have to be amended.

For further information contact
Ian Webb, Head of Quantity Surveying
e:ian.webb@frankham.com

BLOCK W-NUDURA DESIGNING INNOVATION INTO CONSTRUCTION

Frankham, alongside Apollo Education and LB Haringey, is developing the detailed design scheme for Woodside Inclusive Learning Campus, an inclusive school for 1200 pupils.

Construction of the SEN Block will commence at the end of July, making Woodside ILC the first School in Europe to be constructed using the NUDURA® 'Insulated Concrete Form' (ICF) wall system. It is an innovative new wall system which offers significant benefits in terms of low carbon construction,



together with reduced time and labour on site. It is used widely across the US and Canada and we are working closely with NUDURA® and their CAD team in Ontario, to develop the bespoke details required for the construction of this specialist block.

We have now been appointed to develop detailed design proposals for a further Arts block which will also use the NUDURA® ICF wall system, replacing one of the existing buildings which was due to be refurbished, removing the need for temporary accommodation.

The ICF wall comprises two parallel layers of expanded polystyrene (EPS) foam, joined by HDPP plastic hinged, foldable web fastening clips. The core is filled with in-situ concrete which bonds itself to continuous moulded recesses on the inner faces of the foam. Once cured, the wall becomes monolithic and the foam layers provide the necessary insulation element to the wall.

The exterior of the wall in this case is to be clad in brick and internally, a standard 12.5mm gypsum based wallboard can be direct-fixed through to the fixing flanges, using standard dry-wall screws.

Owing to the self-sealing nature of the cast product, and that it is constructed of forms which will not absorb moisture; the product requires no further external sealing or water-proofing (assuming no below-ground installations), and, therefore, its face is self-finished in that respect.

To aid the programme, the windows can be installed prior to the external brickwork trades, and these are sealed back to the NUDURA® system, thus providing a fully weather-sealed façade, and removing the brickwork element from the critical path – a pattern likened to that of timber-framing principles.



DENNIS WISE IN THE COMMUNITY: TEN YEARS & HALF A MILLION POUNDS RAISED

To the delight of Dennis Wise, Steve Frankham and staff at Frankham another milestone was reached at the Fundraising Valentine's Ball held at the Grosvenor House Hotel, on 14th February 2010. Despite the tough times we have been experiencing we managed to raise just under £60,000, making the total raised to date half a million pounds.

The evening was hosted by the very talented Mike Osman, with performances by Olivia & Rebecca who boast stunning soprano and mezzo-soprano voices.

Dennis Wise in the Community was formed in 2000 by Steve Frankham and Dennis Wise with the aim of providing much needed support to their local communities. Listed below are some of the organisations for whom we have been proud to raise money on a regular basis.

- Parkwood Hall School (residential/day special school) Steel Band.
- Marlborough School – For children who have severe, multiple and profound disabilities.
- Northlands Multiple Sclerosis Society - A day centre for MS sufferers.
- Bromley Autistic Trust – Improving the quality of life of people of all ages with ASD.
- Threshers Day Nursery – Provides regular meals, clothing, and opportunities to learn and play.
- Help for Heroes – Support for our wounded.
- Demelza House - Provides one-to-one care with a team of highly skilled care team members, which include palliative care nurses and assistants.
- Chalfont St Peter Football Club.

Dennis Wise in the Community and Frankham support other worthy causes and are proud to have helped the following in the past few months:

A donation was made to help a young boy who suffers from the rare and serious Y-strain meningococcal septicaemia, which has resulted in the loss of both his legs and also his arms below the elbows.

An armchair that has special supports was purchased for a bubbly, happy, little five year old with congenital Rett syndrome, who cannot walk, talk, use her hands or eat. The armchair was needed to prevent her spine from deteriorating whilst providing her with pressure relief and comfort.

A donation was made to a little, seven year old girl who was born with diplegia cerebral palsy which causes her to walk on tiptoe as she cannot put her feet flat on the floor. The money donated will go towards an operation she will be undergoing in St Louis Children's Hospital, Missouri.

A sunshine coach has been purchased for a Kent based school which caters for 126 pupils aged 4-19 years with severe learning and physical difficulties, sensory impairment, epilepsy and autism.

We are organising another Fundraising Lunch which is being held at Oakley House Bromley on 5th November 2010. If you would like further information please do not hesitate to contact Pat Saville on 020 8309 7777.

CHARITY MATTERS

The Frankham team is proactive about giving back to the community. In addition to corporate initiatives, individual fundraising efforts are widespread throughout the Group and we are lucky to have great staff members who are so active. Here are just some of the examples of staff going that extra mile:

Becky Bosman – PA to Group Managing Director

Becky was brave enough to take part in a sponsored skydive in aid of Great Ormond Street with her group raising approximately £4,000 for the worthy charity.

Tracey Mardell – Tenant Liaison Officer

Tracey recently took part in her local Race for Life jogging round the 5k course at the O2 raising £186 for Cancer Research UK.

Inspired by recent sad losses, Tracey was determined to raise as much money as she could.

FCG Oxford

Following completion of the new Acute Day Treatment Unit (ADTU) at Watford General Hospital, Frankham has donated £500 towards the new garden to be used by those individuals who will access the ADTU service.

The money was raised from Frankham's fundraising vehicle, Dennis Wise in the Community. A pilot scheme for the Trust, the ADTU offers clinical and therapeutic outpatient services to those experiencing an acute phase of mental ill health. The challenge was to give this innovative service a safe environment, with a non-clinical feel, within the constraints of an existing building.

Ray Glew (and his trusted friend, Brecon) – Associate Building Surveyor (Ray, not the dog)

Ray and his trusty dog, Brecon, recently took part in a sponsored 13 mile walk in aid of De Stafford Kenya Fund/Habitat for Humanity. This charity raises money to build much-needed homes and schools for families in Kenya. The walk raised approximately £450. Ray has been raising funds for the schools since a visit to Kenya in 2001.

Latest.....

On the 6th June 2010, Ben Turner pedalled his way through the Burgess Hill area for charity. Half of funds raised went to St. Peter & St. James Hospice, the remainder to local worthy causes. The joint organisers were Burgess Hill, Haywards Heath & District Round Table and Burgess Hill District Lions Club. Well done, Ben.

James Mitchell, Adam Powrie, James Clements and Ian Scott took part in the London to Brighton bike ride on the 20th June 2010 in support of The British Heart Foundation. The team proudly displayed the Frankham colours.

fr LIFE





HAYWARDS HEATH OPENING

We were very pleased to welcome a wide selection of clients and local businesses to the opening of our new office at 21 Perrymount Road in Haywards Heath, Sussex. Local Authority, Educational, Health and Private sector clients were well represented.

We also took the opportunity to showcase our Leica Laser Scanner (see page 6) via demonstrations throughout the evening, which proved to be very popular.

Frankham has been present in Haywards Heath for five years and this relocation to larger premises has developed into a central hub for our projects in Sussex, Surrey and Hampshire, providing Frankham with closer links to many of our major clients, allowing us to provide an improved service.

OXFORD COUNTY COUNCIL: FRAMEWORK SUCCESS

Frankham's Oxford office is delighted to announce it has been appointed to the Oxfordshire County Council Capital Projects Consultants Framework commencing 1st April 2010 for a period of four years.

Oxfordshire County Council have a substantial Capital Building Programme and additionally other Local Authorities, Councils and Housing Associations are able to use this contract to procure consultancy services. We shall be providing full multi-disciplinary services: Lead Consultancy, Architecture, Project Management, Structural Engineering, M&E Services, Engineering, Building Surveying, CDM Coordinator and Quantity Surveying. To add further strength and depth to our appointment, we have formed a collaborative local partnership with Provelio, Gifford & TSH Architects to provide a high quality service and delivery of schools, cultural and civic buildings and the commercial property of Oxfordshire County Council.



FRAMEWORK SUCCESS

Frankham's Oxford office has been successful in securing sole provider status for Oxford and Buckinghamshire MHT's new construction services frameworks in its consortium with SMC Facilitas.

The CDMC team has secured its first framework commission with multi-national company, SERCO, and has also been appointed to a new £10M waste transfer facility in Sandwell, Birmingham.

Frankham has been busy in the Housing market, securing positions on Peabody's M&E consultant, Sentinel HA Employer's agent, One Housing CDMC and Brent Housing Partnership's multi-disciplinary frameworks.

The low cost carbon and environmental teams have been appointed to Suffolk CC's new framework.

Well done to all the teams!

QUALIFICATIONS

Stuart Nagle has successfully completed the Association for Project Safety (APS) examination and is now a Registered CDM Coordinator – Feb 2010.

The Executive Board of Directors is pleased to announce the appointment of **Pat Saville** as Director of Pro-Link Europe Limited. This appointment is in recognition of Pat's contribution to the business since joining in 1993.

Laura Pearce has passed her BREEAM Education 2008 Assessor course and is now a registered BREEAM Assessor. This means the Environmental Section now has three registered BREEAM Assessors.

Congratulations to **Brian Gallagher, David Wilson** and **Ian Scott** for achieving their memberships of the Royal Institution of Chartered Surveyors. This reflects the hard work they have put into realising their goal and the support given to candidates by Frankham in encouraging staff in progressing their careers.

Frankham Continue to Strengthen the Management Team

Phil Wright. MRICS, MAPM – Divisional Director

Phil, a former director of a leading geomatics company, is developing our Topo, Health & Safety and CDC-C teams and the Central London office. Phil brings a wealth of leadership and management skills to the business.

Alastair Smyth. CEng MStructE – Head of Engineering

Alastair, a chartered Civil and Structural Engineer, is supporting Chris Gibbs in strengthening our Engineering Division. An experienced design engineer, he also brings management and commercial experience to the team.

Ian Webb. MRICS – Head of PM, EA & QS

Ian is heading up our Project Management, Employer's Agent and Quantity Surveying team in Sidcup. Ian brings 20 years experience in consultancy and owner-occupier organisations in both the UK and internationally.

LIFE 



CELEBRATING EMPLOYER ENGAGEMENT 2010 AWARD

As part of our Corporate Social Responsibility commitment, Frankham takes a dozen or so students for Work Experience each year and have done so for at least 10 years.

The opportunity to give something back to the local community is important, as most of the students are from local schools.

Frankham is also investing in the future of the numerous disciplines within the Group by introducing the next generation of Architects, Engineers, Surveyors, IT Technicians, Administrators etc. to the world of work.



It is exciting to see the enthusiasm and optimism of the students and good to know that Frankham has the resources available to be able to offer an insight into a successful business with talented staff.

Frankham has been awarded a 'Celebrating Employer Engagement 2010' certificate by Bexley Education Business Partnership in

recognition of the support given to Work Experience in Bexley.

The certificate was awarded by the Mayor of Bexley to Jo Neale and Richard Sheehan at a special lunch at Bexley Civic Centre.

The catering for the lunch was prepared by local students and the IT presentations, event administration and set up were all conducted by local students.

It is always nice to receive a 'Thank You' and have good service acknowledged. Without organisations getting involved, school careers departments would struggle with an important part of student development. Frankham would encourage all of our clients, customers and partners in the supply chain to get involved with Work Experience.

Richard Sheehan
Personnel Manager

PAT SAVILLE Pro-Link Director



1) Congratulations on becoming Director of Pro-Link. What's new for Pro-Link in 2010?

Pro-Link is undergoing a rebranding. We currently have the Pro-Link website under construction which will make it more user-friendly.

It is our intention to grow the business this year; we are currently in negotiations with a very experienced consultant who we hope will come on board in the near future.

Pro-Link has joined the REC (Recruitment & Employment Confederation) as a Corporate Member. This, we feel, will enhance our credibility in the market place. The most valuable part of our REC membership is the assurance to our clients, candidates and staff that we live up to the highest standards of best practice in recruitment. The REC also ensures that we are adhering to standards and that we are doing things correctly and complying with the relevant legislation which helps to reduce business risk.

In October, Pro-Link will celebrate the birth of a baby to a member of staff. This is a first.

We continue to forge new relationships with large clients.

2) What do you enjoy most about your role?

I work with a fantastically successful team who contribute 110% to making the business succeed. Fulfilling clients' requirements gives us all a great boost as well as exceeding our budget.

3) What do you envisage the employment trends to be in 2010?

I believe there will be a lot more emphasis on Health & Safety, Compliance, Risk, Maintenance and Infrastructure.

4) What is your biggest achievement to date?

My biggest achievement is becoming a Director of Pro-Link.

5) Name your 3 favourite foods?

Italian

Indian

Chinese

And a lovely cup of YORKSHIRE TEA

6) If you could do anything or wish for anything that would come true, what would you wish for?

I would wish for the economic climate to stabilise, this will ensure a future for everyone in the country. If you would like a selfish answer it would be 38 – 22 – 34 (perfect).

ED MCGEEHIN

Senior Architect



1) What inspired you to become an Architect?

Desire to leave my mark in the built environment and to improve people's lives through those marks.

2) What is your favourite project to date and why?

My favourite projects are always my current projects as I enjoy the design and problem solving stages of schemes.

3) How would others describe you?

That bloke with the funny hair.

4) Which is your favourite part of the human face and why?

Corny I know, but has to be the eyes because they are beautiful!

5) Have you adapted your house or life style to be environmentally friendly?

In process of installing solar panels and upgrading thermal envelope of my current house. Have changed the car to a lower carbon Class B car, also starting to cycle to work. Have lots of raised beds full of fresh, home grown vegetables and fruit, and our own chickens for fresh eggs all with tiny carbon footprints.

Frankham Look-a-likes



Richard Chitty
Frankham Consultancy M.D.



William Hague
Foreign Secretary

Similarities

Height: Same

Hairstyle: Same

Sense of Humour: Same (great)

Partners: Both have lovely blonde wives

Richard's comments;

"There may be similarities but I'm obviously younger and better looking, even though he is benefiting from professional photography. Also, being harsh, William Hague is a failed leader as only 2nd Tory leader to not become PM. So if he needs any advice, my door's always open plus my rates as a stand-in are reasonable."

AWARD NOMINATION: DARTFORD GREENHEART

Frankham was commissioned by Dartford Borough Council to design a new pedestrian and cycle link through Central Park, a major recreation space in the heart of Dartford's town centre.

The scheme comprised the construction of a new engineered embankment from Darenth Road to the playing field 'plateau', a 3.5m drop. The sloping footway that drops down to the river bank required a 6.0m drop over 150m, and two 20m single span steel bridges were created which carry the link over two river channels. A new retro styled bandstand with the associated footway extensions was also created.

The design utilised many of Frankham's multi-disciplinary design services: Civil and Structural Engineering, Architecture, Mechanical and Electrical, Quantity Surveying, CDMC. Our team worked closely with the client's Project Manager, Mr Tony Phillips, to ensure that the client's dream was turned into a reality!

We are pleased to announce that this scheme has been shortlisted in this year's Institution of Civil Engineers Engineering Excellence Awards.

Frankham Look-a-likes



John Higgins
Frankham Consultancy
Regional Director



Fabio Capello
England Manager

Similarities

Height: John is at least 3" taller

Hairstyle: Same

Sense of Humour: John has one

Partners: Both married to Italian ladies

Were you prepared for the World Cup?

Fabio: I wasa butta I ama notta sure about da boys!

JH: Being a Leyton Orient supporter, I am used to disappointment, but I do think the 'Os' could have done better than England.

Fabio, were the team tactics wrong?

Fabio: To winna da Cup we musta scora da goals and be betta than da resta. The boys dida not listen to Fabio.

JH: Maybe there should have been some Leyton Orient players in the team?

Fabio, what went wrong?

Fabio: Da boysa dida nota eat dare pasta. They dida do una thing I askda – thata was to playa lika de Italians!

JH: A number of things!

- Too long a season
- No winter break
- Lack of belief
- Lack of competence
- Poor Management!

I do however believe we have the quality in the players but we are not getting them to perform. We now have the European Cup.

.....come on England!

SHARE YOUR IDEAS

If you have any ideas to help us progress
please let us know, your views matter.

Irene House, Five Arches Business Estate,
Maidstone Road, Sidcup, Kent, DA14 5AE
T:020 8309 7777 F:020 8309 7890

Frankham House, Wootton Business Park,
Wootton, Abingdon, Oxfordshire, OX13 6FD
T:01865 322 500 F:01865 327 393

21 Perrymount Road, Haywards Heath,
West Sussex, RH16 3BW
T:01444 444 900 F:01444 455 642

Neckinger Mills, 162-164 Abbey Street,
London, SE1 2AN
T:020 7237 3210 F:020 7237 3136

E:enquire@frankham.com

www.frankham.com



Chalfont St Peter Albion Football Club

Frankham Projects, our specialist development consultancy, has been appointed to work up proposals for the provision of new stadium and training facilities at Chalfont St Peter AFC.

The club provides a unique role within the community, using football as a way of encouraging people to keep fit, learn new employment skills and reduce crime in the local area, as well as running a range of football clubs.

As with most community facilities, the club struggles to maintain existing buildings and receives little funding from external bodies.

Frankham Projects was appointed to identify areas to improve revenue generation and to reduce the capital burden of construction cost through innovative development funding and possible grant funding options.

Design proposals have been prepared in close consultation with the club and key stakeholders. They show the club expanding its facilities to become accessible to the whole community, progressing through the football league system, with the goal of becoming a successful and financially viable community football club.

A life cycle costing exercise has been examined at an early stage and sustainable measures have been included to help reduce running costs. A planning application is due to be submitted shortly.

To discuss how Frankham Projects might be able to add value to developments or important community facilities, please contact:

frankhamprojects@frankham.com.

Dennis Wise in the Community & Frankham

supports regular and one-off worthy causes and we are organising another Fundraising Lunch at Oakley House Bromley on 5th November 2010. If you would like further information please do not hesitate to contact:

Pat Saville on 020 8309 7777.



FRANKHAM