

JUNE/JULY 2009

LIFE IS THE NEWSLETTER OF
FRANKHAM CONSULTANCY GROUP

6

3

TRAM REGENERATION



4

LARA DENNISON - BUILDING SURVEYOR



5

WORK SUCCESS

7

EASTBURY PRIMARY SCHOOL

8

FRANKHAM IN DEFENCE



10

RIDHAM DOCK



11

BOUNDARY WALL



A WINDOW ON THE WORLD OF FRANKHAM



FRANKHAM WIN AMBASSADORS' BLUE RIBAND AT THE
LONDON EXCELLENCE AWARDS 2009

VALENTINA TWO

Rubbing shoulders with celebs:
Sky's Matt Lorenzo explains all

EDUCATION SPECIAL

Focus on Frankham's programme
of education projects

No.1 IN SAFETY

Frankham hitting the top spots in
rail health & safety management

NEW HSEQ TEAM

Meet Frankham's new team



FRANKHAM

OUR ORDER BOOK IS AS HEALTHY AS EVER, SO, OUR MAIN FOCUS WILL ONCE AGAIN BE IN DELIVERY AND EXCEEDING OUR CLIENTS' EXPECTATIONS.

TAKE STOCK & REFLECT

Since the Christmas edition of Life magazine, we have really moved on a long way. Having restructured part of the business, we also revisited our business plans and it is pleasing to say that the outcome is that our focus, diversity of disciplines and client base are seeing us through these tough and volatile times.

We have all worked extremely hard and have continued to win new frameworks such as **Go-Ahead, Warwickshire Police Authority, London Borough of Sutton, Kent County Council** and **Ealing Homes' Decent Homes Programme**. We have also been commissioned for another **£18 million SEN School project** along with numerous other education schemes. In addition, our maritime engineers are appointed onto the **SEEDA framework**.

The health sector continues to bring in opportunities, as does housing and transport. We have also seen our share of defence works blossom and we continue to develop relationships in the Middle East.

Our software company '**CAMSoft**' has also continued to grow; the flexibility of this compliance source has allowed our clients to tailor their needs in this ever increasing world of governance. The increasing demands on our clients to demonstrate economic, efficient and effective service delivery, and for greater accountability and transparency in their processes, have created a need for a more holistic and integrated technology solution. In response to these needs, we have now expanded our software compliance solution, **CAMeRA**, into other related business areas.

Here at Frankham, life goes on. Our fee forecasts have in fact exceeded our predictions and our order book is as healthy as ever, so, our main focus will once again be on delivery and exceeding our clients' expectations.

As always, it's important that our clients play their part in the recovery of our economy. Harsh payment terms and the lack of cash flow, for whatever reason, will only hurt the heart and soul of any business. As we have said time and time again, cash is the life blood of any company. If there are any issues, let us address them together and act upon them sooner, rather than later.

Well, summer is here and how we need a little more sunshine in our lives. It was really refreshing news to hear that **Tanju Ariyananda** from our Oxford office has gained her **Part III Architectural qualification**, **Stuart Macmillan** and **Johanna Jarvinen** have become **Healthcare BREEAM Assessors**. We continue to develop and invest in our people and are seeing the benefits they bring.

I would also like to take this opportunity to thank those of you who have supported our fundraising events, times are tough but the generosity of so many of our friends, staff, clients and supply chain has been overwhelming.

Finally, we thank you all for your continued support and feedback. Have a great summer.

Steve Frankham
Chairman



DORCHESTER BOAT HOUSE

For as long as most members of the Dorchester Sailing Club can remember it has struggled with its outdated clubhouse, which was originally constructed to house weighbridge machinery and to serve as a workers mess hut, as it was once a gravel quarry.

Recognising the need to renew the existing clubhouse with a purpose-built replacement, Frankham's Architects created the solution, which, consists of changing and shower facilities, toilets, kitchen, dining and social area, disabled facilities and a club and training room with a hearing loop.

Sailing has taken place on Dorchester Lagoon since around 1958. The Club has been home to many, including local sailing associations, cub and scout troops, Oxford Polytechnic and holiday operators, not to mention nature enthusiasts.

DID YOU KNOW

That Frankham Consultancy Group has always been at the forefront when it comes to raising money for worthy causes in the local community. In fact, over the last nine years we have raised £397,096 which has provided much needed support to the following benefactors;

- *Parkwood School*
- *Northlands Multiple Sclerosis Society*
- *Threshers Day Nursey*
- *OLMEC Charitable Trust*
- *Marlborough School*
- *Bromley Autistic Trust*
- *Demelza House*

Even though Frankham are under no illusions with regard to the economy and the difficulties we are all facing, we do not see that as an excuse for us all not to have a good time at the fundraising functions. These are not only full of entertainment but, more importantly, raise a few pounds for these worthy causes.

If you would like any information on the events we organise, please contact **pat.saville@frankham.com**



LONDON TRAM REGENERATION

Since TfL acquired London Trams, the decision was made to refresh the rolling stock. The fleet comprises 24 cars all of which were refreshed during a seven day period. This required four separate contractors to work in close liaison with each other with most of the work being undertaken at night.



The four separate contractors had their own individual roles to play. Halo, undertook work on the trams' body-work, Chicago worked on the damaged/graffitied windows, Bombardier took care of any mechanical problems, whilst ISS carried out the domestic cleaning of the carriages.



Without Frankham acting as Clerk of Works and Supervisor, it is likely that communication between the contractors would not have been as cohesive and the partnership would not have been as effective to finish the job within six months and to budget.



VALENTINA TWO

It could be something to do with waking up early. Restaurateur, Bruno Zoccola, has spent most of his working life getting up at half two in the morning to run his business at Smithfield Market. Across town, TV presenter, Matthew Lorenzo, was comparatively lazy, rising at 4.30am to host GMTV and then the Sky Sports News breakfast show.

The two are second generation Italians, from neighbouring parts of southern Italy. Until this year they'd never met. But when they did, they found they had plenty more in common. Bruno was building a new restaurant and Matt was looking for a venue for his new TV show.

It was a marriage made somewhere south of Rome. Valentina Two, Bruno's second restaurant, was due to open in time for the last game of the football season at a brand new site in East Putney, conveniently next door to the tube station. Lorenzo had been producing and presenting 'Off the Bar', a Premier League preview show with a difference, in various pubs around South West London. He needed a permanent home for the programme which brings in guest stars, footballers and bookies to discuss football matters in a decidedly laid back atmosphere. The new restaurant would hopefully provide a sophisticated yet friendly back drop.



"I decided to open Valentina Two. We looked at various sites and decided the East Putney venue had the most potential. I sat down with Steve Frankham and his guys, Sensum the shopfitters and Iain Baker. Between us we designed the project from the ground up. I'm grateful to Steve for his advice and expertise and I think we made a pretty good job of it."

'Pretty good' doesn't do justice to the finished article, which combines a deli, coffee shop, spuntino bar (the Italian version of tapas) and full scale restaurant upstairs.

Bruno has spared little expense. From fixtures and fittings to the two Fiat 500s on the terrace – one old, one new, and some engineering ingenuity from Frankham to enable a Vespa and sidecar to hang from the ceiling.

It's the sort of backdrop which gives the Off the Bar a smart new feel. More than a hundred guests were at Valentina Two to watch the filming of the last show of this season.

Lorenzo said *"I think it's safe to say Off the Bar has found its new home. We'll have no trouble inviting guests and celebrities alike to a venue like this."*

LIFE



“ I THINK IT'S SAFE TO SAY OFF THE BAR HAS FOUND ITS NEW HOME. WE'LL HAVE NO TROUBLE INVITING GUESTS AND CELEBRITIES ALIKE TO A VENUE LIKE THIS. ”



FRANKHAM INFECTION CONTROL



LARA
DENNISON

Lara has worked in our Haywards Heath Office for the past two years as a Building Surveyor. This has included working on some of our major projects, for clients such as **Telereal, East Sussex County Council, South East Coast Ambulance Service NHS Trust**, to name but a few. Her role entails the production of CAD drawings, schedules of work/specification writing, condition surveys, contract administration and CDM-Coordination.

Frankham has been performing a number of refurbishments at various health centres including the upgrading of current facilities and the replacement/renewal of sluice rooms. For patients, this means care in a more modern environment and, for NHS staff, this will allow for ease of cleaning and infection control.

The key drivers of our service are **patient care, communication with patients and patients' families, being sensitive to phased decanting and planning schedules, understanding and sharing staff aims, plus detailed attention to technical delivery.**



Our clients include: **Oxford and Buckinghamshire Mental Health Trust, Oxfordshire Primary Care Trust, Oxford University, Homerton University Hospital, Reading University and St. Thomas' Hospital, London.**

We are one of only seven consultants on the **Department of Health Framework** for both Construction Related Consultant and Technical Advisor services covering the United Kingdom. The framework can be used by any Department, Trust or PCT without going through OJEU procedures for the appointment of consultancy services.

The scope of the work and phasing has been determined through very close consultation with the following PCT advisors:

- *Infection Control Nurses*
- *Heads of Service*
- *PCT Estates Department*

PHASING:

The works have to be phased as to ensure that there is not a reduction in bed numbers across the priority one sites.

DECANTING:

Decanting of beds to an alternative site will be required. Therefore, a detailed programme has been agreed that will allow adequate staff consultation and relocation only of those staff that are able to travel to the alternative site.

CONSULTATION:

The Construction Team will interact very closely with the PCT and Modern Matrons to ensure that the NHS staff are kept fully informed. The Construction Team welcomes input from NHS staff and the aim is to develop a relationship of trust and mutual respect.

1. Describe a standard day at Frankham?

Answering a few emails, writing a specification, doing a site inspection, completing a drawing, attending a briefing meeting, etc. etc.

2. If you were PM for a day what would change?

I would increase the number of statutory holidays and provide a weekly allowance of wine and crisps for all adults.

3. What's your proudest/best project to date?

The first project I managed on my own – a BT roofing project.

4. What was the last film you saw?

Slumdog Millionaire.

5. Does Alan Ranger ever smile?

Yes frequently, most often after a glass of wine, or before a forthcoming holiday.

6. What's the worst thing about your job?

That's a hard one, but I wish my computer was a bit faster.

7. Where's your next holiday destination?

Maderia, Portugal.

8. What flavour of crisp would you be?

Prawn Cocktail

9. If you could be anything else what would it be?

An Olympic Athlete or a Pop Singer. However at 4ft 11ins and being tone deaf there is little chance of either!

10. How has the economic downturn affected you?

My mortgage has reduced

11. What inspired you to become a Building Surveyor?

Every building is fascinating and unique, every day is different, and there are always new things to learn.

12. What's the one thing that stands out for you about Frankham?

The people





5
JUNE/JULY 2009

WORK SUCCESS

LIFE 

GREENWICH HIGH ROAD

Our client, London and Quadrant Housing Trust, has agreed to purchase 112 new build flats and have appointed Frankham to act as their Employer's Agent to oversee the £10 million Design and Build Contract. The flats, which form part of a much larger 'Section 106' mixed use development, will consist of a hotel, commercial space and private residential units close to the heart of Greenwich.

The project will achieve 'Code for Sustainable Homes Level 3' and, therefore, has several ecological features, including improved thermal insulation and water saving fixtures and fittings. The scheme will also use pre-fabricated bathroom pods to cut construction time, reduce waste and improve the overall quality. Planning permission also requires that 10% of the energy consumption on site is obtained from renewable sources. The first units will be ready in September 2010.

MARSTON WAY

Following a fire which completely destroyed a block of flats in 2007, we were appointed by the London Borough of Croydon to provide full multi-disciplinary services for the reinstatement of the block.

On consultation with Croydon's Planning Department, it became apparent that the new block of flats would need to be of a similar size and scale as before, but also comply with the Code for Sustainable Homes and include two disabled units.

Due to the topography of the site, limitation in the layout of the block and tight budgetary constraints, this presented a difficult challenge. However, with close liaison between all disciplines, a workable scheme has been developed which satisfies the client expectations, Planning Department and leaseholders, and will exceed the minimum criteria for Code for Sustainable Homes Level 3.

December 2008

We have been awarded the Framework Agreement for **London Borough of Lambeth** for **Quantity Surveying** and **CDM-Coordination** services.

We have been selected as **Building Surveyors** and **Structural Engineers** on a four year Framework Agreement with the **London Borough of Sutton**.

February 2009

We have been selected as **CDM-Coordinators** on the four year Framework Agreement for **Moat Homes**.

We have been appointed by **Kent County Council** on their four year Framework Agreement for the following services – **Architecture, Building Surveying, CDM Co-ordination, Quantity Surveying, Mechanical & Electrical Engineering, Project Management, Employer's Agent, Structural & Civil Engineering, Clerk of Works** and **Environmental Engineering**.

March 2009

We have been selected by **SEEDA** (South East England Development Agency) to be included on their four year Framework Agreement as **Marine Civil Engineering Consultants**.

We have been successful with **Dartford Borough Council** for their **Greenheart Project** (a major environmental and access project based in and around Central Park, Dartford). Services include **Project Management, Architecture, Structural Engineering, Marine Engineering, Mechanical & Electrical Engineering, Landscape Design, Quantity Surveying, CDM-Coordination** and **Ecological & Biodiversity Advice**.

Frankham have been appointed as **CDM-Coordinators** under the three year Framework Agreement with the **University of Westminster**.

We are delighted to confirm that we have received confirmation that the **Haywards Heath office** is now **RIBA** registered, which is a fantastic strategic step forward for the business.



QUALIFICATIONS

February 2009

Stuart Macmillan and **Johanna Jarvinen** have both passed the **BREEAM Healthcare Competent Persons Exam**, this means we will be able to undertake Healthcare Assessments.

April 2009

Congratulations **Tanju Ariyananda**, from our **Oxford office**, who received confirmation that she has passed her 'Part III' in Architecture.

June 2009

Becky Bosman, PA to the Group Operations Director, has gained her **ICB Level 1**, in Book-keeping.

WOODSIDE SCHOOL

We have been appointed by **Apollo Education** and the **London Borough of Haringey** to develop detailed design proposals and construction drawings for **Woodside Inclusive Learning Campus**, an inclusive school for 1,200 pupils.

Woodside will bring three schools together on the site of Woodside High School. William C. Harvey School for pupils with severe learning difficulties and Moselle School, a co-educational school for children with special educational needs will be joining the former and moving their 120 pupils onto the site in September 2011.

Frankham are working closely with Apollo Education to oversee a complete redevelopment of the site in order to facilitate the move. Two new buildings will be constructed to create a new 'heart' to the school incorporating the special school facilities and a SEN courtyard.

The philosophy is for all the buildings to be fully accessible to the school pupils to allow them to feel part of the Woodside community.



The main teaching block provides English, Maths, Languages and ICT Classrooms, together with Science Laboratories on the top floor and ICT Clusters in communal spaces. The building will be heated using a biomass wood pellet boiler and ventilated by a passive chimney system serving each classroom individually, to allow free air flow throughout the building.

The special school block provides specialist teaching accommodation for children with profound and multiple learning disabilities and autistic spectrum disorders together with life skills spaces and therapy spaces including hydrotherapy pool, light and dark sensory rooms, soft play and nursing/therapy support. In addition, it provides a new hall space, quiet horticultural roof terrace for growing fruit and vegetables and sports roof terrace for games. The existing buildings will be remodelled to provide a dedicated arts block for music, drama, art and design plus a new sports gym and dance studio to accompany the existing international standard running track.

The site will be completely re-landscaped to provide a central courtyard space with relaxation spaces, planting and seating, enclosed SEN courtyard with tricycle track, sensory planting and surfacing together with outdoor teaching spaces and an ecological buffer zone along the southern boundary.

ARK ACADEMY

This exciting, new academy being built in Brent, West London, is a new initiative being made possible by ARK Schools which was established in 2004 to help break the cycle of underachievement in schools in some of the UK's most challenging urban areas.

The £26 million project has Frankham appointed as CDM-Coordinator, under the Brent Framework. The academy will be open to over 1,600 students, aged from 3–18 years. The academy will also benefit from having its own sports academy, which is being funded by a major sports association. Working with Contractors Willmott Dixon and Architects Studio E, the project should be fully operational by September 2010.

HESTON SCHOOL

Under the West London Alliance, our CDM-Coordination have been appointed by the London Borough of Hounslow to provide support for the refurbishment, renovation and extension of Heston Community School. This includes a new three storey teachers' block and landscaping of the area.

The school will also benefit from the installation of a state of the art geo-thermal unit. Currently on site, we expect this project to be completed by the start of the new school year in 2011.

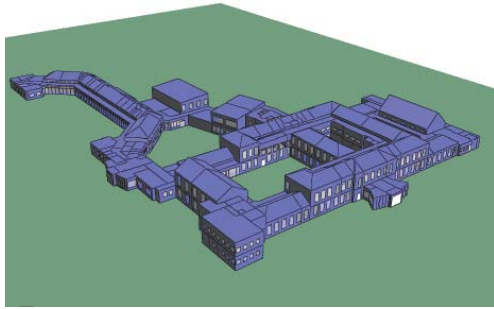
UNIVERSITY OF WESTMINSTER

We have been appointed as CDM-Coordination under a Framework Agreement with the University of Westminster. We have been successful as one of only three consultancies in the top end of the framework on projects in excess of £3 million, although we will be invited to mini-tender for works below that level by mutual agreement.

The University has a business plan to spend £120 million over the next 10 years and this framework (rolling out from September 2009) is for three years with potential for a two year extension.

EASTBURY GOING GREEN

Frankham's Mechanical & Electrical Engineers (M&E) & Low Carbon Consultants have been appointed to undertake the detailed design of a highly sustainable 21st Century primary school (5,000m² and supporting 600 pupils) based on the London Borough of Barking & Dagenham's Employer's Requirements.



The new school building is to be formed by the refurbishment and extension of a previously derelict secondary school, originally built in 1936.

The design team have made great efforts to meet the client's brief to exceed the current Building Regulations requirements for reducing carbon emissions, and achieve a BREEAM rating of 'Excellent'.

All the existing building services are to be removed and new, low-carbon, high-efficiency systems are to be installed in their place.

The key elements of the design that help to reduce carbon emissions include natural ventilation throughout the school, low energy lighting with automatic energy saving controls, an automatic energy monitoring and controls system, upgrading the thermal insulation of the building to exceed current requirements, and the installation of on-site, renewable energy generation. A ground source heat pump, drawing heat from the earth below the school playing field, will provide around 80% of the annual heating requirement.

In addition, the ground source heat pump, a 35m² solar photovoltaic array will be located on the roof to generate electricity, with the capability to sell electricity back to the national grid. These two renewable technologies combined will offset over 17 tonnes of carbon dioxide each year that would otherwise be produced by burning fossil fuels or using grid supplied electricity.

ACHIEVING ACADEMIC EXCELLENCE

Since the start of our Framework Agreement with the **London Borough of Brent** in April 2008, Frankham has been appointed to carry out a number of projects.

Our most recent appointment, a proposal to rebuild two **Special Needs Schools** onto one site, has just got underway. Valued at an estimated **£18 million**, it encompasses the refurbishment of an existing pool and respite centre, with further consideration to incorporate a primary care unit. The range of disabilities are crucial to the design and something Frankham is accustomed to adhering to.

Also taken into consideration is the wider local community, whose use of the site is also essential to Brent. The school's current swimming pool is used extensively after school every day and at weekends by several different community groups. This commission will be carried out over two phases as the site will be operating as normal.

Other appointments for Brent include:

- Mount Stewart Children's Centre
- Wykeham Children's Centre
- Cricklewood Library Children's Centre
- Challenge House Children's Centre
- Barham Park Library Children's Centre
- Preston Park Children's Centre
- Wembley Youth and Community Centre; feasibility report
- Phase 3 Children's Centres
- Salisbury School Autistic Unit
- Ark Academy (details page 6)
- Harlesden Library
- Asset Management Plans; for a ten storey office block
- Chateris Sports Centre
- Brent Civic Centre; delivery of the new £40 million centre

We have received a number of commissions from another **West London Borough. Hounslow** have adopted the framework options of the **West London Alliance** and we will be working on the following:

- Brentford Fountain Leisure Centre, a £1.5 million phased project to modernise and refurbish a 1970s leisure centre over a 22 week contract period whilst minimising disruption and loss of income to the centre.
- Hounslow Leisure Centres and Community Halls, a £500,000 project to undertake essential roof repairs and renewals in occupied public halls and leisure centres across the Borough.
- Heston Pool and Community Halls, a £1.6 million programme of repairs, renewals and improvements.
- Feltham Airparks Leisure Centre, Isleworth Recreation Centre and the New Chiswick Pool - Capital Works – a £14.7 million project to refurbish, extend and enhance the facilities in three popular leisure centres simultaneously, whilst minimising disruption and loss of revenue.

FRANKHAM IN DEFENCE

Frankham Consultancy Group has extensive experience in working both directly for **Defence Estates** and its contractors, Serco, PriDE and Debut in London, the Midlands, the South East and overseas. As a multi-disciplinary practice we have been engaged on major capital projects, as well as many extension refurbishments and fit-outs across the defence estate.

SERCO

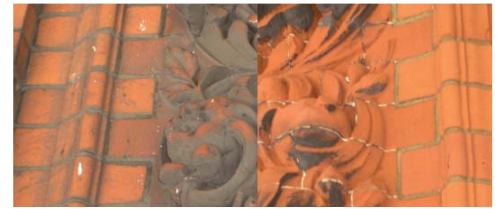
We have been providing multi-disciplinary services on a variety of projects at the International Defence Estate Academy in Shrivenham, Wiltshire, including recently the design of a new defence capability centre and internal remodelling and refurbishment works of the Slim Building.

PriDE

Frankham has undertaken a number of projects for PriDE, an Interserve/Southern Electric Contracting (SEC) joint venture who were awarded the Defence Estate Regional Prime Contract, covering London and the South East in early 2005. Recent projects include multi-disciplinary services at St. Georges Barracks, Bicester, and cost advice for the refurbishment of Barracks at RAF Halton.

DEBUT

We have undertaken a number of projects for Debut South West including schemes at both Yeovilton and Lyneham. Current projects include a £1.3 million vehicle repair workshop at Ashchurch, Gloucestershire.



UCLH EXTERNAL REFURBISHMENT

This project consists of the refurbishment of the existing building fabric, including façade cleaning, to 8-11 Queen Square (Sir Charles Symonds House), London WC1.

Queen Square, in the Bloomsbury District of the Borough of Camden, was originally constructed between 1716 and 1725. The building is a six storey, mid-terraced, brick structure under a natural slate, mansard roof. The front elevation is decorated with ornate brick and stone details to all levels.



Frankham is working on behalf of UCLH providing contract administration following an extensive condition survey of the building exterior elements. Specialist stone restorers have been employed to carry out detailed repairs to all levels, including two large lion heads at parapet level and two coats of arms on either side of the main entrance.





BIGGIN HILL LEISURE CENTRE

The new leisure facility will cost an estimated £4.4 million and will incorporate a modern library and a 6 lane, 25 metre swimming pool with changing facilities. With the demolition of the old library, Frankham attended the 'Turning of the Turf' ceremony at the grounds in Biggin Hill, Kent. The event was conducted by Councillor Denise Reddin, the Mayor of Bromley, accompanied by Mr Rodney Scrase DFC, a World War II Spitfire Pilot who served at Biggin Hill in 1942, and Flight Lieutenant Mike Ling a local pilot with the RAF Aerobatic Team.



Through a comprehensive feasibility study, Frankham identified the site of the Biggin Hill Library as the preferred location for a new community leisure facility. A detailed brief was established for a facility combining the swimming pool and public library to function as a single community facility serving the people of Biggin Hill.

The design of the facility has been carefully detailed to fit within its context and have minimal impact on neighbouring properties, while providing the council and Biggin Hill with a centre that will create a focus for public services in Biggin Hill to a high quality design.

Planning permission for the scheme was achieved in May 2008, with an anticipated opening of January 2010.

FRANKHAM'S REMEDY FOR RIDHAM

Ridham Dock was established during the First World War for loading ammunition, later for importing materials relating to newsprint. Now a variety of materials pass through the docks. Our client, **Robert Brett and Sons**, now own the east side of the Dock for the importing of stone.

Mindful of possible ground problems in the area, Robert Brett and Sons commissioned Frankham to carry out studies using the latest ground investigation techniques in order to comment on the deterioration of the London Clays sub soil.

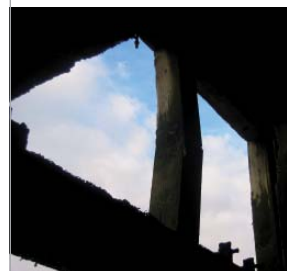
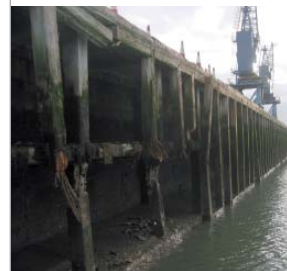
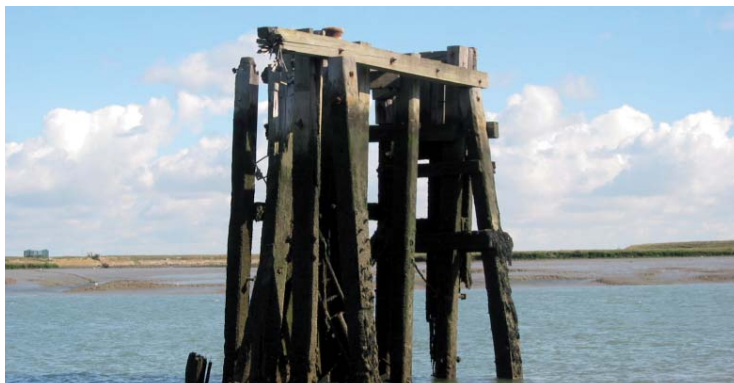
Frankham arranged five shell and auger boreholes, spaced at regular intervals behind the East Wall. The schedules fieldwork comprised of various sampling, including in-situ testing, as well as a period of tidal monitoring. Frankham has concluded that substantial remedial works are necessary to the East Wall to prevent a possible future failure, which could then result in major flooding and subsequent closure of an important dock system in North Kent.



The project has already begun and is due to be completed by February 2010.

Ridham Dock is within a sensitive environmental area and at present Frankham and Robert Brett and Sons are working closely with **Natural England** to protect wintering and breeding birds from being disturbed by the piling operations.

Due to the sensitivity of the wall at Ridham Dock, Frankham Surveyors were asked to monitor the east side dock wall and set up a high powered, high tech Total Station that monitors between +/- 3m on the wall. It is being analysed via a Geomos monitoring software. This is to detect the wall movements before sheet piling starts in May 2009.



MEET OUR HSEQ TEAM



With the recent internal restructure, we have created a new and effective team, headed by **Stuart Macmillan**. The team provides Health & Safety, CDM-Coordination, Environmental services and Quality Assurance services. They have already implemented a number of changes across the Group which are benefitting clients and staff alike.

Stuart Macmillan, *BSc (Hons), MICE, CEng, Dip EM, AIEMA*
Senior Associate – Head of Environmental Services
 Stuart took on the role of developing the Environmental Business for the Group, due to his enthusiasm for the Environment and his desire to make our designs as sustainable as possible. Stuart aims to integrate all our management systems to ensure the most efficient service.



Johanna Jarvinen, *MSc, BEng, AIEMA*
Senior Environmental Consultant
 Johanna has a number of years experience in this field and works to ensure the Environmental Management System is adhered to, assisting and developing our internal Quality Management System, she also deals with the majority of Phase 1 and Phase 2 Contamination survey reports, provides Impact Assessment and also advises clients in Environmental and Sustainability issues throughout all RIBA stages.

Stuart and Johanna are also both registered as **Code for Sustainable Homes Assessors** and **BREEAM Assessors** in various schemes.



Lesley Quinn, *MIOSH, MIRSM, IRCA, NEBOSH, PTS, LUL*
Senior Health & Safety Consultant
 Lesley was appointed as 'Competent Person' to the Frankham Group under the Management of Health & Safety at Work Regulations 1999. She has produced many Health & Safety procedures and protocols for rail, housing and London Underground. Lesley leads the Company's Health and Safety policy implementation and procedures and manages the Company's Link-Up accreditation. Lesley is currently pursuing the Group's accreditation to OHSAS 18001.



Steve Hickford, *MCIOB, MAPS, CDMc 2007, NEBOSH, BIOH P405*
Associate – CDM Coordinator
 Steve's role is managing a team of CDM-Coordinators, supporting multi-disciplinary teams and external consultants. Working closely with Lesley, he ensures our projects are administered correctly. He has over 30 years' experience as a building surveyor, primarily in the public sector, specialising in maintenance, refurbishment and improvement work.

Working with the **London Borough of Newham**, Steve has seen the successful completion of the new £1.2 million Renal Unit at **Bart's and the Royal London Hospital**. This was a major refurbishment project, with the unit in need of an update before becoming defunct.



Jo Neale
CDM Administrator



Becky Floyd
Health & Safety Administrator



GP WALK-IN CENTRE

A walk-in medical centre, based in Broad Street Mall, Reading, will treat more than 6,000 registered patients. Plans for the NHS doctor's surgery and walk-in centre which would employ 21 full time members of staff is expected to open later in 2009. The Centre will be open 365 days a year between 8am – 8pm and will cater for walk-in patients who live in Berkshire West's NHS area.

The 'under utilised' space was originally home to four retail outlets before being converted into one large store following Virgin's renovation a few years ago. The unit has a change of use from retail to a Health Centre. The surgery would have more than 20 staff including three GPs, three receptionists and ten nursing staff.

EDMUNDS LAST ORDERS

Keith Glennister, Director of Business Consultancy Services, has completed his role with Suffolk County Council and St. Edmundsbury Borough Council in helping them deliver the Bury St. Edmunds public service village when West Suffolk House was opened in March 2009.

This new facility cost approximately £30 million and has brought together a range of public sector services on one site, providing more cost effective services for the community. Some 600 staff from the two councils, are working together in the purpose-built building in Western Way. The two councils now share common facilities, giving both the benefit of cost savings resulting from more efficient space utilisation and more energy-efficient heating systems.

Keith, with his FM background, gave advice regarding maintenance scheduling, FM strategy and played a pivotal role within this innovative partnership to ensure that the new building was handed over within the agreed programme.



NOT JUST ANY OLD BRICK

Frankham was instructed by Richmond Housing Partnership to repair a boundary wall at the rear of a small block of flats in Barnes, SW13, and upon inspection it was discovered that the wall was actually, in places, three walls thick, with bushes growing out of the top and leaning badly.

The wall dates back to the early 18th Century and it has been suggested that the wall formed the boundary of a building used by the members of the Hellfire Club.

Although not listed by the Local Planning Authority, the Conservation Officer was keen that the character of the wall was maintained using hand-made bricks and lime mortar. Many of the bricks were perished and others missing.

Specifically the client did not want the wall to be taken down and rebuilt. A specification of repair was drafted and priced and a contractor appointed.

Notices were served under the Party Wall etc Act on the adjoining properties prior to commencing on site. The client had instructed that the wall was only to be repaired on their side as, under the Act, the neighbour's could have had to contribute to the costs.

Rebuilding sections of the structure to tie in with the existing wall meant that the bricklayer had to throw away his level and plumb bob.

The result is a fully repaired wall, built out of plumb and out of line which, under normal circumstances, would be condemned as unsatisfactory work.



#1 IN SAFETY

We are proud to announce that we have been achieving consistently high scores in the **Achilles Link-Up®**, which, is the UK rail industry supplier registration and qualification scheme.

This scheme is used extensively for procurement by engineering, safety and quality professionals, as well as organisations who need to comply with vast amounts of legislation set out by the European Union, amongst others.

The scheme has made a significant impact on the rail industry by providing a single common qualification process for suppliers; shared by Network Rail and other buying organisations, including principal contractors, rail and underground infrastructure companies, construction companies and train and freight operators.

Today, more than 3,000 suppliers are engaged with Link-Up and the Achilles rail portal is searched by over 100 buying organisations who can rely on Link-Up's fair, open and transparent process to meet their organisations' needs.

PLATFORM HUMPS EXTENSION



The Platform Humps at **Kings Cross Station** (to give level access to the Victoria Line trains) were installed at the end of May 2009. This is the latest phase of a project we have developed over the past five years, ensuring the platforms across the Victoria Line are DDA compliant.

The design was originally a removable system based on GRE to allow the risks to be quantified. These proved to be as low as feasibly possible and the solid permanent system was developed giving savings in cost, time and future maintenance.

Around 200 platforms will have these installed by 2012, ready for the Olympics.

LIFE 



Irene House, Five Arches Business Estate,
Maidstone Road, Sidcup, Kent, DA14 5AE
T:020 8309 7777
F:020 8309 7890

Wootton Business Park, Wootton,
Abingdon, Oxfordshire, OX13 6FD
T:01865 322 500
F:01865 327 393

Oakfield House, 35 Perrymount Road,
Haywards Heath, West Sussex, RH16 3BW
T:01444 444 900
F:01444 455 642

enquire@frankham.com
www.frankham.com

SHARE YOUR IDEAS

If you have any ideas to help us progress
please let us know, your views matter.



STOP PRESS PEOPLE

Steve Frankham was delighted to receive the **Ambassadors' Blue Riband** at the **London Excellence Awards Dinner** on 13th July 2009. Steve commented this recognition was for ten years of effort, support and contribution to excellence. Previous winners include: Capita, 3663 Foods, City & Guilds, AWE and O2.

Frankham has been successful in their bid to **Warwickshire Police Authority** and are now part of their multi-disciplinary framework. The news is further enhanced by winning a prestigious complete design of a new £4 million police station in **Coleshill** and assigned to a £1 million refurbishment of a task force station also within Warwickshire.

Frankham will be working with **Ealing Homes** on their **Decent Homes** project, coordinating works with contractor, Wates.

We are pleased to announce we have

been successful in our bid to carryout further installations of **Platform Humps** throughout the **London Underground**. This demonstrates our ability to complete work on time and within budget.

Following our tender submission and interview, **London Borough of Hounslow** are going to be recommending Frankham for the redevelopment of **Sandbank Older Persons Resource Centre** project (architectural services). The project will be let in stages and Stage one includes a feasibility study.

Acorn Care and Education has appointed the Environmental Team to undertake a formal **BREEAM Assessment** for the provision of new school buildings at the **Heath Farm School** in Charing Heath, Kent and the Health and Safety Team to undertake the **CDM Co-ordination** role for the demolition and new build phases.

Pro-Link Europe has more than 24 years experience in recruitment of staff.

By mirroring our parent company, we supply good quality people in a multi-disciplinary market. We don't stop there; we can also offer you help with HR Professionals, Secretarial, Administration and Accounts.

Promises are kept ... and we continue to keep them. The promise of providing an honest, open and ethical approach to recruitment has been our focus over the years. Delivering professional solutions to our clients and candidates remains our raison d'être.

To discuss your recruitment needs please contact either Pat Saville, Kaye O'Brien or Rei Coulibaly on:

020 8309 2700

or visit

www.prolink-europe.com