

SUMMER 2011

LIFE IS THE NEWSLETTER OF FRANKHAM CONSULTANCY GROUP

10

3

KEY PROJECTS



4

MODERN TECHNOLOGY



6

FULL GROUP SERVICES



9

CORPORATE SOCIAL RESPONSIBILITY

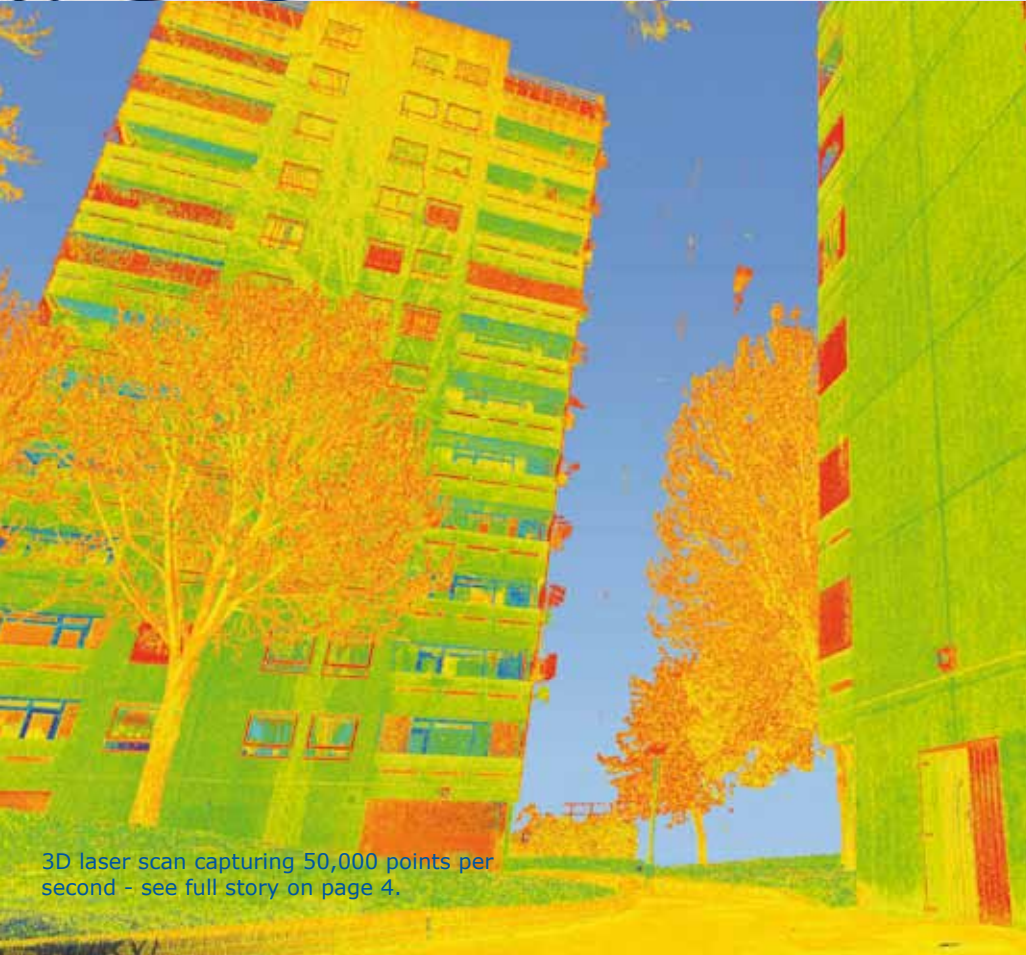


10

COMPANY NEWS



A WINDOW TO THE WORLD OF FRANKHAM



3D laser scan capturing 50,000 points per second - see full story on page 4.

PROJECT DIVERSITY
Frankham's breadth of work and clients

SPECIALIST SERVICES
Showcasing the Group's full services to the built environment

WORK SUCCESS
A winning first half of 2011



FRANKHAM



FRANKHAM

LIFE

STEVE FRANKHAM

Well, some things never change! We still can't win the Eurovision song contest, but changes in our industry are there for us to see. A reported 25% reduction in spend is a concern and growth figures are also nothing to get excited about.

We have decided to ban the word 'tough' in our organisation. We all know business life is challenging, whatever the state of our economy, but what is certain is that the world is different and we have to accept and adapt to a changing marketplace. In other words, we need to just get on with it and that's the attitude we have encouraged in our very diverse organisation.

Our Annual Report demonstrates our focus on maintaining financial stability. As an organisation, our balance sheet has strengthened, our gearing is still strong and our liquidity ratio remains positive. Hopefully this will be comforting to all our clients when considering whether to appoint us.

We have not stopped investing in our people and driving new initiatives, and recognition of this doesn't come any better than being awarded the Investors in People Silver award. This currently held by less than two percent of British companies that have been awarded iP.

We have continued with the goal of producing the next wave of professionals and it is very pleasing to announce that Andrew Williams is now a Member of the Chartered Institute of Building Services Engineers and Lara Dennison and Paul Marsh have both qualified as Chartered Surveyors. Our Environmental Team is also delighted to announce that both Laura Pearce and Johanna Jarvinen have passed their BREEAM AP (Accredited Professional) exam and can now offer formal BREEAM consultancy advice as well as assessment advice. Clare Jameson has also qualified as a BREEAM Education Assessor.

As many of you know, Chris Gibbs our Director of Engineering recently retired at the age of 56, lucky devil! Chris was with us for 15 years and played a major role in developing our Engineering division in many sectors. On behalf of us all, we wish Chris every happiness in his life - as wife Gill's personal decorator and gardener, good luck to them both. Chris' shoes have been filled by Alastair Smyth, who has been shadowing him for the last 12 months. We also wish him every success.

It would be remiss of me not to mention that Dave Pexton, our Group Manager of Maintenance Engineering, has completed 40 years as a Chartered Structural Engineer.

As a diverse company, we are always looking for new initiatives that can bring added value to our business and, more importantly, to our clients. In line with this, we have undertaken a joint venture with Blu-3 and formed a new company that will deal with the design and delivery of utilities in a different and innovative way (please read Alan Fletcher's article on page 8).

We have also been successful in winning more framework agreements: London Borough of Enfield lift consultancy, Estuary Housing employer's agents, London Borough of Harrow building surveying services, and Scape M&E Engineering Services. We have also secured further international work in Saudi Arabia and Denmark. Individual projects awarded in the UK include the next phase of Castle Mill student's accommodation for Oxford University.

In line with our Corporate Social Responsibility, it is especially satisfying to report that our recent May Ball at The Grosvenor House Hotel raised in excess of £65,000. This is a tremendous result that was only achieved by the hard work of our staff and the outstanding generosity of our friends, clients and supply chain. The good news is that every penny will go to the many worthwhile causes that we support.

So life goes on here at Frankham and we continue to be mindful of giving our clients a better than satisfactory service. In this respect, we always welcome feedback which can help us focus on your needs. As always, we thank our staff, supply chain and all of our clients for your continued support. Have a great Summer.



Steve Frankham
Chairman

LONDON BOROUGH OF ENFIELD

London Borough of Enfield has appointed Frankham as Lift Consultants. Vince Beattie, the Frankham Principal Lift Engineer, is based in the Council's Clavering Industrial Estate offices in Edmonton two days a week, from where he is the Contract Administrator on a Housing Portfolio of 120 lifts.

In this hands-on, role Vince will visit every lift at least twice throughout the working year and register the visit electronically on the Enfield shared drives. In the event of lift failure, the M&E team can immediately cross reference any issues with up-to-date reports on each lift.

As an added benefit, Vince is also completing a full asset plan with photographic evidence and summary sheets. This has been very well received and, as a result Frankham has been invited to tender for the design of all new lift installations over a five year period.

OXFORD OFFICES FOR THE FUTURE

Frankham is proudly displaying its signboard in the high profile location in the centre of Oxford now that scaffold has been erected outside the offices of Oxford City Council.



The first phase of refurbishment, which includes the basement and third floors, has been completed and handed over. Around 125 members of staff have decanted into their new space.

A programme of window replacement and the strip out of the other three floors is now under way to accommodate a further 320 employees and a Customer Services Outlet and 'Drop-In' Centre.



A NEW MODERN LIBRARY FOR ORPINGTON

The new Orpington Library opened to the public in May 2011. LB Bromley was keen to create a new modern library with community facilities in the heart of Orpington town centre. Frankham provided Project Management, Quantity Surveying, CDM-C, Architecture, Interior Design, M&E and Structural services for this project.

The project involved re-configuration and refurbishment of an existing three storey office building and re-cladding of the existing facade. The Library provides IT training, internet access, DVD/CD rental, self-service desks and community rooms called 'The Market Place' and 'The Pod'.

A key aspect of the project was to create a vibrant and exciting interior scheme. Frankham Interiors developed this with the client and it is now to be rolled out across all their library facilities.



LONDON BOROUGH OF BRENT: JOHN BILLAM RESOURCE CENTRE

London Borough of Brent's new, purpose built John Billam Resource Centre will provide day time activities to support people with learning disabilities and autism.

Frankham's building services engineers and low carbon Consultants worked closely with the client to develop the design incorporating all elements of the building services. We developed a high efficiency mechanical ventilation solution using occupancy sensors to ensure that ventilation is only provided to the occupied rooms, reducing energy consumption.

All of the units will also be fitted with Heat Recovery, to recycle heat from the exhaust air, that would otherwise have been wasted, pre-heating the fresh air supply.

A great deal of consideration was given to the lighting scheme. Using the most efficient lamps available not only reduced energy consumption but, due to their high output, reduced the overall number of fittings and realised a cost saving for the client. These fittings will be complemented by a system of daylight linked dimming and occupancy sensing.

A Solar Photovoltaic Array will save around 3.5 tonnes of carbon dioxide per year by generating electricity on site, equivalent to 10% of the building's annual carbon emissions.





FRANKHAM

LIFE

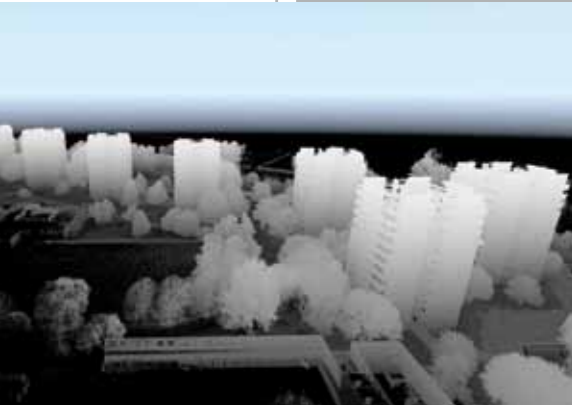
MODERN TECHNOLOGY ADDS VALUE IN THE COMMUNITY

Frankham has undertaken a 3D laser scan survey of Gallions Housing Association's Thamesmead site. Encompassing 19 twelve-story blocks of flats, the 3D laser scan survey covered all buildings, garage blocks, walkways and bridges, and also included key topographical features.

The survey of the 2.5 sq km area was completed within three weeks using Frankham's Leica ScanStation C10, which is capable of capturing survey information at a rate of 50,000 points per second, to millimetre accuracy. 3D laser scanning was chosen for two reasons:

- the completed data set, containing over 2 billion highly accurate survey points, was used to generate a series of computer animated 'walkthroughs' designed to form part of the consultancy with residents.
- subsequently, as part of the phased regeneration works, detailed topographical surveys and elevations of the existing tower blocks were required by the client's architects. These were extracted from the single data set generated from laser scanning. This ensures accuracy and consistency at all stages of the CAD process and negated costly returns to site to collect additional data.

Frankham is pleased to be involved in this regeneration project. With the use of modern technology to aid this process, we feel that this will ultimately add value to life in the community.



SERCO ASSET IMPROVEMENT

Following the successful completion of the 2010 and 2011 Asset Improvement Work projects at the Defence Academy at Shrivenham on behalf of Serco Defence Estates, Frankham has been appointed to provide the mechanical & electrical engineering services design for the 2012 Asset Improvement Works.

The commission involves the production of design documentation and technical support for the client to replace and upgrade existing fixed building services. This includes LPHW heating plant and equipment, air handling plant H&V controls and LV electrical systems to provide improved and more reliable installations.

The new systems will be implemented to improve system efficiencies and where possible, reduce carbon emissions throughout the site.



Farnham Depot

Frankham's Engineering Division was engaged by Osborne and Network Rail to investigate and propose a solution to progressive rail slab settlement within the existing train shed at Farnham Depot.

Frankham conducted topographical and geotechnical investigations to establish the failure mechanisms and it was proposed that a Polymer Injection System was utilised to lift the base slabs and provide a solid bearing strata to minimise future settlement.

This solution was seen as an excellent fit as it both kept the facility operational and reduced disruption which would have occurred by utilising a more traditional repair approach. The programme of repair was completed in five weeks during which the facility was kept fully operational.



MANSTON 'HOT HOUSE' FIRE TRAINING AID

Frankham has produced tender documentation for the refurbishment of the 'Hot House' Fire Training Aid at DFTDC Manston in Kent. The stand alone facility provides training for fire brigades and also fire officers in the private and military sectors operating in fire and smoke filled environments.

Our brief was to specify the cleaning of the building, strip out refractory tiles and insulation, replace the obsolete emergency ventilation system, external louvres, supply fan controls, renovate/clean the emergency low level lighting and provide additional external lighting.

Frankham surveyed the building using PPE as protection against the carcinogenic soot covering internal surfaces.

Frankham's specifications had to address highly specialised requirements. For example, when the fire training sessions are in progress heat and smoke cross the ground floor at high level at temperatures up to 500°C. The facility is internally insulated and tiled to prevent temperatures in excess of 250°C which would degrade the integrity of the concrete in the structure. The axial emergency extract fans are rated at 400°C for two hours.

HONEYWOOD MUSEUM

Honeywood Museum is a Grade II listed building, parts of which date back to the late 17th Century, and is situated overlooking Carshalton Ponds in Surrey. Sidcup office building surveyors and M&E engineers have been appointed by London Borough of Sutton to design the refurbishment of the building to a tight timescale. The works to be completed before Christmas in preparation for a re-opening in March 2012.



Schools projects

VILLAGE SCHOOL



The planning application for the new Village School, a 235 place Special Educational

Need School for London Borough of Brent, was unanimously granted approval in a Spring committee meeting.

This included difficult proposals for off-site decant accommodation which, long term, will provide legacy buildings for Kingsbury High School.

This is a welcome milestone for the whole Frankham multi-discipline team that has been working on the design since scheme inception two years ago.

Whilst the planning process has been ongoing, Frankham has completed detailed design to the end of Stage E.

DANESBURY NEUROLOGICAL CENTRE



Managed by the Hertfordshire Community NHS Trust, Danesbury provides respite care for those with neurological conditions and complex healthcare needs.

Occupancy and operational changes created a need for additional patient facilities and a new nurses station. On the basis of previous successful work with the Trust, Frankham was selected to design & manage the project.

Designed in close consultation with in-patient staff, Frankham's scheme makes more efficient use of space. High standards of infection control and energy use are achieved by specifying hygienic wall and floor finishes, sensor operated taps and PIR controlled, low energy lighting.

The 16 week phased scheme was undertaken within the existing occupied, in-patient hospital and completed with minimal disruption.

HILLINGDON SCHOOLS



Frankham architects in Oxford, in partnership with Leadbitter Construction, have been successful in winning the delivery of Basic Need Provision for six primary schools in London Borough of Hillingdon. The Borough is experiencing a large growth in the current population and there is a need to incorporate this additional influx of pupils and generally to increase their primary school capacity by a further form of entry.

Although there will be a phased delivery of this additional accommodation, the intense programme dictates that it should be in place by the beginning of the new school year in September. Each of the six projects have a value between £2-3 million.

RE-WIRING AT LAMBETH LIVING

Frankham has provided electrical services design and contract administration duties for the upgrade of landlord's electrical services, to seven multi-storey dwelling blocks.

The project involved the replacement of all electrical landlord's services, including lighting and power in the dwelling blocks.

The Frankham team had two weeks to complete a full set of tender specifications and drawings for blocks. All the projects were completed on time and within budget.

SOUTH EAST AMBULANCE SERVICE NHS FOUNDATION TRUST

Frankham's Haywards Heath building surveyors have been appointed to act as lead consultant for the installation of new above ground fuel tanks, pumps and integrated fuel management systems at fifteen sites in Kent, Sussex and Surrey.

As part of the overall Government contingency plan all emergency services are to increase fuel storage capacity to provide some resilience in the event of major disruption to the fuel supply network. Part of the Trust's business continuity plan is to increase capacity by installing above ground storage tanks in strategic locations throughout the Trust's operational area, both at ambulance stations and Make Ready Depots.

The project also requires Frankham to provide CDM-C, Electrical Engineering, Structural Engineering and Environmental Consultancy. Works are due to commence on site in Summer 2011.



FRANKHAM

LIFE

LANGLEY PARK SCHOOL TOPPING OUT CEREMONY

Members of the Frankham design team have attended the 'topping out' ceremony at Langley Park School for Boys in London Borough of Bromley. Councillor Ernest Noad carried out the ceremonial honours to celebrate the completion of the highest point of the structure.

This was carried out from a scaffold at the front of the Performance Hall, 13 meters above the ground, and completed the enclosure of what was agreed by all as a fantastic space and resource for the school. The remaining construction of this £32 million replacement secondary school is well advanced with internal finishes already being completed to the teaching and learning 'hubs'. The school is watching the construction in eager anticipation of their move later on this year.



FRANKHAM

LIFE

SUMMER 2011

FRANKHAM CONSULTANCY: PROVIDING FULL SERVICES TO THE BUILT ENVIRONMENT.



FRANKHAM

LIFE

Many organisations know Frankham from its heritage as a design, surveying and project management consultancy but the company is continually developing and has, for some time, provided a full range of design and consultancy services to the built environment.

Our services

Design Consultancy

Architecture
Interior Design
Mechanical & Electrical Engineering
Lift Engineering
Structural & Civil Engineering
Maritime & Industrial Engineering
Master Planning
CDM Coordination

Surveying & Project Management

Building Surveying
Cost Consultancy
Project Management
Employer's Agent
Topographical Surveying
Measured Building & Laser Scanning

Environmental Consultancy

Environmental Engineering
Sustainability Consultancy
BREEAM & CfSH Assessment
Low Carbon Consultancy

Risk Management

Health & Safety Consultancy
Fire Management
Asbestos Management
Compliance Management
Water Management

Business Specialists

Business Consultancy
Development Consultancy
Strategic Risk Management
Recruitment
Technical Auditing
Business Continuity Management

Other Group companies



BUSINESS CONSULTANCY: SIX YEARS ON



Much has happened since the Autumn of 2005 when staff in our Business Consultancy team started working on a commission at Suffolk County Council. Since then, the team has undertaken a variety of work, initially for public sector clients and subsequently for the private sector. Currently there are seven people working in the team.

Alan Fletcher, Group Manager, recalls a wide range of work undertaken for housing associations, local authorities, various contractors and some away from construction including accountants and communication providers. Whilst facilities management and related estates tasks was the original core business, Frankham business consultancy now helps organisations cope with change whilst improving processes and performance. This includes projects in estate management, leadership/ iip/ human resources and marketing support & presentation skills.

The thing that remains constant is the focus on our clients' needs, delivering innovative solutions and the flexible approach of the team. Also constant is the presence of Alan Fletcher and Rex Pengilly who have both been working in the Business Consultancy team since the beginning.

UNITED RESIDENTS HOUSING – COMPLIANCE SERVICES

Frankham Risk Management Services (FRMS) has been appointed to assist in strategic compliance works with United Residents Housing.

FRMS was approached in order to provide the complete 'suite' of compliance based services. Works involved life-risk areas including asbestos surveying, fire risk assessment (incorporating simplified access audits), legionella testing, health and safety surveys and electrical testing.

Works were carried out throughout the communal areas of the portfolio within a very demanding timescale. In general terms, we reviewed and re-wrote existing policies and procedures, carried out surveys where a need was identified and stored the information derived from the surveys on our bespoke 'risk portal'.

The result of these extensive compliance services has not only been better adherence to compliance, safety regulations and guidance but also a glowing report from the Audit Commission, helping URH achieve a two star rating with promising prospects for improvement.

For more information on how FRMS can assist with any health and safety or compliance issue, please contact **Tom Byers on 020 8309 2720 or email: tom.byers@frankham-rms.com**

BREEAM CHANGES

FROM 1ST JULY 2011 BREEAM 2008 HAS BEEN REPLACED BY BREEAM 2011 NEW CONSTRUCTION.

BREEAM 2011 covers the same non-domestic building types as BREEAM 2008. However, the criteria and benchmarking are now specific to new buildings only. BREEAM 2011 consists of a single, consolidated scheme document containing all 'new construction' assessment issues and criteria relevant to the range of non-domestic building types assessed using BREEAM in the UK. This makes the scheme more flexible for use on mixed use buildings and aids clarity and consistency in the implementation of the method. This will also provide a single point of reference regarding BREEAM's application to quantifying, reporting and rating the environmental impact of new buildings.



BRE Global is also developing a new BREEAM Refurbishment scheme due to launch in 2012. In the meantime, BREEAM 2008 can continue to be applied to fit-outs and refurbishments, or major refurbishments can be assessed against BREEAM 2011. Revised procedures for the assessment of small buildings with a simple services strategy are also being developed.

If you are involved in a development requiring BREEAM or have any queries regarding the new scheme, please contact either Johanna Jarvinen or Laura Pearce on 020 8309 7777.

SWAN HOUSING

Swan Housing Group operates predominantly in the South East of England and expects to develop in the region of 2,000 – 3,000 homes over the next four years. Frankham has been selected to join Swan Housing Association's Framework Agreement for

- Asbestos Surveying
- Fire Risk Assessments
- Topographical Surveying

As well as providing support on projects, it is our responsibility to inform on legislative and asset management issues. We will be responsible for contributing to client key performance indicators and continuous improvement and knowledge dissemination activities.



frankhamprojects

Frankham Projects has been commissioned by Amicus Horizon to review five of their existing sites with a view to maximising land value prior to disposal through the planning process.

The intention is to use the cross subsidy from the sale of three of the sites, with the benefit of planning consent, to reduce the reliance on HCA grants in the development of the remaining two schemes for affordable housing.

The five sites, all part of a transfer of surplus land from Hastings Borough Council, are located in and around the coastal towns of Hastings and St Leonards in Kent and will provide new homes across the Borough, when completed.

This expertise is a niche service from Frankham Projects which is able to provide development and design advice to ensure maximum value is achieved in a timely manner. The end result will be the delivery of 39 units of much needed 'affordable accommodation' in Hastings.





FRANKHAM

LIFE

FRANKHAM CONNECTS INTO UTILITIES



Frankham and Blu-3 (UK) Limited have launched a new venture, Energise Infrastructure Limited.

Energise recognises that utilities provision is a critical element in construction delivery and one that can negatively impact the programme. Energise realises that delays to programmes not only result in cost issues but, more importantly, can cause irretrievable damage to the reputation of the developer or contractor.

By offering a holistic and focused approach, preferably before any acquisition of land and during the site search stage, Energise can ensure total commitment to the delivery of all utilities from early consultation, control and through to construction.

It can be problematical in contacting utilities organisations often speaking with different people each time you call. Energise will undertake all liaison and interface with the statutory bodies and stakeholders to ensure controlled delivery.

On announcing the new venture, Steve Frankham said "Energise will employ good value engineering processes and it will work in tandem with Frankham's design teams to enhance the services that Frankham provides."

Senior people from Blu 3 are working closely with key personnel at Frankham to ensure that communication is effective and that there is seamless delivery through the consult, control and delivery stages.

For further information, please contact alan.fletcher@energise-infrastructure.co.uk



SUPPLY CHAIN AUDITS

Frankham's cost consultants have formalised a supply chain service developed over a number of years that has successfully improved delivery for a variety of clients including major PLCs, international organisations and local authorities.

The team undertakes an independent external review and audit to identify any operational issues, areas of concern and, more importantly, suggestions for improvement. Clients benefit in the following ways:

- ensure both internal and external project managers and consultants are following a consistent procedure and reporting process
- provide an understanding of whether your key performance indicators are proving to be measurable
- clarify operational issues and concerns so that steps can be taken to improve efficiency and performance
- ensure that projects and consultants are performing in terms of management performance, probity, statutory requirements, breaches of contract and fraud.

The outcome of our involvement is that our clients improve project delivery and project control. For more information, contact **Ian Webb 020 8309 7777 email: ian.webb@frankham.com**

LAUNCHING OUR NEW PRO-LINK WEBSITE



Further to LIFE magazine's recent interview with Pat Saville, Director of Pro-Link Europe, we are pleased to announce that the new Pro-Link Europe website was launched in April.

The introduction of our new site will increase the number of candidates and develop our client relationships and ensure that our services are fully accessible.

Pro-Link Europe understands the expectations of clients and candidates. Detailed information on their services can be found at www.prolink-europe.com

DENNIS WISE IN THE COMMUNITY... CELEBRATING MAY DAY IN STYLE

Our first fundraising May Ball was held on the 21st May 2011 at The Grosvenor House Hotel, Park Lane, London and was hosted by Bobby Davro who is one of the UK's funniest and best-known celebrity comedians.

The evening started with a very energetic display from the Pussycat Poles, a fitness led pole dancing school based in Kent. Also appearing on the night was new solo singer Elena D. Another first for the evening was of new band, The Colour Movement. Speedy Disco took us through to the early hours.

Through the generosity of those attending on the night we raised approximately £60,000 with further donations of £4,500 being received after the event. It must be said that, without the support of the many people who generously donate auction and raffle prizes each year, the people who purchase tables and those who advertise, we would not be able to continue to support the worthy causes that we do.

Our total fundraising to date is over £600,000. which is distributed to the many causes that Dennis Wise in the Community supports. As you may be aware, Dennis Wise in the Community was formed in 2000 by Steve Frankham and Dennis Wise with the aim of providing much needed support to their local communities. Listed below are some of the organisations for whom we have been proud to raise funds for on a regular basis.

**Parkwood Hall School
Threshers Day Nursery
Demelza House**

**Marlborough School
Northlands Multiple Sclerosis Society
Chalfont St Peters Football Club**

Bromley Autistic Trust

Frankham will be organising a Fundraising Lunch which is being held on 4th November 2011 at Oakley House in Bromley. If you would like further information, please do not hesitate to contact **Pat Saville on 020 8309 7777.**

HAYWARDS HEATH BIKE RIDE



Ben Turner from our Haywards Heath office took part in the annual Burgess Hill Bike Ride. The ride was in aid of a local Hospice and attracted over 800 participants

undertaking either 10 mile, 20 mile or 40 mile routes around the Burgess Hill and Haywards Heath area.

This was Ben's third year as a participant - he again did 20 miles but he has promised to attempt 40 miles next year. It was Alan Ranger's 12th year as an organiser but it was the Frankham van's first year as the sweeper vehicle. We think the van enjoyed it!

St Lucia disaster update:

The staff at Frankham generously donated boxes full of clothes, toiletries, baby supplies and foodstuffs for the St Lucia Appeal, all of which was shipped over in December 2010.



One of our staff members, Allende Dupal who originates from St Lucia and still has family in the country, raised the issue when the country was sadly hit by Hurricane Thomas in November. A number of people sadly died and several communities across the island became cut off.

We hope our donations made that tiny bit of difference to the lives of some of the families affected.

MOONWALK:

Jo Silley from our Bid Team took part in this year's 13 mile Moonwalk fundraiser for Breast Cancer. 15,000 people took part, walking the streets of London in their 'Walk the Walk' decorated bras.

It was a cold night but, with the help of fellow walkers and the great atmosphere, Jo and her team managed to get to the finish line!

Due to a recent family experience, the team pulled out all the stops to bring in the cash and managed to raise nearly £2,500 for this very worthy charity.

FRANKIE FRANKHAM...

...going from strength to strength

You may recall in our previous edition of LIFE we that we reported on a pony that Frankham have rescued and rehabilitated. We are pleased to report that little Frankie is well on the way to becoming a top child's pony and is getting lots of mileage under his belt. With the help of some young riders, he is learning to jump and regularly joins in with the Pony Club Games team training.

Ponies and horses have been known to be a great source of therapy and we would like to give children with disabilities the chance to come and interact with Frankie. He is currently stabled in Leybourne, Kent. If you would be interested in visiting him please email: **becky.bosman@frankham.com**



FRANKHAM

LIFE



WORK SUCCESS

Frankham has had a successful first half of 2011 for securing new business. We have been awarded numerous individual projects across our diverse business range and continue to be successful in open tenders.

In Education, we are undertaking feasibility studies for Surrey County Council's The Orchard School and West Berkshire District Council's Hungerford Nursery School Centre, as well as topographical surveys for Kent County Council. In Housing, Frankham has been appointed to the Employer's Agent framework for Estuary Housing, is providing building surveying services to London Borough of Harrow and is undertaking stock surveys for Devon and Cornwall Housing Association.

Our mechanical & electrical team is working with London Borough of Southwark's Climate Change & Sustainability team in identifying and installing energy efficiency measures to administrative buildings and education buildings, and has been appointed to Scape's collaborative building services framework. We are also providing Building and M&E surveys for a client's project in Saudi Arabia.

In Transport, Frankham has successfully delivered inspections at over 30 underground stations using a ground breaking electronic data capture system. We are supplying contractor, SISK with civil & structural, architectural and mechanical & electrical engineering services under the NSIP programme to provide better passenger facilities at Tonbridge Station. Our Engineering team is providing design consultancy services for a new workshop at London Midland's Stourbridge depot.

CRICKET MATCH

B & M McHUGH vs FRANKHAM CONSULTANCY GROUP

In June, Frankham's engineering and land surveying divisions enjoyed a cricket match at B & M McHugh's office in New Eltham.

The cricket match was very light hearted as not many of the teams members had played cricket before. Everybody had an enjoyable time and medals were presented to the losers (Frankham) and trophies were handed out to the winning team (B & M). Also there were trophies for the Worst Bowler (Verrol Jones, B & M), Worst Fielder (Ian Castle, Frankham) and Worst Batsman (Marcel McClarnon, B & M).

We would like to thank B & M McHugh for their hospitality and look forward to a re-match later in the year.



ALASTAIR SMYTH Director of Engineering



Alastair Smyth is Frankham's new Director of Engineering. The engineering division has four teams that incorporate transport, rail, structural, civil and maritime.

1) Chris Gibbs played a major part in establishing Frankham's engineering division. What are your plans going forward?

My intentions are based largely around team development and growth. I am continuing to expand our client base and market sectors which is seeing a big push into the commercial sector and pursuing overseas opportunities. I am also reshaping our business to provide our clients with the best service and to be flexible enough to suit future growth plans.

2) What would you like to see being done in schools to promote engineering as a career?

Interestingly, my career advisor at school told me that I shouldn't go into the engineering profession as it was a dead end job and I would never get anywhere! I think the industry has a big part to play in this, we must take responsibility for promoting engineering as a well respected and rewarding career. What a lot of people don't realise is that there is a massive skills gap in the industry even though we are in a severe downturn. As Engineers we constantly complain about the perception of our industry but, as far as I am concerned, it is up to us to change that.

3) You've been at Frankham for a year now - how have you found it?

It's been both rewarding and challenging. Filling Chris's size 10s has been interesting but there is a great diversity and ambition about the business that both excites me and suits my aspirations.

4) Porsche or Ferrari and what colour?

Porsche every time. A 997 GT3 RS in white, please.

5) What are your guilty pleasures?

I collect vinyl and have been known to do a bit of DJing in my spare time!

6) What is the best advice you have ever been given?

Life is too short to sweat about the small things.

NEW STARTER



We welcome David Tennant as Manager of CDM and Health & Safety.

TRACEY MARDELL Health & Safety Administrator



Tracey Mardell has been with Frankham for a number of years in an Office Assistant role. For the next few months she is providing maternity cover for the Health & Safety team - a very different challenge!

1) You are providing maternity cover in Health & Safety as team administrator, how are you finding the new role?

On the first day without Becky I was a bit nervous but, once I got going, I was fine. There is a lot to learn and a lot to remember within this role but I am enjoying it so far.

2) If you were only allowed one piece of equipment on site, what would it be and why?

A first aid kit as you never know what can happen or what situation may occur.

3) You're well practiced in 'phoning residents to make appointments for surveyors to visit - how different are you finding 'phoning clients to book H&S training?

It didn't feel much different! When you've done a lot of 'phoning around like I have, you get used to talking to different types of people.

4) If you could be someone else for the day who would it be?

If I could be someone else for the day I'd be the Queen, not only to have a glimpse of Royal life but try and make our country a little bit better.

5) What's the best holiday you've been on?

Three years ago, my partner and I went to Cape Town, South Africa, to visit my family and he took me to Table Mountain and proposed to me. We went back to Cape Town in January, this year, and it's always nice to visit Table Mountain every time we go out there as it's such a lovely memory to keep alive and not one that I will be forgetting any time soon.

6) Blackberry or iPhone and why?

I'd prefer to have a Blackberry (not that I have one) because it doesn't have as many problems as the iPhone. Also think the iPhone is overrated, especially in terms of the cost if you don't have a contract.



THOUGHTS ON BOB BROOKS

Sadly, our engineering colleague, Bob Brooks, passed away in May after retiring in September 2008. Here, Dave Pexton gives a tribute.

I first met Bob back in the early 1970s. At the time, Bob was writing programmes using first principles from the Theory of Structures to help us engineers. It was clear to all that Bob was indeed a very capable and extremely intelligent engineer. He was certainly a character and usually a bit dishevelled.

Lunch times were spent playing cards, Solitaire and we had some good laughs.

We went our separate ways but our paths crossed again nine years ago when Bob joined us at Frankham. Bob hadn't changed much, still a bit rotund and just as dishevelled but, more to the point, still a very capable and intelligent engineer. He struck up numerous relationships with clients, gaining repeat business and new work, he drove our secretaries often to despair with his reports sent in for typing, but that was Bob.

God Bless Bob.

Dave.



EALING KPIs - top again...

The good work for Ealing Homes continues. Working with our service provider partner, Wates Living Space, and the client's own pro-active and supportive staff, this tri-partite partnering team has again come out top of the monthly KPI's figures.

The Ealing Homes Decent Homes programme is soon to draw to a close and the Frankham team is pleased to have been involved in helping the client's major works team hit their target commitments in terms of quality, time and price.

QUALIFICATIONS

Frankham is pleased to announce that:

Congratulations are due to **Paul Marsh** and **Lara Dennison** for achieving their memberships of the Royal Institution of Chartered Surveyors.

Both **Johanna Jarvinen** and **Laura Pearce** have been successful in their recent BREEAM AP (Accredited Professional) exam. We can now offer formal BREEAM Consultancy advice (as opposed to Assessment advice) and the BREEAM Assessment rating will automatically get an extra credit for the use of an AP on the scheme.

Congratulations to **Clare Jameson** on qualifying as a BREEAM Education Assessor.

Andrew Williams, Head of Mechanical & Electrical Engineering at the Oxford office has recently gained full membership of CIBSE and is now recognised as a Chartered Engineer.



**Sidcup (Head Office)**

Irene House
Five Arches Business Park
Maidstone Road
Sidcup
Kent DA14 5AE

T **020 8309 7777**
F **020 8309 7890**

Oxford

Wootton Business Park
Wootton
Abingdon
Oxfordshire OX13 6FD

T **01865 322 500**
F **01865 327 393**

Haywards Heath

21 Perrymount Road
Haywards Heath
RH16 3TP

T **01444 444 900**
F **01444 455 642**

Central London

Gresham House
24 Holborn Viaduct
London EC1A 2BN

T **020 7651 0790**
F **020 7248 3144**

enquire@frankham.com
www.frankham.com



INVESTORS IN PEOPLE SILVER AWARD

Frankham has worked hard at introducing policies that protect our business and has an open door management style. Steve Frankham's goal has continually been to promote a caring and family culture and a 'Team Frankham' attitude. We have always listened to staff feedback and to try to make changes.

So it was very exciting this Spring when Frankham excelled itself by being recognised by Investor in People with the Silver Standard for our committed achievements to IiP.

This is tremendous news because only TWO PERCENT of British companies with IiP have achieved this award, and we are very proud of this milestone. As we all know, the only way is up so Gold is now our goal!



SHARE YOUR IDEAS

Frankham is fully committed to customer service and we continue to regularly monitor feedback from our clients through Frankham Direct.

frankham.direct@frankham.com

This email address allows you to contact Frankham's Executive Board directly, and encourages positive feedback and suggestions for future improvements.

"Feedback is the food of champions"



FRANKHAM